



The United States Chess Federation



- [Press](#)
- [Advertising](#)
- [Contact](#)
- [Join/Renew](#)
- [Shop](#)

[USCF Home](#) [Chess Life Online](#) [2008](#) [November](#) [Dallas Stomps Belgrade in Intercollegiate Match](#)

[Dallas Stomps Belgrade in Intercollegiate Match](#)

November 3, 2008

The University of Texas at Dallas (UTD) defeated University of Belgrade by a wide margin in an intercollegiate match on October 31. Chess program director James Stallings said "When all the mouse clicks had stopped, Ramirez held the Transatlantic Cup high in the air as the UT Dallas chess team was proclaimed the winner by the almost unbelievable score of 12.5 - 3.5!" Read more details in [an on the UTD website](#). Stallings told CLO the team was honored by a special guest on the Belgrade side. "Who played 1. d4 for Belgrade on Board 1? It was none other than living legend GM Svetzovar Gligoric!"

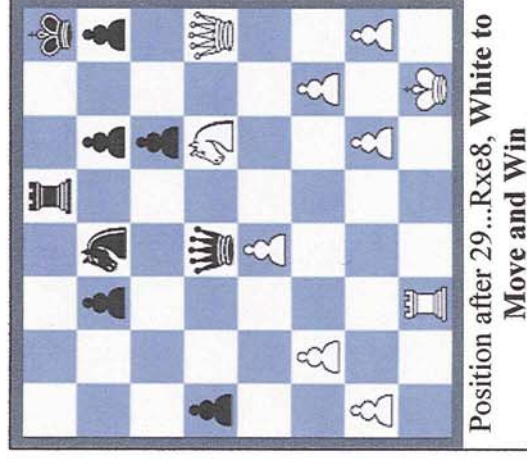
Although the players' Halloween costumes all seemed to be "strong chessplayer", UTD cheerleaders added a unique spirit to the event.



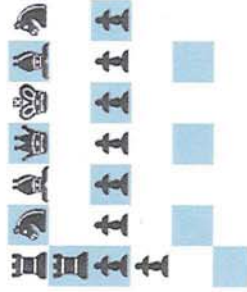
UTD cheerleaders with coach IM Rade Milovanovic

The extra support couldn't have hurt. Here is a puzzle and the wins from boards one and two of the UTD landslide.

How did IM Salvijus Bercys, playing White wrap up in the position below, from his game on board eight against WIM Marija Rakic?

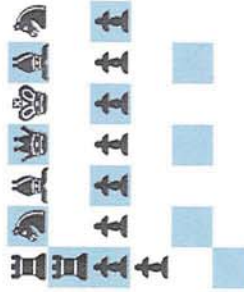


[Show Solution](#)

**2008 Intercollegiate****Belgrade**

White: IM Milos I
Black: GM Alejan

1.d4 d5 2.c4 c6 3.Nf3
 6.Qxf3 e6 7.Nc3 Nf6
 10.a3 Bg5 11.b4 Bc4
 14.a4 Bb8 15.a5 Rf8
 18.exd5 exd4 19.B

**2008 Intercollegiate****Belgrade**

White: IM Davori
Black: IM Nikola

1.d4 Nf6 2.c4 e6 3.Nf3
 5.dxc5 Qc7 6.Nf3 I
 9.Bg2 Nc6 10.O-O
 12.Bc1 Be6 13.Nd5
 15.e4 Ob6 16.a3 O

The rest of the games are on the Internet Chess Club. Access them by typing "liblist UTDUB." Read the CLO Preview for fun photos from last year and find out more about the universities and the 16-board lineups by [downloading the official match program.](#) (pdf)

Be first to write a comment on this Article
 (USCF Members-only)



November - Chess Life Online 2008

Gata Speaks on Topalov Match
 Larry Kaufman World Senior Champion!
 Ehlvest Wins Continental and World Cup
 Spot Larry in Clear Lead at World Senior
 Open Letter on Topalov Kamsky from USCF
 Ehlvest pulls away at the Continental
 Action Set for Brownsville
 New Jersey Knocked Out
 Larry Kaufman Tied for Lead at World Senior
 Four GMs Lead Four Rounds into the Continental
 Dallas Stomps Belgrade in Intercollegiate
 Match
 IM Kaufman Reports from the World Senior

Archives

1. [Chess Life Magazine](#)
2. [Chess Life Online](#)
 1. [2008](#)
 1. [January](#)
 2. [February](#)
 3. [March](#)
 4. [April](#)
 5. [May](#)
 6. [June](#)
 7. [July](#)
 8. [August](#)
 9. [September](#)
 10. [October](#)
 11. [November](#)
 2. [2007](#)
 3. [2006](#)