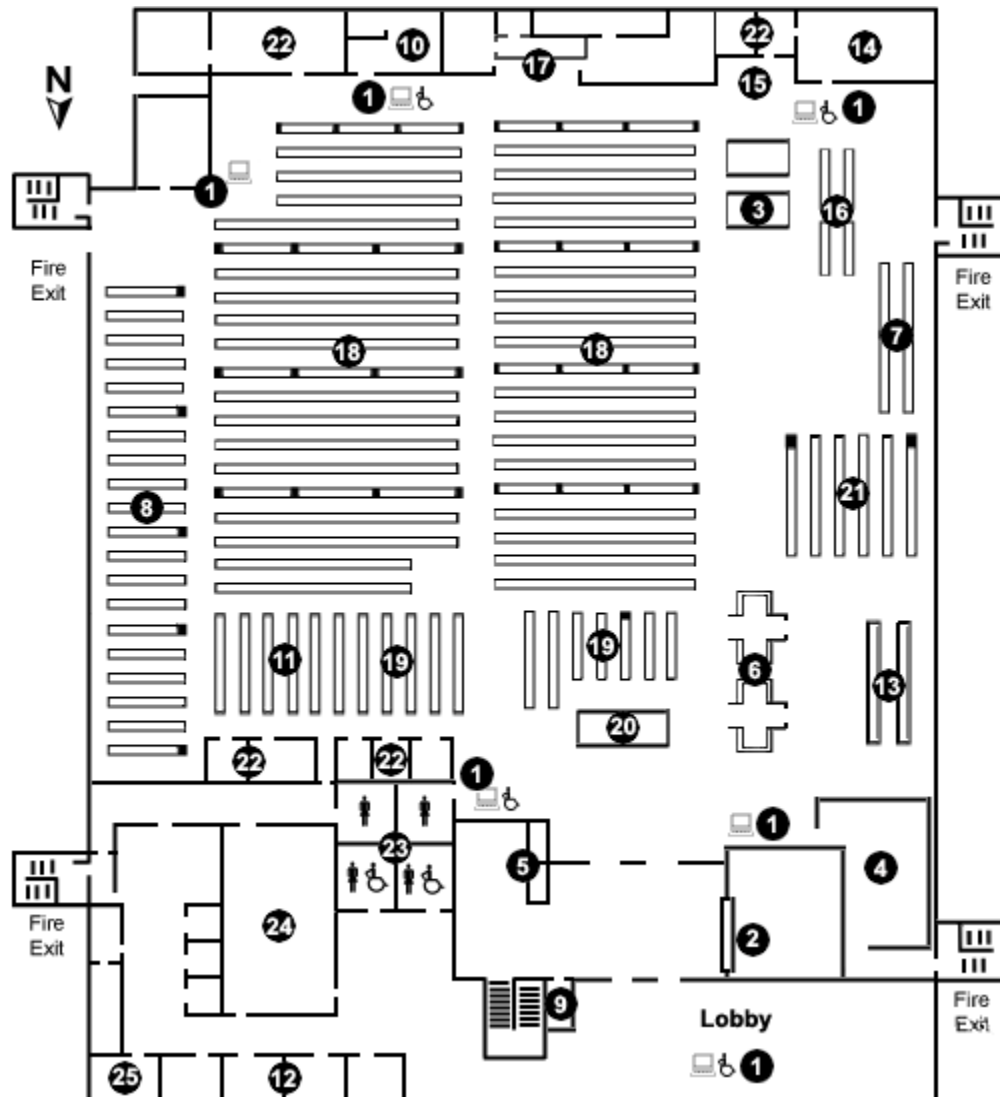


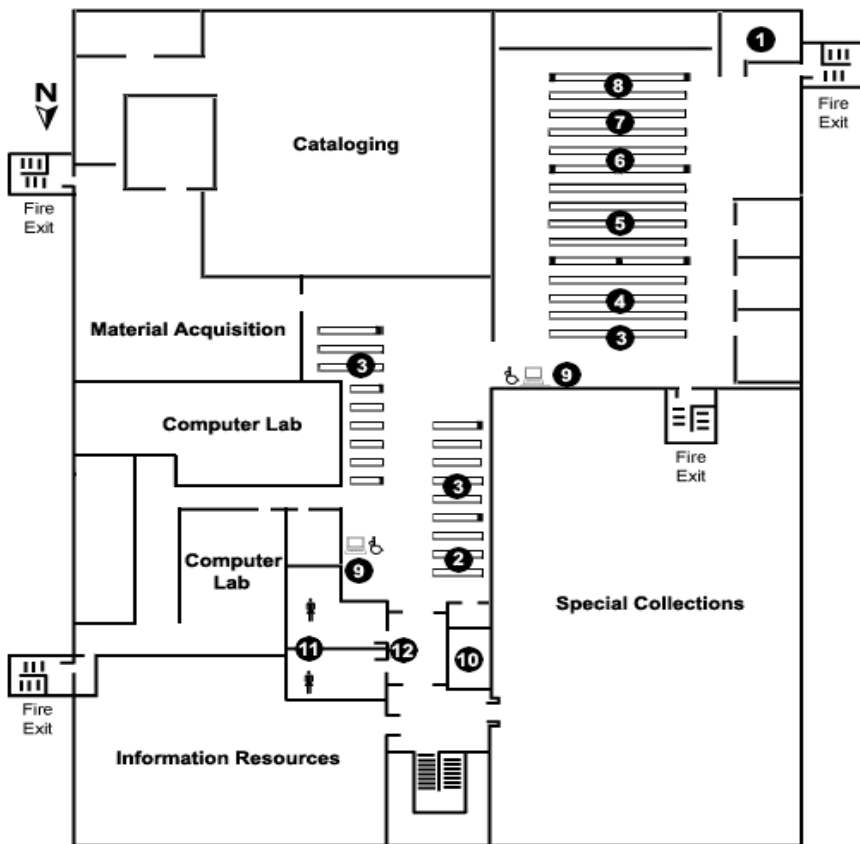


Second Floor Map



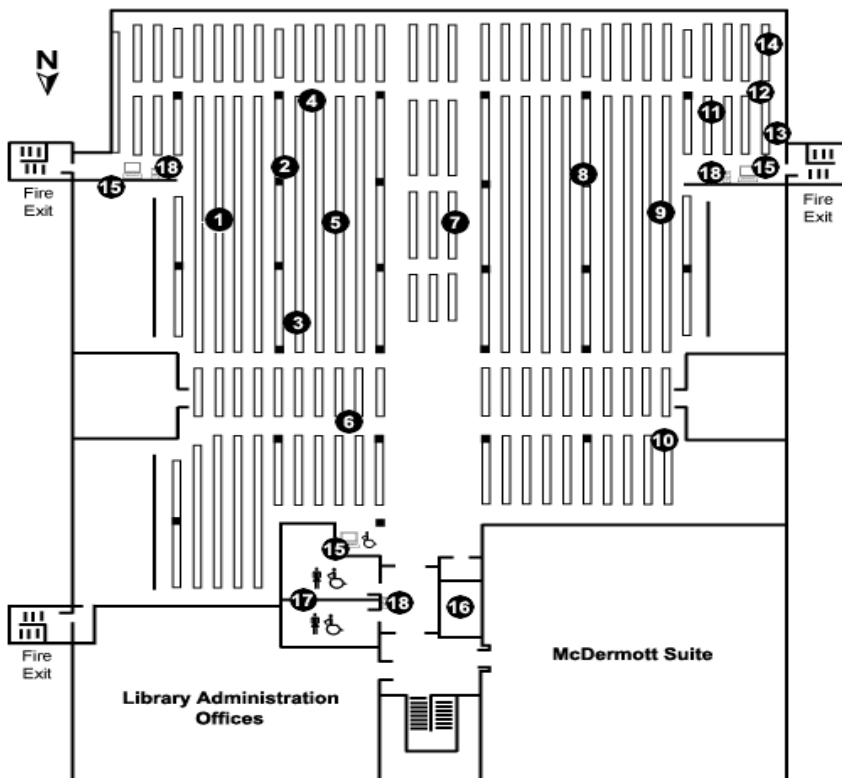
- | | |
|----------------------------|----------------------------|
| 1 - Catalog/Terminals | 14 - MC 2.524 |
| 2 - Circulation/Reserve | 15 - Maps |
| 3 - CDs and Water Fountain | 16 - Microform Area |
| 4 - Copy Center | 17 - Multimedia Services |
| 5 - Elevators | 18 - Periodicals |
| 6 - Information Commons | 19 - Reference |
| 7 - ERIC Microfiche | 20 - Reference Desk |
| 8 - Government Docs | 21 - Reference Indexes |
| 9 - Information Desk | 22 - Reference Offices |
| 10 - Interlibrary Loan | 23 - Restrooms |
| 11 - Law | 24 - MC 2.410 (Auditorium) |
| 12 - Learning Resources | 25 - MC 2.412 (Math Lab) |
| 13 - Leisure Reading | |

Third Floor Map



- 1 - Library Technical Support
- 2 - Call Number A
- 3 - Call Number B
- 4 - Call Number C
- 5 - Call Number D
- 6 - Call Number E
- 7 - Call Number F
- 8 - Call Number G
- 9 - Catalog/Terminals
- 10 - Elevators
- 11 - Restrooms
- 12 - Water Fountains

Fourth Floor Map



- 1 - Call Number H
- 2 - Call Number J
- 3 - Call Number K
- 4 - Call Number L
- 5 - Call Number M
- 6 - Call Number N
- 7 - Call Number P
- 8 - Call Number Q
- 9 - Call Number R
- 10 - Call Number S
- 11 - Call Number T
- 12 - Call Number U
- 13 - Call Number V
- 14 - Call Number Z
- 15 - Catalog/Terminals
- 16 - Elevators
- 17 - Restrooms
- 18 - Water Fountains