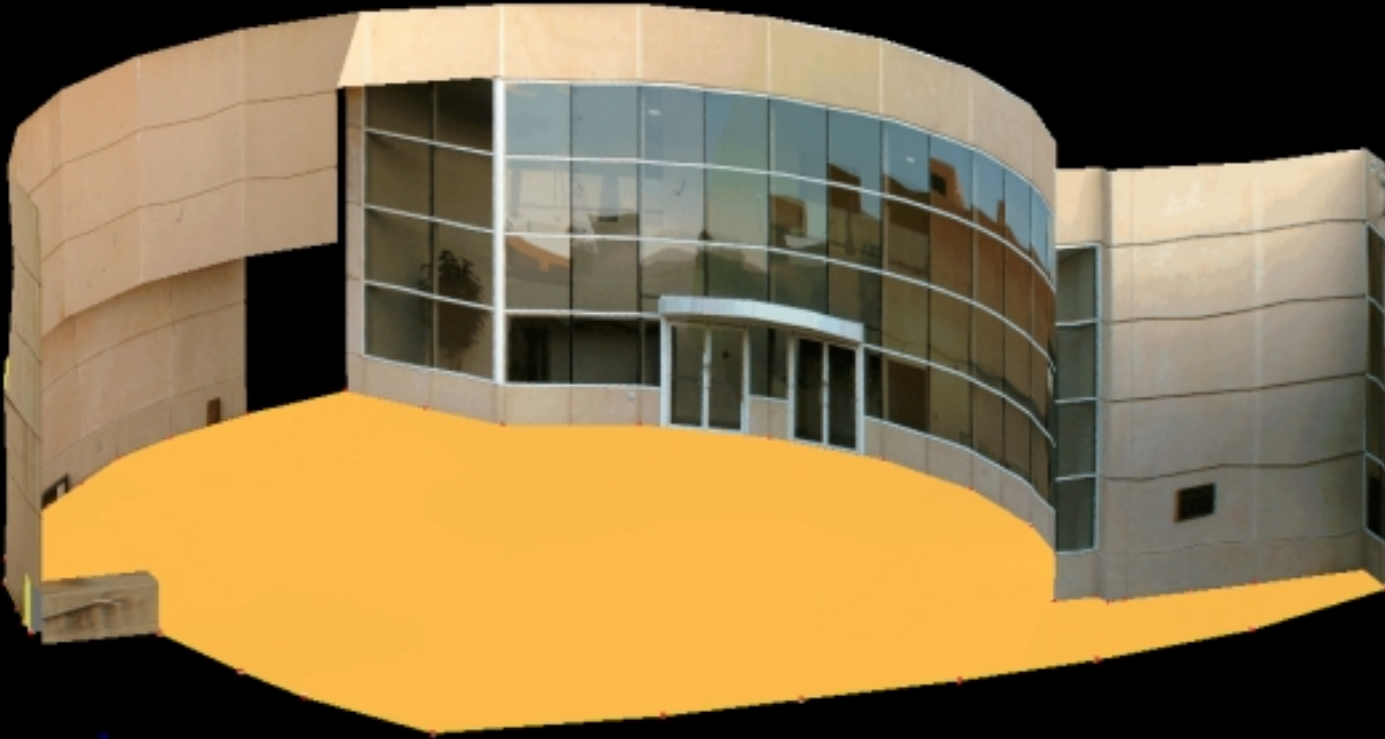


The University of Texas at Dallas

Logistical Tracking System

The logo consists of the letters "LTS" in a bold, green, sans-serif font, centered within a light blue rounded rectangle with a thin white border.

Contact Information: Nicolas Valcik, Assistant Director
Office of Strategic Planning and Analysis
The University of Texas at Dallas

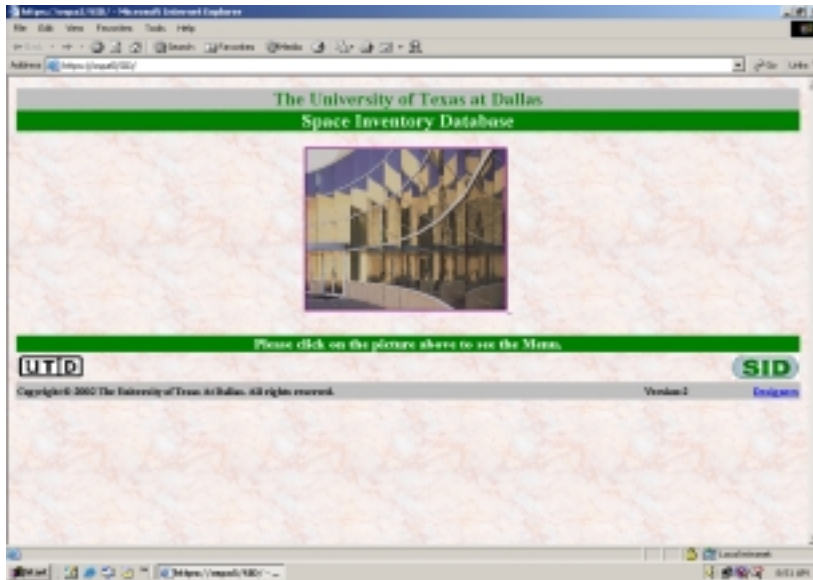
Phone: (972) 883-6190

Fax: (972) 883-2451

Email: nvalcik@utdallas.edu

Logistical Tracking System

LTS



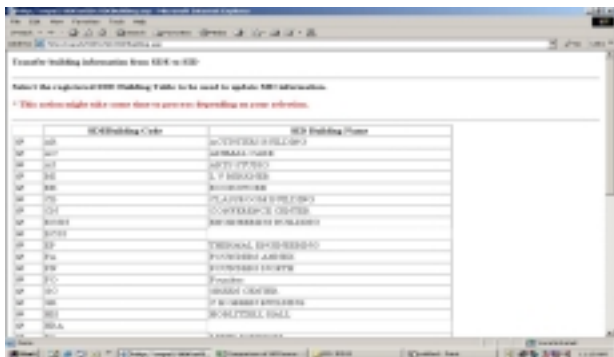
LTS Features

- Interfaces facilities information with GIS floor plans for correct square footage and cubic footage.
- Web interface that is user friendly and provides controlled data entry.
- Query report system that downloads information into Microsoft Excel format.
- Online survey for room survey for federal reporting - Indirect Cost Reports.
- Controlled update capability from GIS to the LTS database.
- Personnel have restricted access to pages for data entry and reporting for auditing and control purposes.
- Personnel can be tracked to one room or several rooms (e.g., faculty offices, labs and classrooms). Personnel can also be tracked - several to one room.
- Security can be restricted through either the server or LTS's security system.
- Accounts for State of Texas Coordinating Board Reports and Federal Indirect Cost Reports.

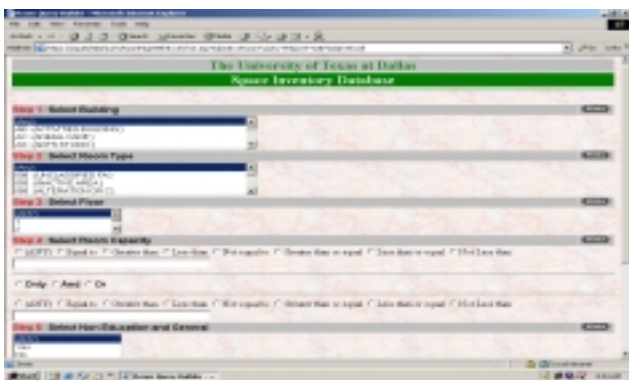
Logistical Tracking System

LTS

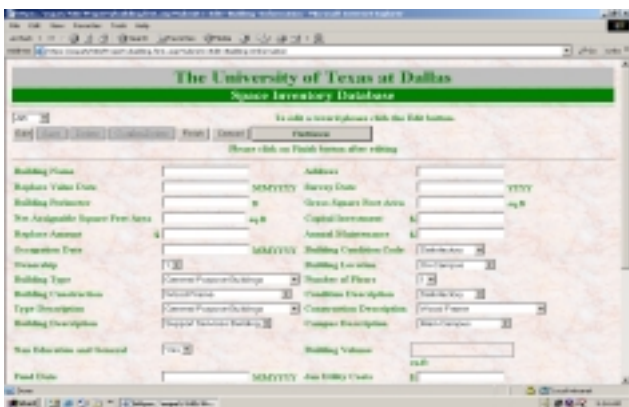
Examples of Interfaces



GIS Interface



Report Interface



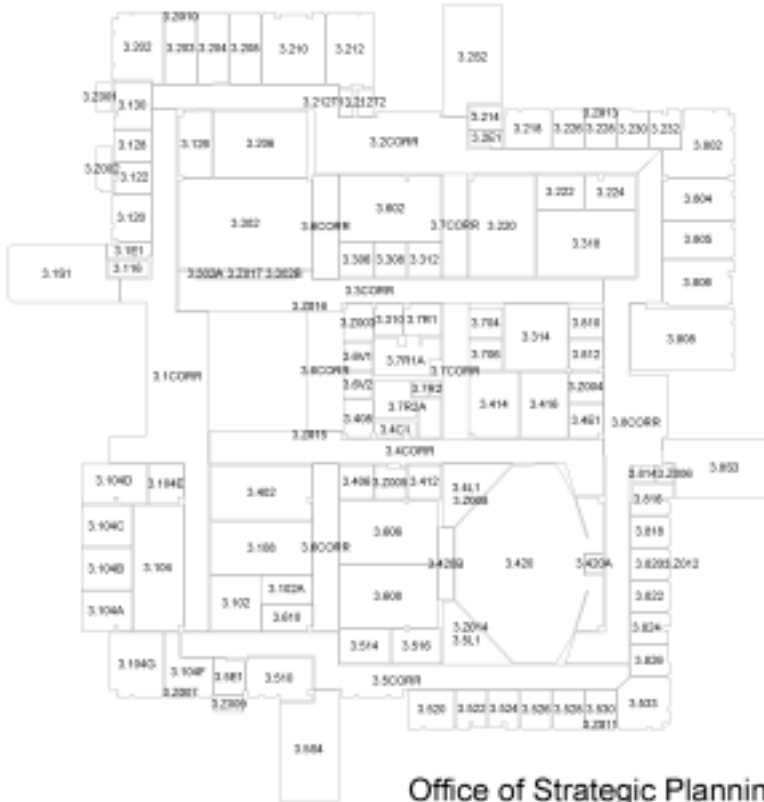
Data Entry Interface

Logistical Tracking System

LTS

LTS Uses Geographic Information Systems (GIS) as the Driver for Dimensional Data.

GR 3L



The optional GIS feature allows the user to drill down from the floor plans into any of the areas and identify the materials in place. Personnel using the space can also be defined and tracked.

GIS can account for all space that is in a building including corridors, electrical, mechanical and structural areas.

The University of Texas at Dallas

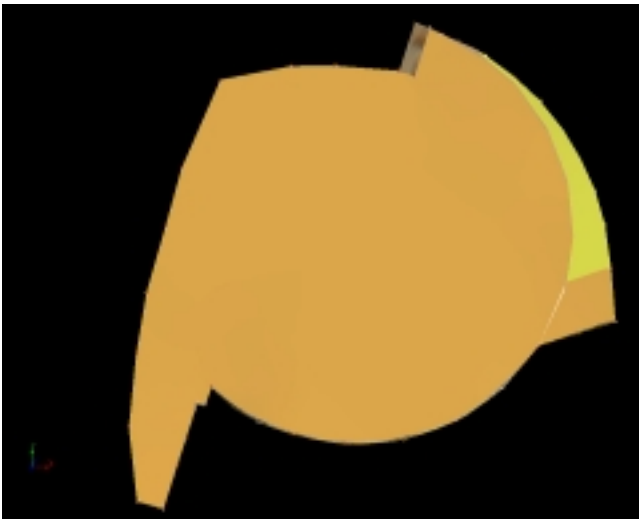
Logistical Tracking System

LTS

GIS capability allows for accurate mapping of facilities.



How the Three Dimensional Photo Realistic Image and the Two Dimensional GIS Floor Plan Interrelate



3 Dimensional Top View of Curvature



GIS 2 Dimensional Floor Plan

Logistical Tracking System

LTS

Requirements:

- **Server Requirements:**
- **Hardware:** CPU - Minimum system requirement:
Pentium II 266.
Memory - Minimum 256 MB RAM.
Hard Disk - Minimum 8 GB.
*Server size is dictated by the size of the institution.
- **Software:** Microsoft Windows 2000 Server.
Verisign Certificate.
NT IIS 5.0 (SSL Enabled).
MS SQL Server 2000 Standard Edition.
- **Optional Software:** (GIS Enabled) - ESRI ArcSDE

- **Client Requirements:**
- **Hardware:** CPU - Minimum system requirement:
Pentium II 200.
Memory – Minimum 64 MB RAM
Hard Disk - Minimum 2 GB.
- **Software:** Microsoft Windows 98 and above.
Microsoft IIS 5.5 Internet Explorer
(128 bits or higher).
Microsoft Office 97 or higher.
- **Optional Software:** (GIS Enabled) - ESRI ArcGIS/ArcInfo 8.0.

Logistical Tracking System

LTS

Security Can Be Accomplished Through the LTS logon, or Handled on the Server Security.

The screenshot shows a web browser window titled "http://ospa5/sidaccess/sid.asp - Microsoft Internet Explorer". The address bar contains "http://ospa5/sidaccess/sid.asp". The page content includes a green header with "The University of Texas at Dallas" and "Space Inventory Database". Below this is a security notice: "This is a secure area for clients and therefore requires a Password to access it. Please enter your SID User ID and Password and click on the Login button." There are two input fields: "UserID" and "Password", each with a "Hint" button to its right. A "Login" button is positioned to the right of the "Password" field. A link "Change My Password" is located below the input fields. A "Need Help?" section lists links: "SID FAQs", "I need logon help", "I have forgotten my user ID", and "I have forgotten my password". At the bottom, there is a green bar with "Client Log In Page", the UTD logo, the "SID" logo, and a "Designers" link. The footer contains "Copyright 2002 The University of Texas At Dallas. All rights reserved." and "Version:3".

- Security logon restricts departments to entering their own data on room usage.
- Security logon restricts administrative departments to working on their own data entry for different functionalities. Example: inventory control can be accessed by the property administrator but not the risk management department.
- Security logon creates an audit log that can track usage by user.

Logistical Tracking System

LTS

Versions

- **LTS 1.0 - GIS Interface/Indirect Cost Survey and Reports**
- **LTS 1.1 - EMS Module - HAZMAT/Rescue Equipment (Under Development)**
- **LTS 1.2 - Security Module - Security Systems (Under Development)**
- **LTS 1.3 - Property Module - Room Equipment/Inventory (Under Development)**
- **LTS 1.4 - Telecommunications Module - Telecom Equipment and Systems (Under Development)**
- **LTS 1.5 - Physical Plant Module – Infrastructure (Planned)**