



When every second counts...

Hello, E-Plan™ Users,

Here is your April, 2004 Newsletter to update you on E-Plan™ happenings and news in Arkansas, Louisiana, Texas and around the country.

DID YOU KNOW THAT...

How much can E-Plan™ save your area industries big money in filing their Tier II reports electronically?

Well, according to the EPA, there are some 560,000 facilities nationwide that must file Tier II reports. The General Accounting Office (GAO) estimates that 868,000 facilities must file Tier II reports. That averages about 710,000 facilities all over the United States that are required by SARA Title III to file accurate, timely Tier II reports.

The GAO estimates that it will cost these companies about \$277 million annually to file Tier II reports. EPA says that it will cost LEPC's and State Emergency Response Commissions (SERCs) another \$8.1 million to store and process these reports.

Our best estimates are that electronic on-line filing will save 15% to 25%. Therefore, Industry can save \$42 million to \$70 million a year, and the LEPC's and SERC's can save another \$1 to 2 million.

- The University of Texas at Dallas (**UTD**) Emergency Preparedness Center (home of E-Plan™) is conducting a pilot program with TXU, a large Texas Utility company, to refine Tier II electronic filing through E-Plan™. We will keep you posted on the results.
- The Texas Department of Health now estimates that they have 40-50% of Texas Tier II data in electronic form. This will be loaded in E-Plan™ by early summer.

What should you do with this information?

As you conduct joint HAZMAT training exercises with Industry or your Fire Marshals inspect business and industries, make your business/industry partners aware of E-Plan™ and its potential cost savings in filing Tier II reports.

Encourage them to participate in E-Plan™ and add more information besides their Tier II reports, such as posting their Emergency Plans, Risk Management Plans, Emergency Response equipment and supplies, etc. on E-Plan™.

Ask your business and industries to contact **Jim Staves**, Director of UTD's Emergency Preparedness Center at 972-883-2874 or send email to James.Staves@utdallas.edu for details on how to file Tier II data electronically and add additional company information to E-Plan™ in a safe and secure electronic environment.

The companies will thank you for your help in improving their bottom line profit while improving their safety and the safety of First Responders. You will be building stronger and better relationships with your business/industry partners.

LOOK FOR E-PLAN™ AT THE...

- ❖ First Annual **UTD Emergency Readiness Conference (ERC): Promoting An All Hazards Approach to Homeland Security** August 9-12, 2004 at The University of Texas at Dallas (UTD) campus in Richardson, Texas. The first ERC will focus on Hazardous Materials and Weapons of Mass Destruction, Medical Emergency Management, and Aviation Security. The Target audience for the ERCs includes corporate, city, county, state, and federal preparedness and response program managers, and elected officials. See the latest up-dates on E-Plan™ and participate in user forums. Details on the Conference will be forthcoming.
- ❖ **International Association of Fire Chiefs Southwestern Division Annual Conference** May 2-5, 2004 in Hot Springs, Arkansas. We will be conducting an E-Plan™ workshop Sunday afternoon on May 2nd at 5:30 PM at the Embassy Suites Hotel and be in our booth May 3rd and 4th.

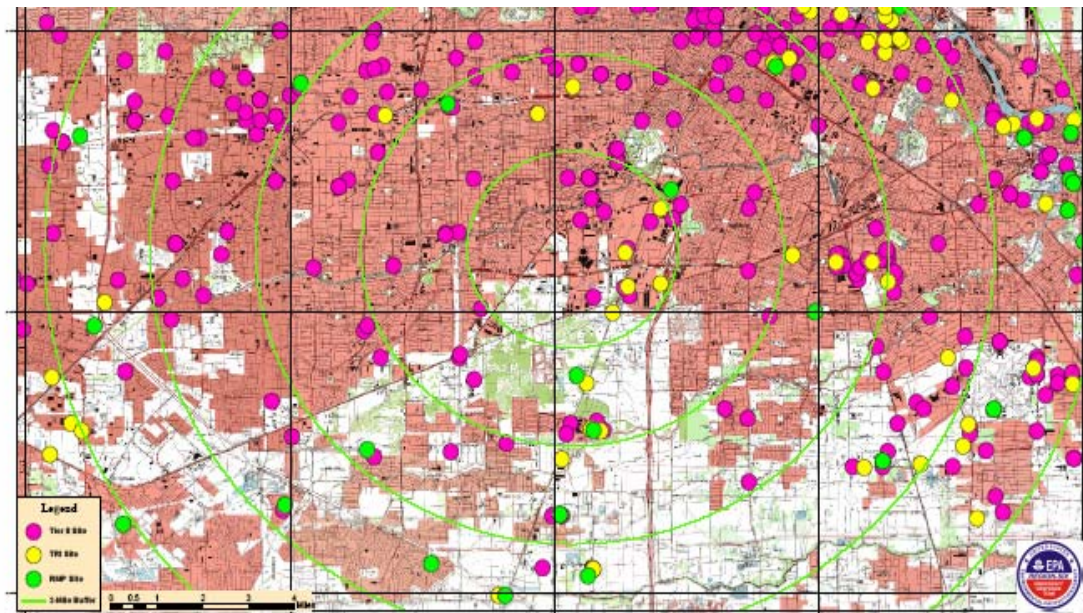
CURRENT E-PLAN™ TRAINING NEWS...

- ✓ **Total number of E-Plan™ Registered Users is now 407.**
- ❖ El Paso County, Texas is planning to start E-Plan™ training in April 2004.

E-PLAN™ FEATURES UP-DATE...

- ✓ We now have **4,705 facilities** and **21,088 chemicals** in the E-Plan™ Database.
- ✓ Encrypted CDs with a facility sort option are available for counties and LEPC's that prefer this particular format. The data on the CD can only be accessed with a proper, secured **password**, which will be different from the one you use on <http://erplan.net>.
- ✓ **MAP function - For Planning Your Response:** The "map" function has been functional for about half of the facilities in the E-Plan™ database in Arkansas, Louisiana and Texas since February. By clicking the map link of one of these facilities, a two-mile radius map around that facility will appear. This map shows the important landmarks such as schools, hospitals, and major roads in that neighborhood. More maps will be available soon!!!

"Try the mapping function for facilities in your area. Let us know how it is working for you and what changes or improvements you would like to see in mapping!"



Pink is Tier II facilities and yellow is TRI facilities and green is RMP facilities

HELPFUL HINTS...

Encourage your local companies to file their Tier II data electronically and put Emergency Plans and facility/building maps on E-Plan™. If the companies have questions about security of such data, ask them to contact **Jim Staves**, Director of UTD's Emergency Preparedness Center at 972-883-2874. He will explain, in detail, how their data is protected.

FEEDBACK...

- ❖ **Tell us what you think about E-Plan™** – We welcome all of your questions and suggestions about E-Plan™ System, E-Plan™ Website, and the E-Plan™ Newsletter.
 - What do you think of the new “Map” feature on E-Plan™?

E-Plan™ Success story!!!

On March 16, 2004 at 3:00 AM, the Corpus Christi Fire Department received a 9-1-1 call from a large petrochemical facility about an “injured contract employee”. The units that arrived were directed to a person covered with a dust-like substance that smelled like ammonia. The individual complained of throat and eye irritation and breathing difficulties.

The firefighters on scene asked what chemical the individual had been in contact with, and if he had been decontaminated. The contractors in the area, who were working on a turn-around, did not have specific contact names or chemical information.

Per Fire Department protocol, the firefighters on the scene contacted the Hazmat Chief, who went to the E-Plan™ web site (<http://erplan.net>). **Within 30 seconds** the responders had specific information on the company contact information, type of chemical and appropriate decontamination procedures. Phone calls were made to confirm product information. The Facility Emergency Manager was surprised and grateful for the call and commented, “I’m surprised that you are calling me from the plant. We usually don’t find out we had an incident at night until the morning!” He asked how the Fire Department got his contact phone number so quickly, and we replied “E-Plan!!”

The injured individual was decontaminated and transported to the hospital within 12 minutes of the Emergency Team’s arrival. When the patient arrived at the hospital, the Emergency Room Personnel requested specific information on the chemical that the patient had been exposed to. The information was printed off the E-Plan™ web site and left with the Emergency room doctors to facilitate treatment. The individual was admitted for several days, treated and released. We understand he is now back to work.

In summary, E-Plan™ was instrumental in quickly determining the chemical and providing company contact information. In less than 5 minutes, appropriate response measures were started, the Emergency team established contact with company management, and the hospital placed on notice of the injured individual’s imminent arrival for treatment of a Hazardous material exposure. An incident that could have dragged on for hours was quickly addressed, proper treatment was administered and all parties notified, within minutes. All in all, a successful outcome, with E-Plan™!!

Submitted by District Chief Michael Hernandez, Corpus Christi, Texas Fire Department.

Well done, Chief Hernandez!!! Our congratulations to you and your team!!!

Please forward **your success stories**, comments, questions, or suggestions to Jenny Wall.

- **By e-mail:** jenny.wall@utdallas.edu
- **By phone:** 972-883-2631
- **By mail:** The University of Texas at Dallas (UTD)
Digital Forensics & Emergency Preparedness Institute (DFEPI)
Emergency Preparedness Center
Attn: Jenny Wall
P.O. Box 830688 MS-EC32
Richardson, TX 75083-068