



*When every second counts...*

**Hello, E-Plan™ Users,**

**Here is your February, 2004 Newsletter to update you on E-Plan™ happenings and news in Arkansas, Louisiana, Texas and around the country.**

### [DID YOU KNOW THAT...](#)

- ❖ The more information a company posts in E-Plan, the better off they will be in case of an emergency. By cooperating with First Responders in providing such information as simple facility maps with Tier II chemical storage and use areas clearly marked, site Emergency Plans, lists of response equipment and supplies on site, etc. the company has demonstrated it's commitment to protecting it's employees and surrounding community. This can go a long way in limiting liability for the company.
- ❖ As First Responders, what can we do?
  1. Visit all the facilities in your area that handle hazardous or flammable materials. Set up a schedule that targets visiting all your facilities within one to three years, depending on the size of your local area.
  2. Meet with the Plant Managers and Emergency Managers at each Site when you visit.
  3. Encourage the companies in your area to provide simple facility maps and, emergency plans, lists of available emergency response equipment, etc. in electronic format. Explain the advantages to the company of having such information available to First Responders on E-Plan.
  4. If the facilities have questions about how to convert this information to electronic format, how to submit it to E-Plan or questions about security, have them contact: **Jim Staves**, Director of The University of Texas at Dallas's Emergency Preparedness Center at 972-883-2874.
  5. Use E-Plan™ in pre-planning scenarios for accidental **and** deliberate chemical releases.
  6. Share your good ideas and experiences with other First responders through this E-Plan™ Newsletter!

### [LOOK FOR E-PLAN™ AT THE...](#)

- **International Spills Conference** May 6-10, 2004, San Antonio, TX

## CURRENT E-PLAN™ TRAINING NEWS...

- ❖ **Total number of E-Plan™ Registered Users is now 401.**
- ❖ Arkansas TRANSCAER (TRANSPORTATION Community Awareness and Emergency Response) will provide E-Plan™ training throughout the state of Arkansas for the Arkansas Department of Emergency Management. Arkansas TRANSCAER is a volunteer organization of transporters, spill responders, government agencies, Arkansas Environmental Federation, and manufacturers that deal with Hazardous Materials. In December, 2003 and January, 2004, the TRANSCAER Board is developing the system to train First Responders in Arkansas.
- ❖ On January 7, 2004, Jack Stark and Jim Staves presented E-Plan to 32 Fire Fighters, First Responders and Emergency Management Personnel at the El Paso, Texas Fire Department Headquarters. Among those attending were Lt. Remondo Resendez, Training Director, John E. Barnes, Battalion Chief, Special Operations and Ramiro Rios, Battalion Chief. The Fire Department officers are actively engaged in getting the El Paso County Tier II reports in suitable electronic format for E-Plan ASAP.
- ❖ Jack Stark presented E-Plan™ to 25 members of the Orange County, Texas LEPC on January 14, 2004. Thanks to Deputy Chief Ken Kreger, Emergency Management Coordinator for Orange County, Texas for arranging this meeting to implement E-Plan™ in Orange, Texas.

## E-PLAN™ FEATURES UP-DATE...

We now have **4,705 facilities and 21,088 chemicals in the E-Plan™ Database.**

- ❖ **MAP function - For Planning Your Response:** The “map” function has been tested and will be functional for about half of the facilities in the E-Plan™ database in Arkansas, Louisiana and Texas in February. By clicking the map link of one of these facilities, a two-mile radius map around that facility will appear. This map shows the important landmarks such as schools, hospitals, and major roads in that neighborhood. More maps will be available soon!!!
- ❖ Encrypted CDs with a facility sort option are available for counties and LEPC's that prefer this particular format. The data on the CD can only be accessed with a proper, secured **password**, which will be different from the one you use on <http://erplan.net>.

## HELPFUL HINTS

Encourage your local companies to put Emergency Plans, Risk Management Plans and facility/building maps on E-Plan™. If the companies have questions about security of such data, ask them to contact **Jim Staves**, Director of The University of Texas at Dallas's Emergency Preparedness Center at 972-883-2874. He will explain, in detail, how their data is protected.

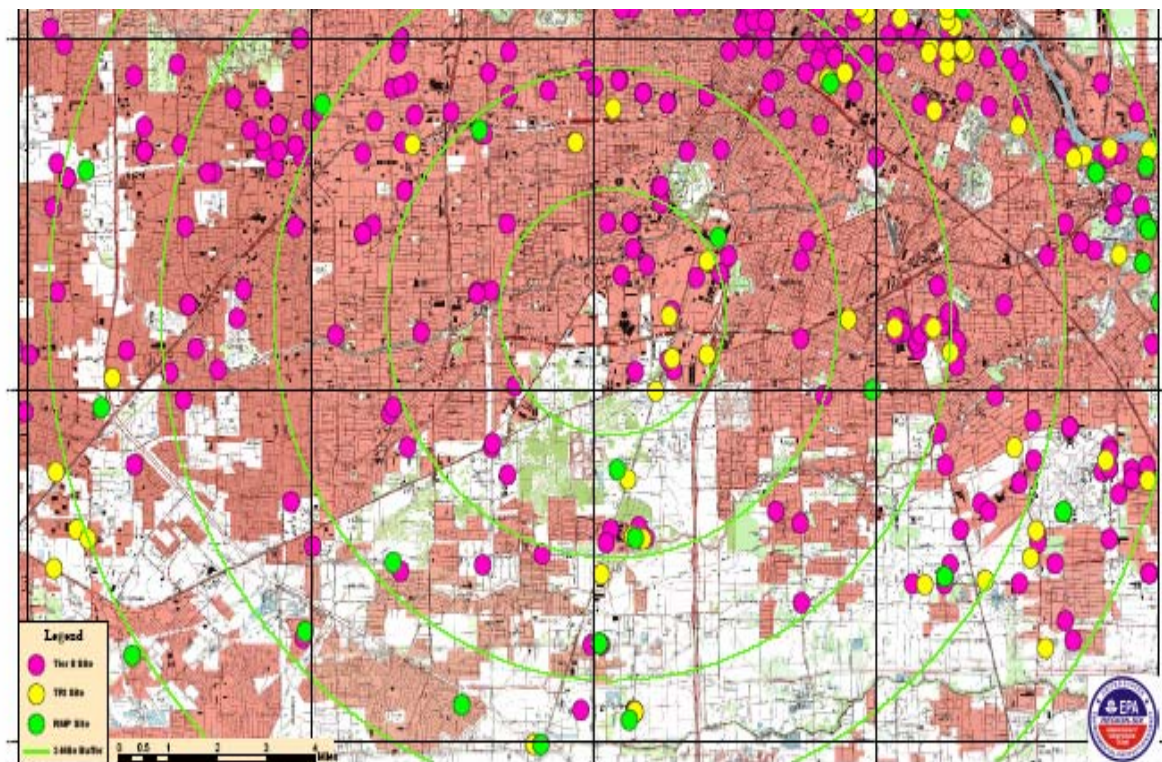
## E-PLAN™ SUCCESS STORIES

On **January 6, 2004**, a series of explosions rocked a chemical plant in Conway, Arkansas, injuring two workers and forcing the evacuation of hundreds of Conway residents and several businesses, according to press reports. The explosions caused acid leaks from the plant along with a dense black smoke cloud. Arkansas Department of Environmental Quality (ADEQ) personnel accessed E-Plan to find out what Tier II chemicals were at the plant site in order to help plan their response. ADEQ personnel were trained in E-Plan in October, 2003.

=====

### **E-Plan™ Used in Security Planning for Super Bowl**

EPA recently used E-Plan™ to assist the FBI, Texas Council on Environmental Quality, Harris County Hazmat and other agencies in planning security for Super Bowl XXXVIII. Facilities storing large quantities of hazardous chemicals in close proximity to Reliant Stadium were considered a potential security threat, so it was necessary to identify them and include them in the GIS based decision support system. EPA's Risk Management Plan database was initially used to identify potentially significant facilities, but only eight facilities were identified. By using E-Plan™, which accesses the Texas Department of Health's Tier II data, over 250 facilities of concern were identified. EPA employees examined E-Plan™ records for these facilities, and developed a prioritized list of facilities for inspection. E-Plan™ data was also used in some instances for generating "worst case scenario" dispersion plumes using the CATS atmospheric dispersion model.



**Pink is Tier II facilities and yellow is TRI facilities and green is RMP facilities**

=====

**Tuesday, February 3, 2004 at 10:00 A.M.**

A major petrochemical refinery initiated the 911 system. They had reported a trapped worker in a vessel. The vessel was approximately 45 feet above ground level with a very limited access pathway.

Responding units arrived and utilized E-Plan™ to assess risks associated with the rescue attempt. Weather played a key role in determining the location of the command post, as well as staging. This was critical as a cold front was scheduled to move into the area.

With-in minutes we were able to access specific information as to the product, weather updates, and develop a rescue / response plan that was quickly implemented. A nice bonus was having a contact name and phone number immediately available. For once we didn't have to wait for the industry rep to provide us with the information we needed to develop our plans. Unfortunately, the patient did not survive, and many things were learned, but as we move ahead, E-Plan™ continues to support our activities.

Regards,  
Michael Hernandez, District Chief  
Corpus Christi Fire Department

=====

**FEEDBACK...**

- ❖ **Success stories** – We want to share your E-Plan™ success with others! **Send us your stories on how you use E-Plan™ or other E-Plan™ success stories or for inclusion in the future newsletters. Send us your stories on how you pre-plan with E-Plan™ or what you are doing with your local Tier II facilities on Site Security.**
- ❖ **Tell us what you think about E-Plan™** – We welcome all of your questions and suggestions about E-Plan™ System, E-Plan™ Website, and the E-Plan™ Newsletter.
  - What do you think of the new “Map” feature on E-Plan™?
  - Is this Newsletter helpful and interesting to you?

\*\*\*\*\*

Please forward your success stories, comments, questions, or suggestions to **Jenny Wall**.

- **By e-mail:** [jenny.wall@utdallas.edu](mailto:jenny.wall@utdallas.edu)
- **By phone:** 972-883-2631
- **By mail:** The University of Texas at Dallas (UTD)  
Digital Forensics & Emergency Preparedness Institute (DFEPI)  
Emergency Preparedness Center  
Attn: Jenny Wall  
P.O. Box 830688 MS-EC32  
Richardson, TX 75083-068

\*\*\*\*\*



**is available online at**  
[www.utdallas.edu/research/dfepi/epc\\_center.htm](http://www.utdallas.edu/research/dfepi/epc_center.htm).