



When every second counts...

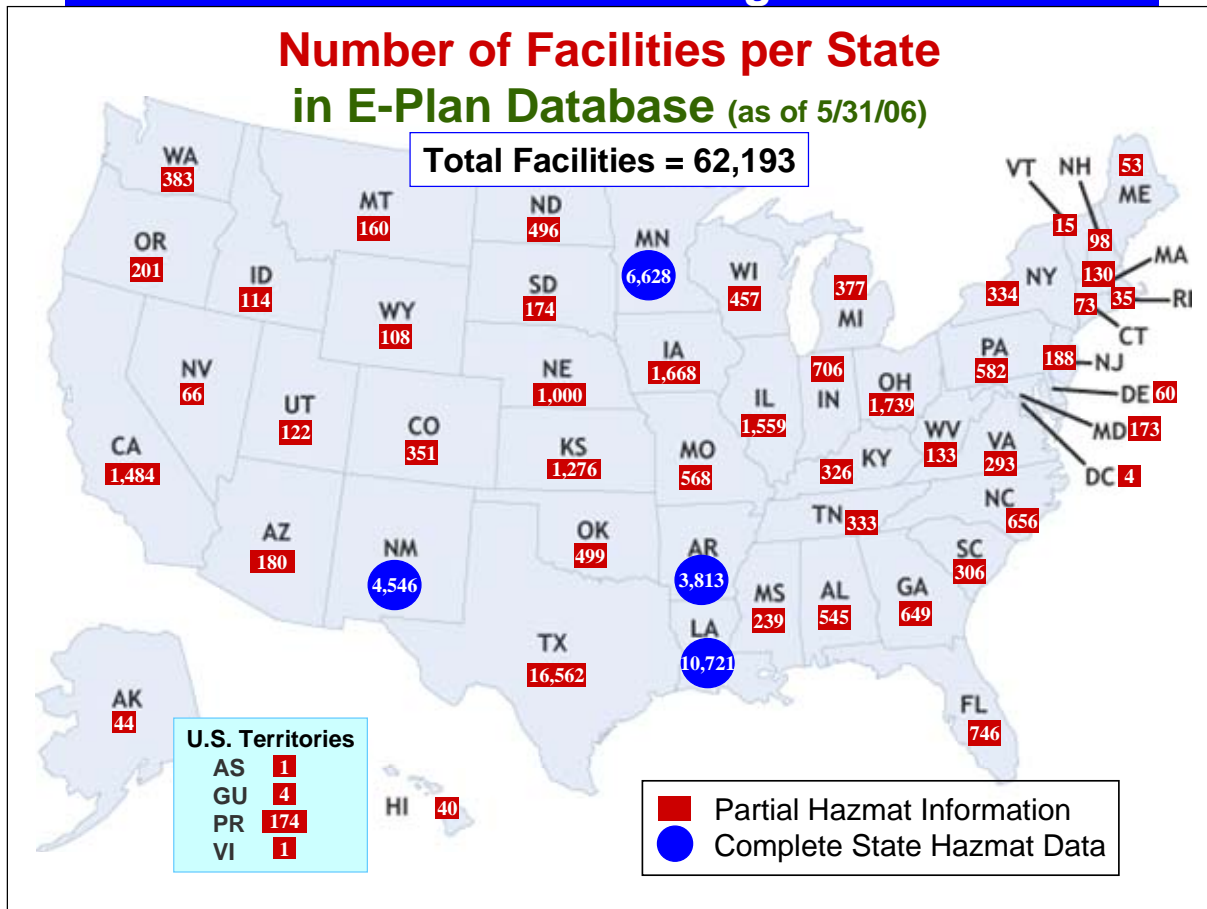
Website: <http://csepi.utdallas.edu/>

Hello, E-Plan Users and friends,

This is your June, 2006 Newsletter to update you on E-Plan events and news across the country.



E-Plan has nationwide coverage in all 50 States.



Did you know -- Your EMT's Using Oxygen regulators to treat patients need to be careful when changing oxygen cylinders!

FDA AND NIOSH Public Health Notification:

Oxygen Regulator Fires Resulting from Incorrect Use of CGA 870 Seals

This is to alert you to the danger of fires at the interface of oxygen regulators and cylinder valves because of incorrect use of CGA 870 seals, and to point out an important precaution you can take to avoid such fires.

Background:

FDA has received 12 reports in which regulators used with oxygen cylinders have burned or exploded, in some cases injuring personnel. Some of the incidents occurred during emergency medical use or during routine equipment checks. FDA and NIOSH believe that improper use of gaskets/washers in these regulators was a major factor in both the ignition and severity of the fires, although there are likely other contributing factors.

Two types of washers, referred to as CGA 870 seals, are commonly used to create the seal at the cylinder valve / regulator interface: The type required by many regulator manufacturers is a metal-bound elastomeric sealing washer that is designed for multiple use applications. The other common type, often supplied free-of-charge with refilled oxygen cylinders, is a plastic (usually Nylon ®) crush gasket suitable for single use applications.

The nylon crush gaskets require higher torque than the elastomeric sealing washers in order to seal the cylinder valve / regulator interface, and if they are used again, they require more torque with each successive use. The cylinder valve / regulator connection is designed to be hand-tightened. If the crush gaskets are re-used, the need for increased torque may require using a wrench or other hand tool, which can deform the crush gasket and damage the cylinder valve and regulator. This can result in leakage of oxygen past the cylinder valve seat and across the nylon crush gasket. According to a forensic analysis supported by FDA and NIOSH, "flow friction" caused by this leakage of compressed oxygen across the surface of the crush gasket may produce enough thermal energy to spontaneously ignite the nylon gasket material.

Recommendations:

FDA and NIOSH recommend that plastic crush gaskets never be reused, as they may require additional torque to obtain the necessary seal with each subsequent use. This can deform the gasket, increasing the likelihood that oxygen will leak around the seal and ignite.

The following general safety precautions should also be taken to avoid explosions, tank ruptures and fires from oxygen regulators.

- Always "crack" cylinder valves (open the valve just enough to allow gas to escape for a very short time) before attaching regulators in order to expel foreign matter from the outlet port of the valve.
- Always follow the regulator manufacturer's instructions for attaching the regulator to an oxygen cylinder.
- Always use the sealing gasket specified by the regulator manufacturer.
- Always inspect the regulator and CGA 870 seal before attaching it to the valve to insure that the regulator and seal are in good condition and the regulator is equipped with only one

integral metal and rubber seal that is in good condition. Avoid plastic seals.

- Tighten the T-handle firmly by hand, but do not use wrenches or other hand tools that may over-torque the handle.
- Open the post valve slowly, while maintaining a grip on the valve wrench so that it can be closed quickly if gas escapes at the juncture of the regulator and valve.

Reporting to FDA:

If you have experienced such problems, report them to the FDA (Food and Drug Administration)

To report your experience regarding the devices in this Notification, please use MedWatch, the FDA's voluntary reporting program. You may submit reports to MedWatch by phone at 1-800-FDA-1088; by FAX at 1-800-FDA-0178; by mail to MedWatch, Food and Drug Administration, 5600 Fishers Lane, Rockville, MD 20857-9787; or online at <http://www.fda.gov/medwatch/report.htm> .

Getting More Information:

If you have questions about this notification, please contact the April Stubbs-Smith, Office of Surveillance and Biometrics (HFZ-510), 1350 Piccard Drive, Rockville, Maryland, 20850, by Fax at 301-594-2968, or by e-mail at phann@cdrh.fda.gov. You may also leave a voicemail message at 301-594-0650 and we will return your call as soon as possible.

FDA medical device Public Health Notifications are available on the Internet at <http://www.fda.gov/cdrh/safety.html>. You can also be notified through email on the day the safety notification is released by subscribing to our list server. To subscribe, visit: <http://list.nih.gov/archives/dev-alert.html>.

E-Plan Tips



Forgot Your Account Password

If you have an E-Plan account and forgot your password, contact us

by email: jenny.wall@utdallas.edu

or

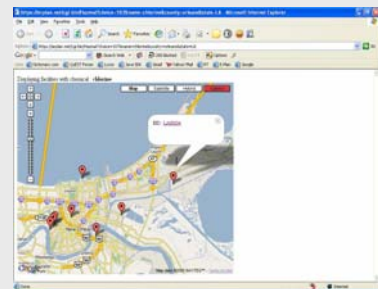
call us at 972-883-2631

We will provide you your current password.

Facility Maps on E-Plan.

You may occasionally get a message with Google Maps that says, *"We are sorry, but we don't have maps at this zoom level for this region. Try zooming out for a broader look."* If this happens to you, try two things:

1. Zoom out by clicking on the minus sign (-) on the zoom bar located on the upper left edge of the map. You may have to click on the minus sign (-) a couple of times to get Google Maps to respond properly.
2. Try logging out and logging back in. This problem is not consistent and sometimes the problem comes and goes.



E-Plan Improvement

You may have noticed that there were duplicate records for facilities in some cities. This was caused by multiple sources which were provided to us. That has been corrected and we think the duplicates have been eliminated. This was a really big job for the E-Plan Software Development Team, but we think we got them all.

If, by chance, you find some duplicate facility records in E-Plan, please let us know

by email: jenny.wall@utdallas.edu

or

call us at 972-883-2631.

E-Plan Statistics and Outreach

E-PLAN STATISTICS (as of May 31, 2006)

- ❖ Number of Facilities: **62,193**
- ❖ Number of Unique Chemicals: **21,051**
- ❖ Number of Registered Users: **1,252**

E-PLAN PRESENTATIONS LAST MONTH

- El Paso, TX - May 3, 2006: More fire department personnel signed up for E-Plan. They want another training session, which we will provide upon request.
- South East LEPC Pasadena, TX - May 15, 2006: Southeast Five City Region LEPC including various facility personnel, Fire Departments, Police departments, hospital, Emergency Managers, Hazmat and a variety of others. East Harris County will pursue a training site for a group of Harris County selected personnel for E-Plan training.

E-PLAN PRESENTATIONS SCHEDULED

- Grayson County in Sherman, TX – June 2
- EPA Regional Remover Managers Conference in Washington, DC – June 7 and 8
- North Carolina Division of Emergency Management in Raleigh, NC – June 9
- International Association of Fire Chiefs (IAFC) Fire-Rescue International Conference in Dallas, TX - September 9-14 - Hazmat Committee

E-Plan Training Schedule

- New Mexico – June

E-Plan Online Training and Registration



To register for E-Plan and/or take the E-Plan online training, go to the E-Plan homepage at <http://erplan.net> and click on the “E-Plan Training & Registration”.



There are two Accident Scenarios in the online Training module, based on real incidents. You can compare your response actions to these accidents on E-Plan. By comparing your response actions to the actual response actions, you can sharpen your response skills and learn more about how to use E-Plan.

E-Plan Online Tier2 Submit

COMPANIES - Use **E-Plan Online Tier2 Submit** if you want to save time and money and trouble filing Tier II reports and make sure they get to your local First Responders.

FIRST RESPONDERS – Do you want to always have up-to-date Tier II Reports for your facilities? Encourage your facilities to use **E-Plan Online Tier2 Submit**. This is a good reason for you or your Fire Inspector to visit your local facilities, tell them about **E-Plan Online Tier2 Submit**, and look over your pre-plans.

E-Plan is offering managers with responsibility for filing Tier II Reports for a plant or facility an online system that simplifies the process for creating the Tier II submission files. Since the system is online, there is no software to download or install! The user goes to the secure web site on E-Plan, enters their company Tier II data in a secure location that is ID and password protected. The user then creates a set of Tier II zip files that can be written to CDs or printed in hard copy and filed with the appropriate state agency.

You can get started by going to <http://erplan.net/>. This is the E-Plan web site. There may be two security alerts to get there. Say OK to the first one and Yes to the second one. The E-Plan home page will appear. Ignore the login. Click on the third line in the left-hand blue side bar, which is **Tier2 Online**. You may see another Security Alert. If so, click Yes. You have arrived at the Tier2 Online Welcome screen.

On the upper right is an FAQ link. You should review this question and answer area, since some of the answers contain tours that will help you navigate through Tier2 Online. The tours, which operate somewhat like a VCR, show you how the system works.

IMPORTANT: On the upper right of the screen, you will find the **“Contact Us”** link. Please use it to report any problems or to ask questions. We will answer your inquiry as soon as possible.

If this is your first time to use the system, click on the ‘Click here for a new Submission’. If you’ve been here before and want to review or revise your data, enter your Access ID (which you have previously recorded, somewhere) and password and the system will connect to your previously entered data.

First time users will select a Password, enter their name and e-mail address and then start the data entry process. Data is entered for **emergency contact personnel, facilities, and chemicals** in those facilities. Data can be added, edited, or deleted later by returning and using the Access ID and Password.

After entering your Tier II data, you can create the files you need to send to your state. **Note that Tier2 Online does NOT make the filing for you with the state at this time.** If we have enough interest, we may add online state filing at a later date. For now, you must create the files and then send them to the state by an appropriate means to meet the statutory filing requirement of your state.

IMPORTANT: On completing your first data entry you are assigned an Access ID. You must enter this Access ID and the password you chose to access your data records. Please write down your Access ID number. You will need it each time you access your data.

Note that the data you enter in this database is available to your First Responders via the E-Plan system. Please keep the data current so that your First Responders will have the correct information when they need it.

Good luck and use the **“Contact Us”** button on the web site with your questions or comments.

And, now for a bit of humor!

Silent Treatment

A man and his wife were having some problems at home and were giving each other the silent treatment. Suddenly, the man realized that the next day, he would need his wife to wake him at 5:00 AM for an early morning business flight.

Not wanting to be the first to break the silence (and LOSE), he wrote on a piece of paper, "Please wake me at 5:00 AM." He left it where he knew she would find it.

The next morning, the man woke up, only to discover it was 9:00 AM and he had missed his flight. Furious, he was about to go and see why his wife hadn't wakened him, when he noticed a piece of paper by the bed. The paper said, "It is 5:00 AM. Wake up."

Men are not equipped for these kinds of contests.
God may have created man before woman,
but there is always a rough draft before the masterpiece.

Wife vs. Husband

A couple drove down a country road for several miles, not saying a word.

An earlier discussion had led to an argument and neither of them wanted to concede their position.

As they passed a barnyard of mules, goats, and pigs, the husband asked sarcastically, "Relatives of yours?"

"Yep," the wife replied, "in-laws."

Women's Revenge

"Cash, check or charge?" I asked, after folding items the woman wished to purchase.

As she fumbled for her wallet I noticed a remote control for a television set in her purse.

"So, do you always carry your TV remote?" I asked.

"No," she replied, "but my husband refused to come shopping with me, and I figured this was the most evil thing I could do to him legally."

Contact Us ...



Send your comments and questions and suggestions to:

- **By e-mail:** jenny.wall@utdallas.edu
- **By phone:** 972-883-2631
- **By fax:** 972-883-4441
- **By mail:** University of Texas at Dallas
CyberSecurity & Emergency Preparedness Institute
Attn: E-Plan
P.O. Box 830688 WT-11
Richardson, TX 75083-0688

**Read more from previous issues of the E-Plan Newsletter at
http://csepi.utdallas.edu/epc_center.htm**



Remember our troops fighting for our security and freedom!

