



When every second counts...

Website: <http://csepi.utdallas.edu/>

Hello, E-Plan Users and friends,

This is your March, 2006 Newsletter to update you on E-Plan events and news across the country.



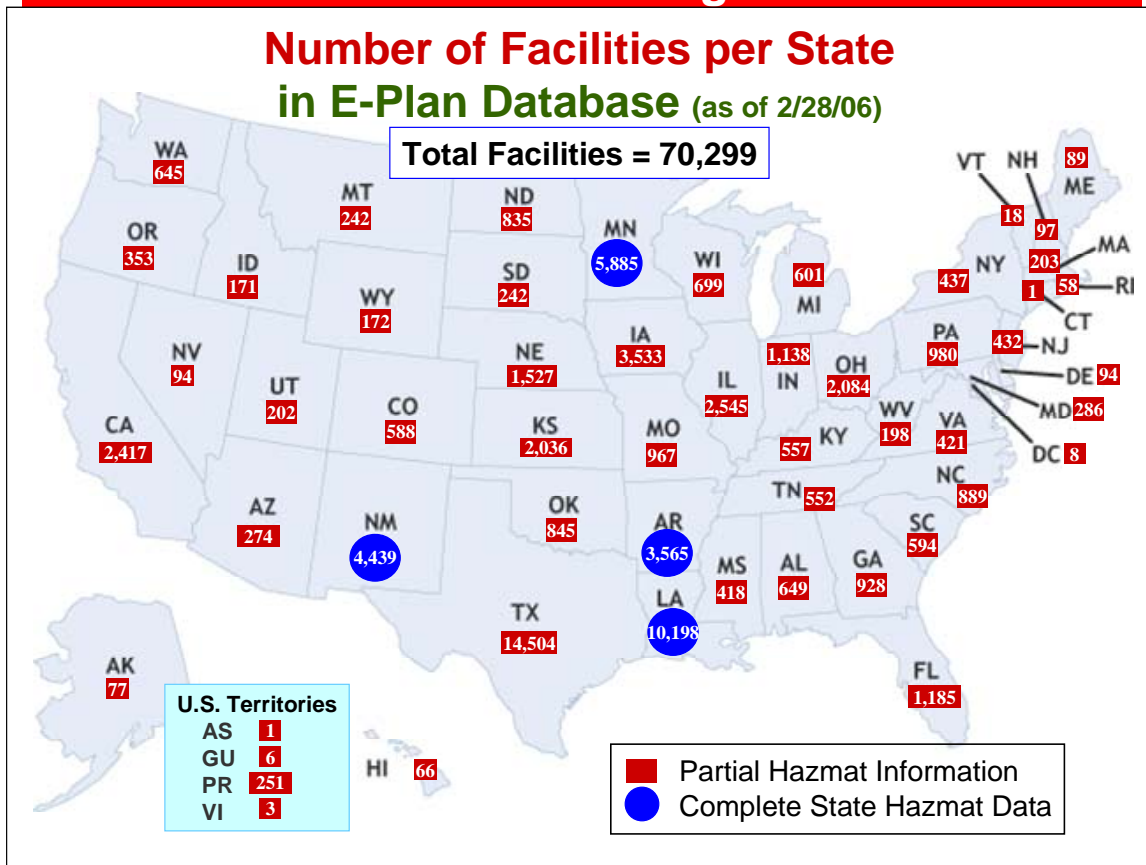
Spring



National Anthem



E-Plan has nationwide coverage in all 50 States.



E-Plan Tips



Forgot Your Account Password

If you have an E-Plan account and forgot your password, contact us

by email: jenny.wall@utdallas.edu

or

call us at [972-883-2631](tel:972-883-2631)

We will provide you your current password.

E-Plan Statistics and Outreach

E-PLAN STATISTICS (as of February 28, 2006)

- ❖ Number of Facilities: **70,299**
- ❖ Number of Unique Chemicals: **21,057**
- ❖ Number of Registered Users: **1,194**

E-PLAN PRESENTATIONS LAST MONTH

- Dallas Poison Control Center – February 2, 2006 in Dallas, TX
 - Dallas Poison Control will pilot E-Plan for other national Poison Control centers.
- New York State Emergency Managers Association - February 8, 2006 in Syracuse, NY
 - NY would like to have their facilities in E-Plan by 2007.
- Greensboro LEPC – February 9, 2006 in Greensboro, NC
 - Greensboro and Hickory, NC will push to have E-Plan adopted at the state level for Tier II management in North Carolina.
- Exelon Power and Tarrant County LEPC - February 15, 2006 in Fort Worth, TX
 - Cities of Arlington and Fort Worth have both indicated a strong interest in installing E-Plan in their facilities.

E-PLAN TRAINING LAST MONTH

- Greensboro, NC LEPC – February 9, 2006: 35 attendees
- Exelon Power and Tarrant County LEPC – February 15, 2006: 40 attendees
- Companies from City of Dallas, TX – February 16, 2006 on UTD campus: 30 attendees
 - Electronic Tier II filing training and Tier2 beta testing (more about that later in this Newsletter)

E-PLAN PRESENTATIONS / TRAINING SCHEDULED

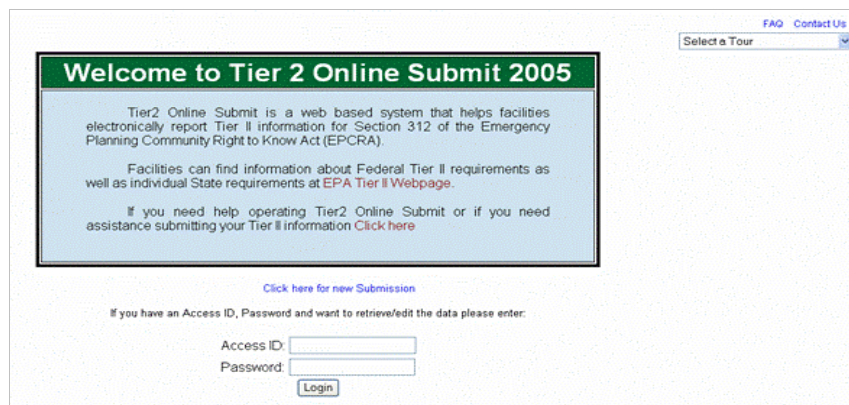
- Humble, TX (Atascocita Fire Department and area) – March 1, 2006
- Fort Worth, TX (City of Fort Worth) – March 6
- Pasadena, TX LEPC – March 9
- Santa Fe, NM – March 24
- Corsicana, TX (and surrounding counties) – April 12
- Weatherford, TX – May 12
- Pasadena, TX (Southeast Region LEPC – 5 cities) – May 22, 2006

Tier2 Online Submit is in Beta Testing now!

E-Plan is offering managers with responsibility for filing Tier II Reports an online system that simplifies the process for creating the Tier II submission files. Since the system is online, there is no software to download or install! The user goes to the secure web site on E-Plan, enters their company Tier II data in a secure location that is ID and password protected. The user then creates a set of Tier II zip files that can be written to CDs or printed in hard copy and filed with the appropriate state agency.

We have eliminated most of the “bugs” out of the software with the help of early online Tier2 Submit users, especially the companies in cities of Mesquite and Dallas, Texas. Company representatives entered their own Tier II data into E-Plan and helped us locate and eliminate some programming “bugs”. Our online Tier2 Submit program works much more smoothly, now and is very “user friendly”.

You can get started by going to <http://erplan.net/>. This is the E-Plan website. There may be two security alerts to get there. Say OK to the first one and Yes to the second one. The E-Plan home page will appear. Ignore the login. Click on the third line in the left-hand blue side bar, which is **Tier2 Online BETA**. You may see another Security Alert. If so, click Yes. You have arrived at the Tier2 Online Welcome screen.



FAQ Contact Us
Select a Tour

Welcome to Tier 2 Online Submit 2005

Tier2 Online Submit is a web based system that helps facilities electronically report Tier II information for Section 312 of the Emergency Planning Community Right to Know Act (EPCRA).

Facilities can find information about Federal Tier II requirements as well as individual State requirements at [EPA Tier II Webpage](#).

If you need help operating Tier2 Online Submit or if you need assistance submitting your Tier II information [Click here](#)

[Click here for new Submission](#)

If you have an Access ID, Password and want to retrieve/edit the data please enter:

Access ID:

Password:

On the upper right is an FAQ link. You should review this question and answer area, since some of the answers contain tours that will help you navigate through Tier2 Online. The tours, which operate somewhat like a VCR, show you how the system works. Also on the upper right of the screen, you will find the “Contact Us” link. Please use it to report any problems or to ask questions. We will answer your inquiry as soon as possible.

If this is your first time to use the system, click on the ‘Click here for a new Submission’. If you’ve been here before and want to review or revise your data, enter your Access ID (which you have previously recorded, somewhere) and password and the system will connect to your previously entered data.

First time users will select a Password, enter their name and e-mail address and then start the data entry process. Data is entered for **emergency contact personnel, facilities, and chemicals** in those facilities. Data can be added, edited, or deleted later by returning and using the Access ID and Password.

After entering your Tier II data, you can create the files you need to send to your state. Note that Tier2 Online does NOT make the filing for you with the state **at this time**. If we have enough interest, we may add online state filing at a later date. For now, you must create the files and then send them to the state by an appropriate means to meet the statutory filing requirement of your state.

IMPORTANT - On completing your first data entry you are assigned an Access ID. You must enter this Access ID and the password you chose to access your data records. Please write down your Access ID number. You will need it each time you access your data.

Note that the data you enter in this database is available to First Responders via the E-Plan system. Please keep the data current so that First Responders will have the correct information when they need it.

Good luck and use the “Contact Us” button on the web site with your questions or comments.

Did you know...

“Hazmat: Hotzone” Simulator Developed for Firefighters

Carnegie-Mellon University, Pittsburgh, PA is developing a simulator for firefighters designed to fill the gap between classroom or firehouse lectures and mock disasters.

For the past three years, Carnegie-Mellon University professor and graduate students have been working on “Hazmat: Hotzone,” a networked, multiplayer simulator that's a virtual disaster drill for dealing with hazardous materials.

A prototype has been tested by emergency officials in New York and southwestern Pennsylvania.

This multi-player simulation uses video game technology to help students make the critical decisions required of First Responders during Hazmat Emergencies.

Instructors can customize scenarios by location, hazardous materials, weather conditions, etc. Students at individual computer terminals work as Incident Commanders and Crew Members. Unexpected secondary events can be launched at any time by the instructors.

When it's finished, Carnegie Mellon plans to provide the program free to firefighting training centers nationwide. We will keep you up-dated on the availability of “Hazmat: Hotzone” for your training needs.

Carnegie-Mellon University will license the game to a company, which plans to commercialize it within a year. You are among the first people in the country to know about this new development in Hazmat Training! We will keep you posted." For more information, please contact Julie Gedeon (jgedeon@andrew.cmu.edu or 412-268-9277).

Facility Maps on E-Plan

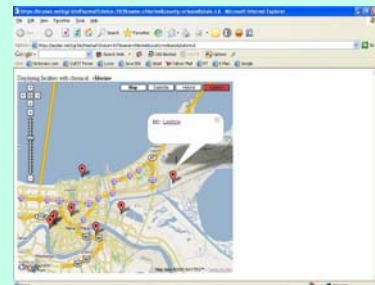
You may occasionally get a message with Google Maps that says, *“We are sorry, but we don't have maps at this zoom level for this region. Try zooming out for a broader look.”* If this happens to you, try two things:

1. Zoom out by clicking on the minus sign (-) on the zoom bar located on the upper left edge of the map. You may have to click on the minus sign (-) a couple of times to get Google Maps to respond properly.
2. Try logging out and logging back in. This problem is not consistent and sometimes the problem comes and goes.

If this does happen to you, please report it to E-Plan:

- **By e-mail:** jenny.wall@utdallas.edu
- **By phone:** 972-883-2631
- **By fax:** 972-883-4441

Thanks in advance for your help and cooperation!



E-Plan Online Training and Registration

To register for E-Plan and/or take the E-Plan online training, go to the E-Plan homepage at <http://erplan.net> and click on the "E-Plan Training & Registration".



- ◆ *To become an authorized E-Plan user, just follow the prompts to fill out the online "Account Request" and "New User Information" forms.*
- ◆ *You can take the online E-Plan training from this web page. Online training will take an hour or less.*

◆ Accident Scenarios in Training Module



There are two Accident Scenarios in the Online Training module, based on real incidents. You can compare your response actions to these two accidents on E-Plan. By comparing your response actions to the actual response actions, you can sharpen your response skills and learn more about how to use E-Plan.



And, now for a bit of humor!

The wise old Mother Superior from county Tipperary was dying. The nuns gathered around her bed trying to make her comfortable. They gave her some warm milk to drink, but she refused it.

One of the nuns took the glass back to the kitchen. Remembering a bottle of Irish whiskey they had received as a gift the previous Christmas, she opened and poured a generous amount into the warm milk.

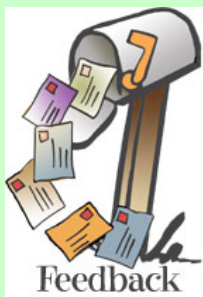
When she walked back at Mother Superior's bed, she held the glass to her lips. Mother drank a little, then a little more. Before they knew it, she had drunk the whole glass down to the last drop.

"Mother," the nuns asked with earnest, "please give us some wisdom before you die."

She raised herself up in bed with a pious look on her face and said, "Don't sell that cow."



Contact Us ...



Send your comments and questions and suggestions to:

- **By e-mail:** jenny.wall@utdallas.edu
- **By phone:** 972-883-2631
- **By Fax:** 972-883-4441
- **By mail:** University of Texas at Dallas
CyberSecurity & Emergency Preparedness Institute
Attn: E-Plan
P.O. Box 830688 EC-34
Richardson, TX 75083-0688

Read more from previous issues of the E-Plan Newsletter at
http://csepi.utdallas.edu/epc_center.htm



**Remember our troops fighting for
our safety and security!**

