



When every second counts...

<http://www.utdallas.edu/research/dfepi/>

Hello, E-Plan™ Users,

Here is the May, 2004 Newsletter to update you on E-Plan™ happenings and news in Arkansas, Louisiana, New Mexico, Texas and around the country.



DID YOU KNOW THAT...

E-Plan™ works in conjunction with CHEMTREC to get you accurate, precise Hazardous Materials information exactly when you need it, 24 hours per day, seven days per week.

CHEMTREC is the Chemical Transportation Emergency Center in Arlington, VA operated 24/7 by the American Chemistry Council. Its toll-free telephone number is 1-800-424-9300. In the event of a chemical transportation accident or emergency, CHEMTREC can provide two major services for you.

- a. CHEMTREC can quickly fax or e-mail you a Material Safety Data Sheet (MSDS) for the chemical involved in accident or emergency from their extensive MSDS library, which is probably the most extensive library of MSDS's in the world.
- b. CHEMTREC will contact the shipper of the chemical to try to arrange for an expert from the shipping company or an associated chemical producer to talk with you.

Today, E-Plan™ has some 21,000 of the most common chemicals in use in the U.S. stored in its database. Linking to E-Plan™ **online** system and going to the "Chemical Search" feature **immediately** give you:

1. A MSDS for the chemical involved in the accident
2. An immediate link to the appropriate Emergency Response Guide (ERG) page for that chemical
3. Coast Guard Chemical Hazards Response Information System (CHRIS) data for the chemical, if CHRIS data is available
4. Chemical Profile Data for the chemical involved in the accident

As a result, **E-Plan™** provides you:

- ✓ **Four sources of the information listed above to plan your response**, while you are waiting for CHEMTREC to patch you into an expert from the shipping company, which may take anywhere from a few minutes to a few hours, depending on the time of day and the availability of an expert.
- ✓ **Additional information about a chemical accident or emergency that occurs in or close to a fixed facility (such as a chemical plant, refinery, water treatment plant, chemical warehouse, etc.)** that CHEMTREC does not have.
- ✓ **An instant link to local weather, a list of additional information resources and, in most cases, a 2-mile diameter map around the facility.** The map lets you pinpoint schools, hospitals, other facilities using hazardous materials, major stores/shopping centers, etc. that might be impacted by the incident.

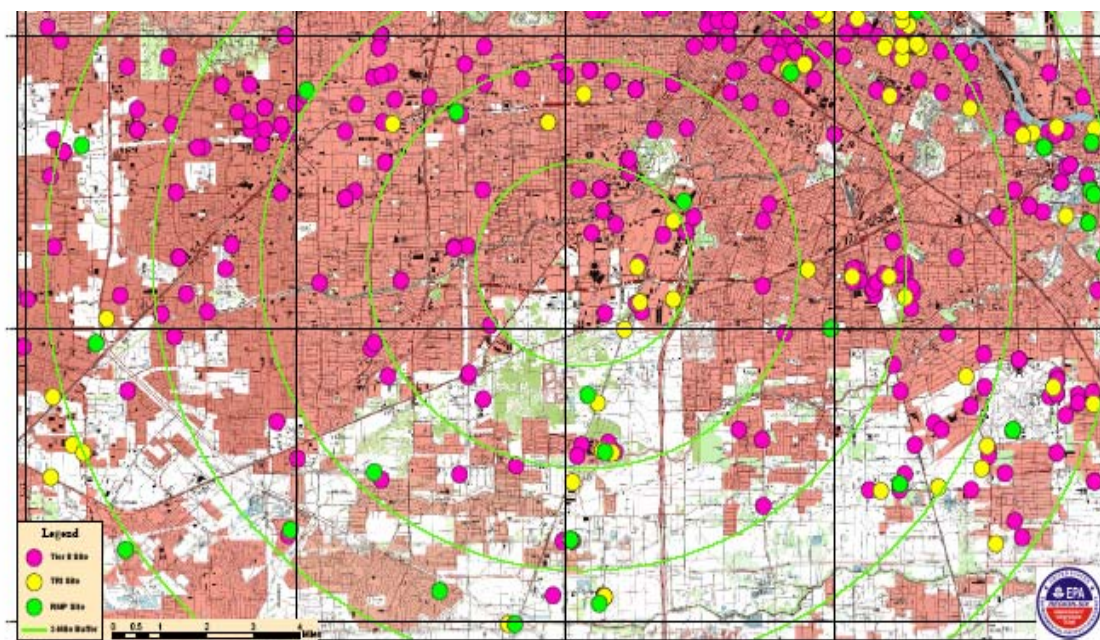
E-Plan™ and CHEMTREC - Working together to protect our community and First Responders.

CURRENT E-PLAN™ TRAINING NEWS...

- ✓ **Total number of E-Plan™ Registered Users is now 420.**
- ❖ E-Plan™ was introduced to New Mexico on April 1, 2004 by EPA's Jim Staves and Jack Stark, who demonstrated E-Plan's capabilities to Santa Fe City/County Emergency Management and the State Haz Mat Coordinator. On April 21, 2004 Jack Stark reviewed E-Plan™ with 78 members of the New Mexico Emergency Management Association.
- ❖ The International Association of Fire Chiefs Hazmat Committee is in the final stages of formally endorsing E-Plan™. More details next month.

E-PLAN™ FEATURES UP-DATE...

- ✓ **We now have 4,705 facilities and 21,058 chemicals in the E-Plan™ Database.**
- ✓ The 21,000 plus chemicals in the E-Plan™ data base includes such rare and unusual chemicals as Osmium Tetroxide (UN 2471 and ER Guide #154), which has been implicated as a potential terrorist weapon in a plot foiled by U.S. and British Security forces.
- ❖ A grant proposal is being submitted to EPA, Cincinnati, Ohio for developing an easy to use floor plan mapping tool.
- ✓ Encrypted CDs with a facility sort option are available for counties and LEPC's that prefer this particular format. The data on the CD can only be accessed with a proper, secured **password**, which will be different from the one you use on <http://erplan.net>.
- ✓ **MAP function - For Planning Your Response:** The "map" function is now functional for more than half of the facilities in the E-Plan™ database in Arkansas, Louisiana and Texas since February. By clicking the "Simple Facility Map" link of one of the facilities in E-Plan™, a two-mile diameter map around that facility will appear. This map shows the important landmarks such as schools, hospitals, utilities, other facilities storing/using hazardous materials, tank farms and major roads in that neighborhood.



Pink are Tier II facilities and yellow are TRI facilities and green are RMP facilities

“EMERGENCY READINESS CONFERENCE” at The University of Texas at Dallas (UTD) in Richardson, Texas (August 9-12, 2004)

- ❖ Mark your calendars now for August 9th to 12th for the First Annual **UTD Emergency Readiness Conference: Promoting An All Hazards Approach to Homeland Security**. For conference information, go to <http://som.utdallas.edu/erc/index.htm>.

 **E-Plan™ Success story...**

Two Fire Chiefs on almost opposite ends of the United States, Michael Hernandez, Corpus Christi, Texas and Greg Rohr, Hickory, North Carolina have written Research Papers as part of their National Fire Academy Executive Officer Program. Both of these papers looked at E-Plan™ critically and concluded that E-Plan™ was a tool that every First Responder should have available to manage the huge volume of Hazardous Materials information that must be sorted through to get the critical information needed to respond quickly and appropriately to HAZ MAT incidents.


Chief Hernandez’s paper is entitled, “*A Critical Examination of the U.S. EPA’s E-Plan as a Risk Reduction Tool for the Corpus Christi Fire Department.*” Chief Rohr’s paper is “*Pre-Incident Planning program with an Initial Focus on Hazardous Materials for the Hickory Fire Department.*”

You can contact Chief Michael Hernandez for a copy of his paper or with questions at the Corpus Christi, Texas Fire Department at 361-826-3900 or MHernandez@cctexas.com.

You can contact Deputy Greg Rohr for a copy of his paper or with questions at the Hickory, North Carolina Fire Department at 828-323-7522 or grohr@ci.hickory.nc.us.

.....
FEEDBACK...

- ❖ **Tell us what you think about E-Plan™** – We welcome all of your questions and suggestions about E-Plan™ System, E-Plan™ Website, and the E-Plan™ Newsletter.

 **What do you think of the new “Map” feature on E-Plan™? Try it! It is really cool! If you have any trouble with the “Simple Map” button on your E-Plan™ specific facility page, let us know.**

Please forward **your success stories** to Jenny Wall at UTD.

- **By e-mail:** jenny.wall@utdallas.edu
- **By phone:** 972-883-2631
- **By mail:** The University of Texas at Dallas (UTD)
Digital Forensics & Emergency Preparedness Institute (DFEPI)
Emergency Preparedness Center
Attn: Jenny Wall
P.O. Box 830688 MS-EC32
Richardson, TX 75083-0688

**Have a safe and happy Memorial Day Holiday.
Remember our troops fighting for our security and freedom!**