



When every second counts...

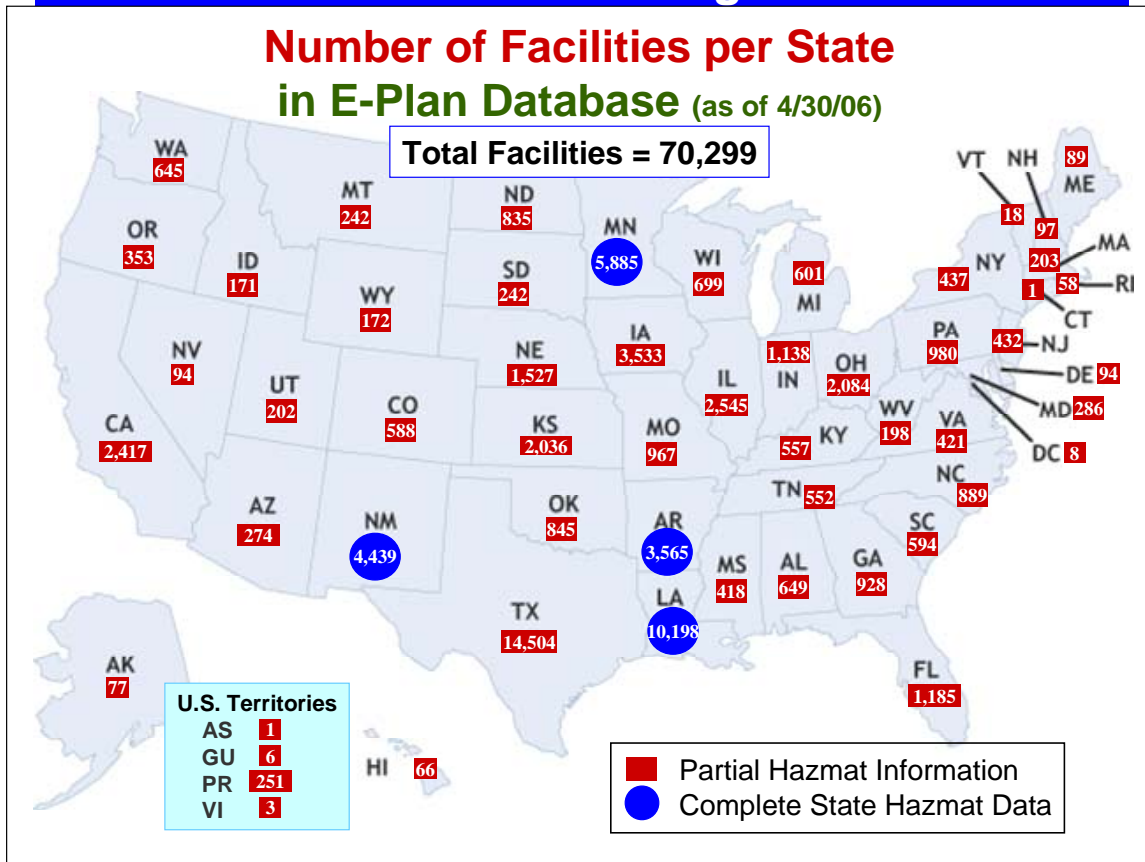
Website: <http://csepi.utdallas.edu/>

Hello, E-Plan Users and friends,

This is your May, 2006 Newsletter to update you on E-Plan events and news across the country.



E-Plan has nationwide coverage in all 50 States.



Did you know -- The March 20, 2006 issue of Business Week Magazine has an article about Hazardous Materials transported by rail titled “**These Chemicals are so Deadly**”.

Imagine a terrorist planting a bomb under a rail car carrying 90 tons (180,000 pounds) of liquid chlorine near the National Mall in Washington, DC. The bomb explodes on July 4th when 500,000 people are gathered there for fireworks. When the railcar is blown up, as many as 100,000 people could be killed or injured within 30 minutes, according to the U.S. Naval Research Lab. A derailment last year involving a chlorine rail car near Graniteville, SC resulted in the death of nine people and 75 being hospitalized.

Richard A. Falkenrath, former deputy homeland security advisor to President Bush, said “These chemicals are so deadly, and they are shipped through our urban areas in large quantities.”

The problems of safeguarding Hazmat Chemical shipments by rail, truck or barge can be solved, however. Some suggestions from the editors of the E-Plan Newsletter are:

1. Improve Hazmat Awareness and Training for all First Responders
2. GPS tracking (location, temperature and pressure) of Hazmat loads shipped by rail and truck. This is becoming more and more common.
3. Limit Hazmat shipments in large urban areas to products being delivered and route through products around the city by using Interstate ring roads around big cities for truck shipments. Utilize railroad re-routing when possible.
4. Utilize CHEMTREC (800-424-9300) and E-Plan (<http://erplan.net>) for emergency Hazmat information needs.
5. Study new ways to identify Hazmat shipment rail cars and trucks, such as Radio Frequency Identification (RFID) tags that are accessible only by shippers, manufacturers and First Responders.
6. Improve physical security around chemical plants, railroad marshalling yards and refineries. This work is already in progress by railroads and chemical companies through the American Chemistry Council’s Responsible Care ® program.
7. Enlist volunteers who live around chemical plants, refineries and railroad yards in a local police and company sponsored “Neighborhood Watch” program to be on the look-out for suspicious persons.

Of course, none of these suggestions are foolproof or perfect in themselves, but taken together, they all help to lessen the impact of Hazmat chemicals being used as weapons by terrorists.

If you have any [suggestions to add to this list](#) or [comments/disagreements](#) with these seven items to improve the safety of Hazmat shipments, please do not hesitate to contact us at (972) 883-2631 or via e-mail at jenny.wall@utdallas.edu.

E-Plan Tips



Forgot Your Account Password

If you have an E-Plan account and forgot your password, contact us

by email: jenny.wall@utdallas.edu

or

call us at 972-883-2631

We will provide you your current password.

E-Plan Statistics and Outreach

E-PLAN STATISTICS (as of April 30, 2006)

- ❖ Number of Facilities: **70,299**
- ❖ Number of Unique Chemicals: **21,051**
- ❖ Number of Registered Users: **1,237**

E-PLAN PRESENTATIONS LAST MONTH

- Corsicana, TX Executive Committee (and surrounding counties) on April 24. E-Plan will be installed and used in Navarro County and possibly cross over to neighboring counties as deemed appropriate.
- New York SERC in Albany, NY April 28 – Richard Morrow and Jim Staves presented E-Plan April 28 to the New York State SERC and were well-received by the officials.
- Fort Worth, TX, (City of Fort Worth)

E-PLAN PRESENTATIONS SCHEDULED

- El Paso, TX - May 3
- Weatherford, TX - May 11
- South East LEPC presentation in Pasadena, TX - May 15
- Grayson County in Sherman, TX - May 24
- Raleigh, NC – North Carolina Division of Emergency Management
- International Association of Fire Chiefs (IAFC) Fire-Rescue International Conference in Dallas, TX - September 9-14 - Hazmat Committee

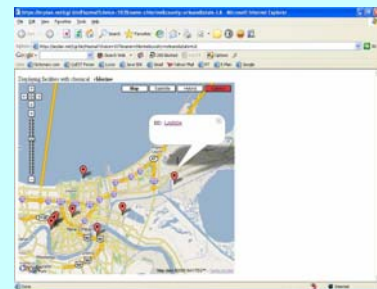
E-Plan Training Schedule

- New Mexico – May/June

Facility Maps on E-Plan

You may occasionally get a message with Google Maps that says, *“We are sorry, but we don’t have maps at this zoom level for this region. Try zooming out for a broader look.”* If this happens to you, try two things:

1. Zoom out by clicking on the minus sign (-) on the zoom bar located on the upper left edge of the map. You may have to click on the minus sign (-) a couple of times to get Google Maps to respond properly.
2. Try logging out and logging back in. This problem is not consistent and sometimes the problem comes and goes.



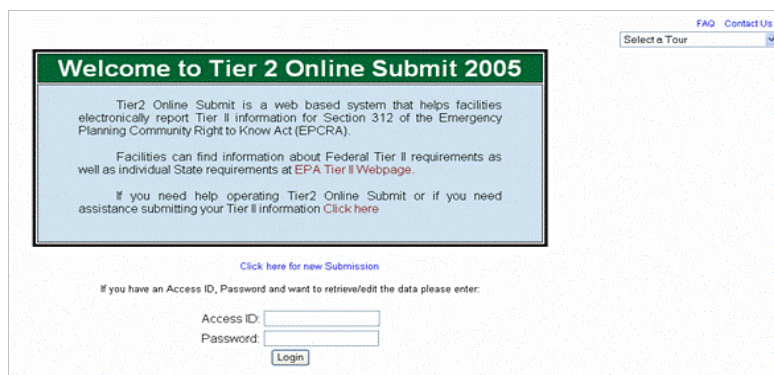
Tier2 Online Submit

Companies - Use **E-Plan Online Tier2 Submit** if you want to save time and money and trouble filing Tier II reports and make sure they get to your local First Responders.

First Responders – Do you want to always have up-to-date Tier II Reports for your facilities? Encourage your facilities to use **E-Plan Online Tier2 Submit**.

E-Plan is offering managers with responsibility for filing Tier II Reports an online system that simplifies the process for creating the Tier II submission files. Since the system is online, there is no software to download or install! The user goes to the secure web site on E-Plan, enters their company Tier II data in a secure location that is ID and password protected. The user then creates a set of Tier II zip files that can be written to CDs or printed in hard copy and filed with the appropriate state agency.

You can get started by going to <http://erplan.net/>. This is the E-Plan web site. There may be two security alerts to get there. Say OK to the first one and Yes to the second one. The E-Plan home page will appear. Ignore the login. Click on the third line in the left-hand blue side bar, which is **Tier2 Online**. You may see another Security Alert. If so, click Yes. You have arrived at the Tier2 Online Welcome screen.



On the upper right is an FAQ link. You should review this question and answer area, since some of the answers contain tours that will help you navigate through Tier2 Online. The tours, which operate somewhat like a VCR, show you how the system works.

IMPORTANT: On the upper right of the screen, you will find the “**Contact Us**” link. Please use it to report any problems or to ask questions. We will answer your inquiry as soon as possible.

If this is your first time to use the system, click on the ‘Click here for a new Submission’. If you’ve been here before and want to review or revise your data, enter your Access ID (which you have previously recorded, somewhere) and password and the system will connect to your previously entered data.

First time users will select a Password, enter their name and e-mail address and then start the data entry process. Data is entered for **emergency contact personnel, facilities, and chemicals** in those facilities. Data can be added, edited, or deleted later by returning and using the Access ID and Password.

After entering your Tier II data, you can create the files you need to send to your state. **Note that Tier2 Online does NOT make the filing for you with the state at this time.** If we have enough interest, we may add online state filing at a later date. For now, you must create the files and then send them to the state by an appropriate means to meet the statutory filing requirement of your state.

IMPORTANT: On completing your first data entry you are assigned an Access ID. You must enter this Access ID and the password you chose to access your data records. Please write down your Access ID number. You will need it each time you access your data.

Note that the data you enter in this database is available to your First Responders via the E-Plan system. Please keep the data current so that your First Responders will have the correct information when they need it.

Good luck and use the “**Contact Us**” button on the web site with your questions or comments.

E-Plan Online Training and Registration



To register for E-Plan and/or take the E-Plan online training, go to the E-Plan homepage at <http://erplan.net> and click on the "E-Plan Training & Registration".



There are two Accident Scenarios in the online Training module, based on real incidents. You can compare your response actions to these accidents on E-Plan. By comparing your response actions to the actual response actions, you can sharpen your response skills and learn more about how to use E-Plan.

And, now for a bit of humor!

(With apologies to all our Wisconsin friends – but you know these are true!)

YOU KNOW YOU ARE A TRUE WISCONSINITE WHEN:

1. Your idea of a traffic jam is ten cars waiting to pass a tractor on the highway.
2. "Vacation" means going up north past Hwy 8 for the weekend.
3. You measure distance in hours.
4. You know several people who have hit deer more than once.
5. You often switch from "heat" to "A/C" in the same day and back again.
6. Your whole family wears Green Bay Packer Green to church on Sunday.
7. You can drive 65 mph through 2 feet of snow during a raging blizzard, without flinching.
8. You see people wearing camouflage at social events (including weddings and funerals).
9. You install security lights on your house and garage and leave both unlocked.
10. You think of the major food groups as beer, fish, and venison.
11. You carry jumper cables in your car and your wife or girlfriend knows how to use them.
12. There are 7 empty cars with their engines running in the parking lot at Mill's Flee Farm at any given time.
13. You design your kid's Halloween costume to fit over a snowsuit.
14. Driving is better in the winter because the potholes are filled with snow.
15. You refer to the Green Bay Packers as "we".
16. One or more of your kids are named "Brett" or "Bart".
17. You know all 4 seasons: almost winter, winter, still winter and road construction.
18. You can identify a southern or eastern accent.
19. You have no problem pronouncing Lac Du Flambeau.
20. You consider Minneapolis exotic.
21. You know how to polka.
22. Your idea of creative landscaping is a statue of a deer next to your blue spruce.
23. You were unaware that there is a legal drinking age.
24. Down South to you means Illinois.

Contact Us ...



Send your comments and questions and suggestions to:

- **By e-mail:** jenny.wall@utdallas.edu
- **By phone:** 972-883-2631
- **By fax:** 972-883-4441
- **By mail:** University of Texas at Dallas
CyberSecurity & Emergency Preparedness Institute
Attn: E-Plan
P.O. Box 830688 WT-11
Richardson, TX 75083-0688

Read more from previous issues of the E-Plan Newsletter at
http://csepi.utdallas.edu/epc_center.htm