



STUDENT AFFAIRS
STAFF DEVELOPMENT SESSION
April 7, 2010



STAFF DEVELOPMENT SESSION • April 7, 2010

DONNA ROGERS
ASSISTANT VICE PRESIDENT FOR STUDENT AFFAIRS AND
DEAN OF STUDENTS



STAFF DEVELOPMENT SESSION • April 7, 2010

Behavior Assessment and Intervention Team (BAIT)

Policy Statement

UT Dallas is committed to providing a learning environment that is conducive for students to develop to their fullest potential. Our mission is to work collaboratively to protect, as much as possible, the health, safety and welfare of our students and the members of the University community.

Purpose

The Behavior Assessment and Intervention Team (BAIT) is an official UT Dallas team. The team consults with UT Dallas faculty and staff who are concerned about the behavior of a student who is potentially dangerous to self and/or others or is extremely disruptive or threatening.

Team Responsibilities

- Assess situations**
- Consult with administration, faculty, staff and other students**
- Coordinate the University response**
- Develop a specific strategy to manage the threatening or disruptive behavior**
- Make recommendations to responsible University officials**

Team Members

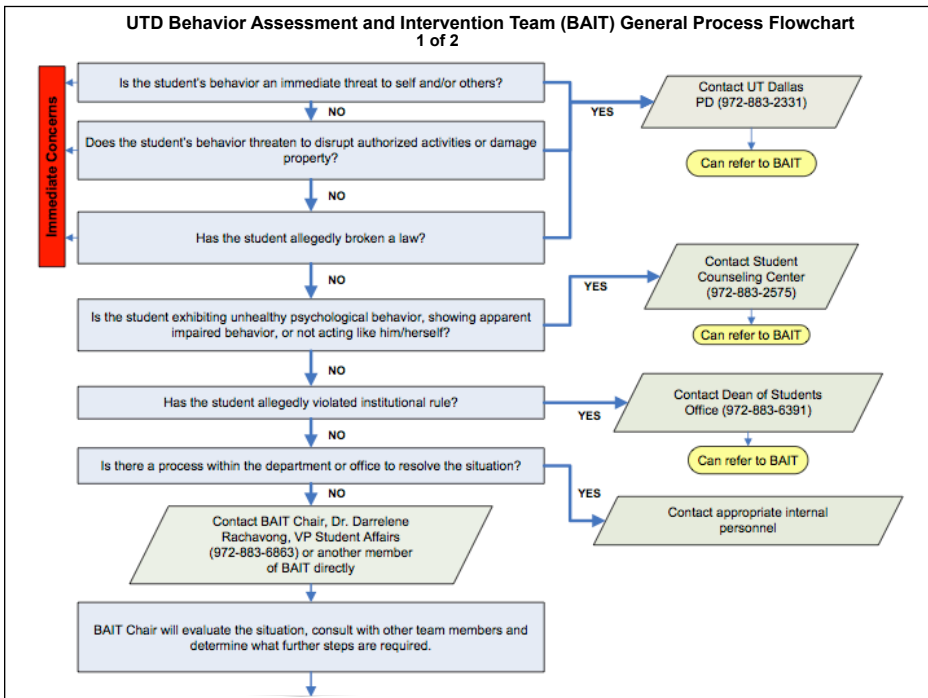
- Vice President for Student Affairs (chair)
- AVP for Student Affairs/Dean of Students
- Deans of UG Education and Graduate Studies
- UT Dallas Police Chief or designee
- Director of Student Counseling Center
- Director of Student Health Center
- Director of Women's Center
- Director of Residential Life
- Member of Educational Enhancement Staff
- Others as needed, depending on situation

Procedures

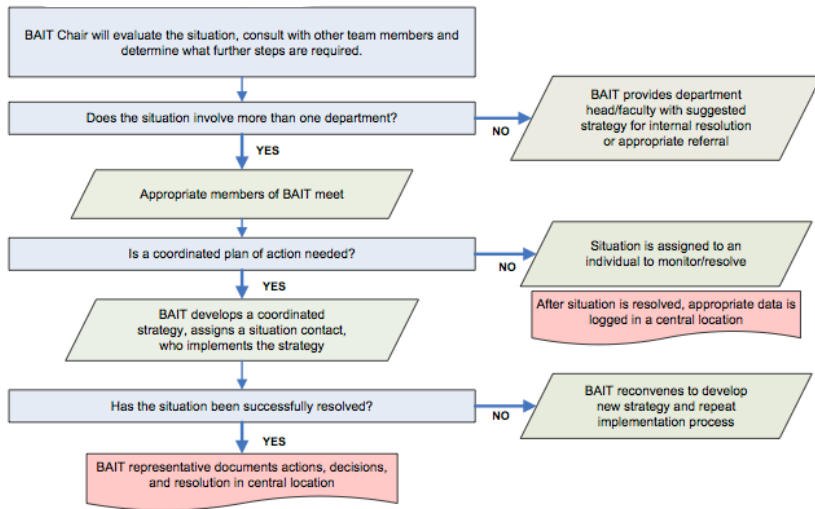
- If serious disruptive or threatening behavior, property damage, or a broken law is observed, the UTDPD should be contacted immediately (972.883.2331).
- If the violation of an institutional rule occurs, the Dean of Students should be contacted immediately (972.883.6391 – UTD Police can also contact Dean of Students if after hours or as needed).
- If the situation cannot be resolved within a specific campus department and does not seem to fit into any of the categories demanding immediate attention, the situation may be referred to the BAIT chair or any BAIT member directly.

Issues for Consideration

- Assessment of potential violence
- Evidence of mental illness as possible cause of behavior
- Containment of the behavior
- Appropriate referrals
- Setting appropriate behavior boundaries
- Other courses of action as appropriate



UTD Behavior Assessment and Intervention Team (BAIT) General Process Flowchart
2 of 2



Official BAIT Policy

The official BAIT policy may be viewed in its entirety by clicking on the following link:

utdallas.edu/bait

For more information, contact Dean of Students, Donna Rogers, @ 972.883.6391.

Parting Thoughts

Thank you for your time and attention, and remember...it takes the entire campus community (that means you) to protect, as much as possible, the health, safety and welfare of our students and each other!