

Stochastic receptivity analysis of boundary layer flowWei Ran,^{1,*} Armin Zare^{2,†}, M. J. Philipp Hack,^{3,‡} and Mihailo R. Jovanović^{4,§}¹*Department of Aerospace and Mechanical Engineering, University of Southern California, Los Angeles, California 90089, USA*²*Department of Mechanical Engineering, University of Texas at Dallas, Richardson, Texas 75080, USA*³*Center for Turbulence Research, Stanford University, Stanford, California 94305, USA*⁴*Ming Hsieh Department of Electrical and Computer Engineering, University of Southern California, Los Angeles, California 90089, USA*

(Received 19 July 2018; published 5 September 2019)

We utilize the externally forced linearized Navier-Stokes equations to study the receptivity of pre-transitional boundary layers to persistent sources of stochastic excitation. Stochastic forcing is used to model the effect of free-stream turbulence that enters at various wall-normal locations and the fluctuation dynamics are studied via linearized models that arise from locally parallel and global perspectives. In contrast to the widely used resolvent analysis that quantifies the amplification of deterministic disturbances at a given temporal frequency, our approach examines the steady-state response to stochastic excitation that is uncorrelated in time. In addition to stochastic forcing with identity covariance, we utilize the spatial spectrum of homogeneous isotropic turbulence to model the effect of free-stream turbulence. Even though locally parallel analysis does not account for the effect of the spatially evolving base flow, we demonstrate that it captures the essential mechanisms and the prevailing length scales in stochastically forced boundary layer flows. On the other hand, global analysis, which accounts for the spatially evolving nature of the boundary layer flow, predicts the amplification of a cascade of streamwise scales throughout the streamwise domain. We show that the flow structures that are extracted from a modal decomposition of the resulting velocity covariance matrix can be closely captured by conducting locally parallel analysis at various streamwise locations and over different wall-parallel wave-number pairs. Our approach does not rely on costly stochastic simulations and it provides insight into mechanisms for perturbation growth, including the interaction of the slowly varying base flow with streaks and Tollmien-Schlichting waves.

DOI: [10.1103/PhysRevFluids.4.093901](https://doi.org/10.1103/PhysRevFluids.4.093901)**I. INTRODUCTION**

Laminar-turbulent transition of fluid flows is important in many engineering applications. Predicting the point of transition requires an accurate understanding of the mechanisms that govern the physics of transitional flows. Since the 1990s, numerical simulations with various levels of fidelity have been used to uncover many essential features of the transition phenomenon. In spite of this progress, the complicated sequence of events that leads to transition and the inherent complexity

*wran@usc.edu

†armin.zare@utdallas.edu

‡mjph@stanford.edu

§mihailo@usc.edu

of the Navier-Stokes (NS) equations have hindered the development of practical control strategies for delaying transition in boundary layer flows [1–3].

It is generally accepted that the transition process can be divided into three stages: receptivity, instability growth, and breakdown [1]. In the laminar boundary layer flow, disturbances that lead to transition are amplified either through modal, i.e., exponential, instability mechanisms or nonmodal amplification, e.g., via transient growth mechanisms such as lift-up [4,5] and Orr mechanisms [6–8]. An important aspect in both scenarios is the receptivity of the boundary layer flow to external excitation sources, e.g., free-stream turbulence and surface roughness. Such sources of excitation perturb the velocity field and give rise to initial disturbances within the shear that can grow to critical levels. Depending on the amplitude and frequency of excitation, initial disturbances can take different routes to transition. For example, low-amplitude excitation of the boundary layer flow can cause the growth of two-dimensional Tollmien-Schlichting (TS) waves [9–13]. On the other hand, sufficiently high levels of broad-band excitation can induce the growth of streamwise elongated streaks that play an important role in bypass transition [2]. The effect of free-stream turbulence on the growth of boundary layer streaks has been the subject of various experimental [14–16], numerical [17,18], and theoretical [19,20] studies. In particular, it has been shown that free-stream disturbances that penetrate into the boundary layer are elongated in the streamwise direction [21]. While nonlinear dynamical models that are based on the NS equations provide insight into receptivity mechanisms, their implementation typically involves a large number of degrees of freedom and it ultimately requires direct simulations. This motivates the development of low-complexity models that are better suited for comprehensive quantitative studies.

In recent years, increasingly accurate descriptions of coherent structures in wall-bounded shear flows, e.g., Refs. [22,23], have inspired the development of reduced-order models. Such models are computationally tractable and can be trained to replicate statistical features that are estimated from experimentally or numerically generated data measurements. However, their data-driven nature is accompanied by a lack of robustness. Specifically, control actuation and sensing may significantly alter the identified modes, which introduces nontrivial challenges for model-based control design [24]. In contrast, models that are based on the linearized NS equations are less prone to such uncertainties and are, at the same time, well-suited for analysis and synthesis using tools of modern robust control. While the nonlinear terms in the NS equations play an important role in transition to turbulence and in sustaining the turbulent state, they are conservative and, as such, they do not contribute to the transfer of energy between the mean flow and velocity fluctuations but only transfer energy between different Fourier modes [25,26]. This property has inspired modeling the effect of nonlinearity using additive stochastic forcing with early efforts focused on homogeneous isotropic turbulence (HIT) [27–29]. In the presence of stochastic excitation, the linearized NS equations have been used to model heat and momentum fluxes and spatiotemporal spectra in quasi-geostrophic turbulence [30–32]. Moreover, they have been used to characterize the most detrimental stochastic forcing and determine scaling laws for energy amplification at subcritical Reynolds numbers [33–35] and to replicate structural [36,37] and statistical [38,39] features of wall-bounded turbulent flows. In these studies, stochastic forcing has been commonly used to model the impact of exogenous excitation sources and initial conditions, or to capture the effect of nonlinearity in the NS equations.

The linearized NS equations have been widely used for modal and nonmodal stability analyses of both parallel and nonparallel flows [40–42]. In parallel flows, homogeneity in the streamwise and spanwise dimensions allows for the decoupling of the governing equations across streamwise and spanwise wave numbers via Fourier transform, which results in significant computational advantages for analysis, optimization, and control. On the other hand, in the flat-plate boundary layer, streamwise and wall-normal inhomogeneity require discretization over two spatial directions and lead to models of significantly larger sizes. Conducting modal and nonmodal analyses is thus more challenging than for locally parallel flows. However, due to the slowly varying nature of the boundary layer flow, the application of a parallel flow assumption can still provide meaningful results. In this setting, primary disturbances can be identified using the eigenvalue analysis of

the Orr-Sommerfeld and Squire equations [41] and the secondary instabilities can be obtained via Floquet analysis [12,43]. Moreover, the NS equations can be parabolized to account for the downstream propagating nature of waves in slowly varying flows via spatial marching. This technique has enabled the analysis of transitional boundary layers and turbulent jet flows using various forms of the unsteady boundary-region equations [44,45], parabolized stability equations [46,47], and the more recent one-way Euler equations [48]. Furthermore, drawing on Floquet theory, the linear parabolized stability equations have also been extended to study interactions between different modes in slowly growing boundary layer flow [49].

While the parallel flow assumption offers significant computational advantages, it does not account for the effect of the spatially evolving base flow on the stability of the boundary layer. Global stability analysis addresses this issue by accounting for the spatially varying nature of the base flow and discretizing all inhomogeneous spatial directions. Previously, tools from sparse linear algebra in conjunction with iterative schemes have been employed to analyze the eigenspectrum of the governing equations and provide insight into the dynamics of transitional flows [50–54]. Efforts have also been made to conduct nonmodal analysis of spatially evolving flows including transient growth [55,56] and resolvent [57–61] analyses. In particular, for flat-plate boundary layer flow, the sensitivity of singular values of the resolvent operator to base-flow modifications and subsequent effects on the TS instability mechanism and streak amplification was investigated in Ref. [57]. The growth of flow structures in flat-plate boundary layer flow was also studied in Ref. [58] and a connection between the results from local e^N method and global resolvent analysis was established. However, previous studies did not incorporate information regarding the spatiotemporal spectrum and spatial localization of excitation sources. The widely used resolvent analysis [62–64] is limited to monochromatic forcing and, as such, may not fully capture naturally occurring sources of excitation.

The approach advanced in the present work enables the study of receptivity mechanisms in boundary layer flows subject to stochastic sources of excitation. We model the effect of free-stream turbulence as a persistent white-in-time stochastic forcing that enters at various wall-normal locations and we analyze the dynamics of velocity fluctuations around locally parallel and spatially evolving base flows using the solution to the algebraic Lyapunov equation. Our simulation-free approach enables a computationally efficient assessment of the energy spectrum of spatially evolving flows, without relying on a particular form of the inflow conditions or computation of the full spectrum of the linearized dynamical generator. Moreover, the broad-band nature of our forcing model captures the aggregate effect of all timescales without the need to integrate the frequency response over all energetically relevant frequencies.

We compare and contrast results obtained under locally parallel flow assumption with those of global analysis. Coherent structures that emerge as the response to free-stream turbulence are extracted using the modal decomposition of the steady-state velocity covariance matrix. We demonstrate how parallel and global flow analyses can be used to quantify the amplification of streamwise elongated streaks and TS waves, which are important in the laminar-turbulent transition of boundary layer flows. Our analysis shows that subordinate eigenmodes of the steady-state velocity covariance matrices that result from global flow analyses have nearly equal energetic contributions to that of the principal modes. This observation demonstrates that global covariance matrices cannot be well approximated by low-rank representations. On the other hand, we show how locally parallel analysis, which breaks up the receptivity process of the boundary layer flow over various streamwise length scales, can uncover certain flow structures that are difficult to observe in global analysis. We also demonstrate that modeling the effect of free-stream turbulence using the spectrum of HIT yields similar results as the analysis based on white-in-time stochastic excitation with identity covariance matrix. For the considered range of moderate Reynolds numbers, our results support the assumption of parallel flow in the low-complexity modeling and analysis of boundary layer flows.

The remainder of this paper is organized as follows. In Sec. II, we introduce the stochastically forced linearized NS equations and describe the algebraic Lyapunov equation that we use to compute

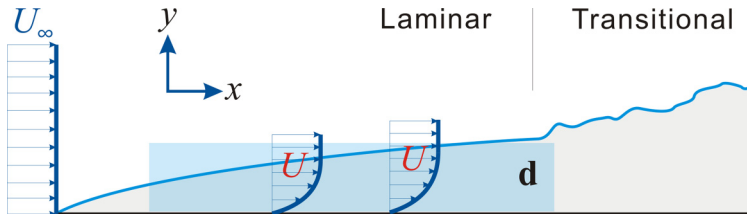


FIG. 1. Geometry of transitional boundary layer flow with stochastic excitation \mathbf{d} entering in the blue shaded region.

second-order statistics of velocity fluctuations, extract information about the energy amplification, and identify energetically dominant flow structures. In Sec. III, we study the receptivity to stochastic excitations of the velocity fluctuations around a locally parallel Blasius boundary layer profile. In Sec. IV, we extend the receptivity analysis to stochastically forced nonparallel flows. We also discuss the effect of exponentially attenuated HIT on the amplification of streaks and TS waves. In Sec. V, we compare the results of locally parallel and global analyses and examine the spatiotemporal frequency response of the linearized dynamics. We provide concluding remarks in Sec. VI.

II. STOCHASTICALLY FORCED LINEARIZED NS EQUATIONS

In a flat-plate boundary layer, the linearized incompressible NS equations around the Blasius base flow profile $\bar{\mathbf{u}} = [U(x, y) V(x, y) 0]^T$ are given by

$$\begin{aligned} \partial_t \mathbf{v} &= -(\nabla \cdot \bar{\mathbf{u}}) \mathbf{v} - (\nabla \cdot \mathbf{v}) \bar{\mathbf{u}} - \nabla p + \frac{1}{\text{Re}_0} \Delta \mathbf{v} + \mathbf{d}, \\ 0 &= \nabla \cdot \mathbf{v}, \end{aligned} \quad (1)$$

where $\mathbf{v} = [u \ v \ w]^T$ is the vector of velocity fluctuations; p denotes pressure fluctuations; u , v , and w represent components of the fluctuating velocity field in the streamwise (x), wall-normal (y), and spanwise (z) directions; and \mathbf{d} denotes an additive zero-mean stochastic body forcing. The stochastic perturbation \mathbf{d} is used to model the effect of exogenous sources of excitation on the boundary layer flow and, as illustrated in Fig. 1, it can be introduced in various wall-normal regions. In Eqs. (1), $\text{Re}_0 = U_\infty \delta_0 / \nu$ is the Reynolds number based on the Blasius length-scale $\delta_0 = \sqrt{\nu x_0 / U_\infty}$, where the initial streamwise location x_0 denotes the distance from the leading edge, U_∞ is the free-stream velocity, and ν is the kinematic viscosity. The local Reynolds number at distance x to the starting position x_0 is thus given by $\text{Re} = \text{Re}_0 \sqrt{1 + x/x_0}$. The velocities are nondimensionalized by U_∞ , spatial coordinates by δ_0 , time by δ_0 / U_∞ , and pressure by ρU_∞^2 , where ρ is the fluid density.

A. Evolution model

Elimination of the pressure yields an evolution form of the linearized equations with the state variable $\boldsymbol{\varphi} = [v \ \eta]^T$, which contains the wall-normal velocity v and vorticity $\eta = \partial_z u - \partial_x w$ [41]. In addition, homogeneity of the Blasius base flow in the spanwise direction allows a normal-mode representation with respect to z , yielding the evolution model

$$\begin{aligned} \partial_t \boldsymbol{\varphi}(x, y, k_z, t) &= [\mathbf{A}(k_z) \boldsymbol{\varphi}(\cdot, k_z, t)](x, y) + [\mathbf{B}(k_z) \mathbf{d}(\cdot, k_z, t)](x, y), \\ \mathbf{v}(x, y, k_z, t) &= [\mathbf{C}(k_z) \boldsymbol{\varphi}(\cdot, k_z, t)](x, y), \end{aligned} \quad (2)$$

which is parametrized by the spanwise wave number k_z . Definitions of the operators \mathbf{A} , \mathbf{B} , and \mathbf{C} are provided in Appendix A. We note that an additional assumption of a wall-parallel base flow

that entails $\bar{\mathbf{u}} = [U(y)00]^T$ renders the coefficients in Eqs. (1) independent of x and thus enables a normal-mode representation in that dimension as well.

We obtain finite-dimensional approximations of the operators in Eqs. (2) using a pseudospectral discretization scheme [65] in the spatially inhomogeneous directions. For streamwise-varying base flows, we consider N_x and N_y Chebyshev collocation points in x and y , and for streamwise invariant base flows we use N_y points in y . Furthermore, a change of variables is employed to obtain a state-space representation in which the kinetic energy is determined by the Euclidean norm of the state vector; see Appendix B. We thus arrive at the state-space model

$$\dot{\boldsymbol{\psi}}(t) = A\boldsymbol{\psi}(t) + B\mathbf{d}(t), \quad \mathbf{v}(t) = C\boldsymbol{\psi}(t), \quad (3)$$

where $\boldsymbol{\psi}(t)$ and $\mathbf{v}(t)$ are vectors with $2 \times N_x \times N_y$ and $3 \times N_x \times N_y$ complex-valued components, respectively ($2 \times N_y$ and $3 \times N_y$ components, respectively, for parallel flows), and state-space matrices A , B , and C incorporate the aforementioned change of variables and wave number parametrization over k_z [over (k_x, k_z) for parallel flows].

B. Second-order statistics of velocity fluctuations

We next characterize the structural dependence between the second-order statistics of the state and forcing term in the linearized dynamics. We also describe how the energy amplification arising from persistent stochastic excitation and the energetically dominant flow structures can be computed from these flow statistics. All mathematical statements in the remainder of this section are parametrized over homogeneous directions.

In statistical steady state, the covariance matrices $\Phi = \lim_{t \rightarrow \infty} \langle \mathbf{v}(t)\mathbf{v}^*(t) \rangle$ of the velocity fluctuation vector and $X = \lim_{t \rightarrow \infty} \langle \boldsymbol{\psi}(t)\boldsymbol{\psi}^*(t) \rangle$ of the state vector in Eq. (3) are related by

$$\Phi = CXC^*, \quad (4)$$

where $\langle \cdot \rangle$ denotes the expectation and superscript $*$ denotes complex conjugate transpose. The matrix Φ contains information about all second-order statistics of the fluctuating velocity field in statistical steady state, including the Reynolds stresses. We assume that the persistent source of excitation $\mathbf{d}(t)$ in Eq. (3) is zero-mean and white-in-time with spatial covariance matrix $W = W^*$,

$$\langle \mathbf{d}(t_1)\mathbf{d}^*(t_2) \rangle = W\delta(t_1 - t_2), \quad (5)$$

where δ is the Dirac δ function. When the linearized dynamics (3) are stable, the steady-state covariance X of the state $\boldsymbol{\psi}(t)$ can be determined as the solution to the algebraic Lyapunov equation

$$AX + XA^* = -BW B^*. \quad (6)$$

The Lyapunov equation (6) relates the statistics of white-in-time forcing, represented by W , to the infinite-horizon state covariance X via system matrices A and B . It can also be used to compute the energy spectrum of velocity fluctuations \mathbf{v} ,

$$E = \text{trace}(\Phi) = \text{trace}(CX C^*). \quad (7)$$

We note that the steady-state velocity covariance matrix Φ can be alternatively obtained from the spectral density matrix of velocity fluctuations $S_{\mathbf{v}}(\omega)$ as [66]

$$\Phi = \frac{1}{2\pi} \int_{-\infty}^{\infty} S_{\mathbf{v}}(\omega) d\omega.$$

For the linearized NS equations, we have

$$S_{\mathbf{v}}(\omega) := T_{\mathbf{v}\mathbf{d}}(\omega) W T_{\mathbf{v}\mathbf{d}}^*(\omega) \quad (8)$$

where the frequency response matrix

$$T_{\mathbf{v}\mathbf{d}}(\omega) = C(i\omega I - A)^{-1} B, \quad (9)$$

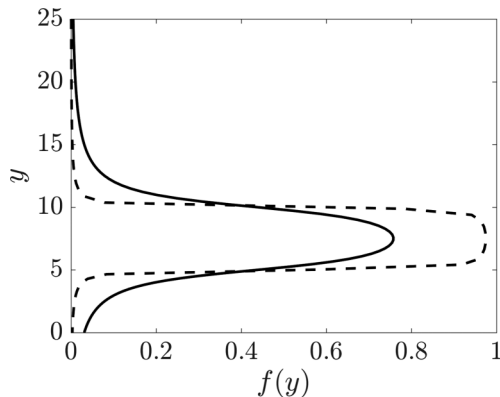


FIG. 2. The shape of the filter function $f(y)$ for $y_1 = 5, y_2 = 10$ with $a = 1$ (—) and $a = 10$ (---).

is obtained by applying the temporal Fourier transform on system (3). We note that the solution X to the algebraic Lyapunov equation (6) allows us to avoid integration over temporal frequencies and compute the energy spectrum E using (7); see Sec. VB for additional details.

Following the proper orthogonal decomposition of Refs. [67,68], the velocity field can be decomposed into characteristic eddies by determining the spatial structure of fluctuations that contribute most to the energy amplification. For turbulent channel flow, it has been shown that the dominant characteristic eddy structures extracted from second-order statistics of the stochastically forced linearized model qualitatively agree with results obtained using eigenvalue decomposition of autocorrelation matrices that are generated through Direct Numerical Simulation (DNS); see Fig. 15 in Refs. [38,68]. In addition to examining the energy spectrum of velocity fluctuations, we will use the eigenvectors of the covariance matrix Φ [defined in Eq. (4)] to study dominant flow structures that are triggered by stochastic excitation.

Remark 1. Since the linearized dynamics (3) are globally stable even when the flow is convectively unstable [40], the Lyapunov-based approach can be used to conduct the steady-state analysis of the velocity fluctuation statistics for many flow configurations that are not stable from the perspective of local analysis.

C. Filtered excitation and receptivity coefficient

Let us specify the spatial region in which the forcing enters, by introducing

$$\mathbf{d}(x, y, z, t) := f(y)h(x)\mathbf{d}_s(x, y, z, t), \quad (10)$$

where \mathbf{d}_s represents a white solenoidal forcing, $f(y)$ is a smooth filter function defined as

$$f(y) := \frac{1}{\pi}[\text{atan}(a(y - y_1)) - \text{atan}(a(y - y_2))], \quad (11)$$

and $h(x)$ is a filter function that determines the streamwise extent of the forcing. Here, y_1 and y_2 determine the wall-normal extent of $f(y)$ and a specifies the roll-off rate; Fig. 2 shows $f(y)$ with $y_1 = 5$ and $y_2 = 10$, for two cases of $a = 1$ and $a = 10$. In Secs. III and IV, we study energy amplification arising from stochastic excitation that enters at various wall-normal locations; see Table I. For the near-wall forcing with $y_1 = 0, y_2 = 5$, and $a = 1$, more than 96% of the energy of the forcing is applied within the $\delta_{0.99}$ boundary layer thickness; on the other hand, for the outer-layer forcing with $y_1 = 15, y_2 = 20$, and $a = 1$, less than 0.1% is applied in that region. Our study mainly focuses on the forcing with $h(x) = 1$; the effect of changing the function h is considered in Sec. IV A.

TABLE I. Cases of stochastic excitation entering at various wall-normal regions.

Case number	Wall-normal region of excitation; $[y_1, y_2]$ in Eq. (11)
1 (near-wall)	[0, 5]
2	[5, 10]
3	[10, 15]
4 (outer-layer)	[15, 20]

We quantify the receptivity of velocity fluctuations to stochastic forcing that enters at various wall-normal regions using the receptivity coefficient

$$C_R := \frac{\lim_{t \rightarrow \infty} \langle (D_g \mathbf{v}(t))^* D_g \mathbf{v}(t) \rangle}{\lim_{t \rightarrow \infty} \langle \mathbf{d}^*(t) \mathbf{d}(t) \rangle} = \frac{\text{trace}(D_g \Phi D_g^*)}{\text{trace}(W)}, \quad (12)$$

which determines the ratio of the energy of velocity fluctuations within the boundary layer to the energy of the forcing. Here, $D_g := g(x, y)I$, where the function $g(x, y)$ is a top-hat filter that extracts velocity fluctuations within the $\delta_{0.99}$ boundary layer thickness. In parallel flows, the function g is invariant with respect to the streamwise direction.

III. RECEPTIVITY ANALYSIS OF LOCALLY PARALLEL FLOW

We first examine the dynamics of the stochastically forced Blasius boundary layer under the locally parallel flow assumption. In this case, the base flow only depends on the wall-normal coordinate y and evolution model (3) is parametrized by horizontal wave numbers (k_x, k_z) , which significantly reduces the computational complexity. We perform an input-output analysis to quantify the energy amplification of velocity fluctuations subject to free-stream turbulence.

We compute the energy spectrum of stochastically excited parallel Blasius boundary layer flow with $\text{Re}_0 = 232$ (the Blasius length scale is $\delta_0 = 1$). Here, we consider a wall-normal region with $L_y = 35$ and discretize the differential operators in Eqs. (2) using $N_y = 100$ Chebyshev collocation points in y . In the wall-normal direction, homogenous Dirichlet boundary conditions are imposed on wall-normal vorticity, $\eta(0) = \eta(L_y) = 0$ and Dirichlet-Neumann boundary conditions are imposed on wall-normal velocity, $v(0) = v(L_y) = 0$, $v_y(0) = v_y(L_y) = 0$, where v_y denotes the derivative of v with respect to y . In the horizontal directions, we use 50×51 logarithmically spaced wave numbers with $k_x \in [10^{-4}, 1]$ and $k_z \in [5 \times 10^{-3}, 10]$ to parametrize the linearized model (3). Thus, for each pair (k_x, k_z) , the state $\boldsymbol{\psi} = [v^T \eta^T]^T$ is a complex-valued vector with $2N_y$ components. Grid convergence has been verified by doubling the number of points used in the discretization of the differential operators in the wall-normal coordinate.

We first consider a streamwise invariant ($h(x) = 1$) solenoidal white-in-time excitation \mathbf{d} with covariance $W = I$ in the immediate vicinity of the wall (case 1 in Table I). Figure 3(a) shows largest receptivity at low streamwise wave numbers ($k_x \approx 0$) with a global peak at $k_z \approx 0.25$. This indicates that streamwise elongated streaks are the dominant flow structures that result from persistent stochastic excitation of the boundary layer flow. Such streamwise elongated structures are reminiscent of energetically dominant streaks with spanwise wave numbers $k_z \approx 0.26$ that were identified in analyses of optimal disturbances [69,70]. Slightly smaller spanwise wave numbers have been recorded from hot-wire signal correlations in the boundary layer subject to free-stream turbulence [14]. In addition to streaks, Fig. 3(a) also predicts the emergence of TS waves at $k_x \approx 0.19$. For outer-layer forcing, the amplification of streamwise elongated structures persists while the amplification of the TS waves weakens; see Fig. 3(b). It is also observed that as the region of excitation moves away from the wall, energy amplification becomes weaker and the peak of the receptivity coefficient shifts to lower values of k_z . As we demonstrate in Sec. IV, these observations are in agreement with the global receptivity analysis of stochastically excited boundary layer flow.

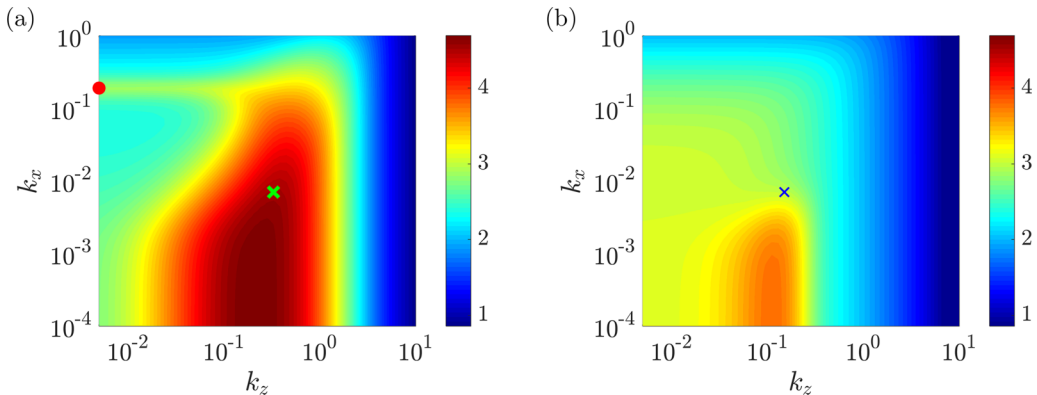


FIG. 3. Plots of $\log_{10}(C_R(k_x, k_z))$ in the parallel Blasius boundary layer flow with $\text{Re}_0 = 232$ subject to (a) near-wall and (b) outer-layer white-in-time stochastic excitation. The dot and crosses respectively mark the wave-number pairs associated with TS waves and streaks that are closely examined in this paper.

As noted in Sec. II B, the solution X to Lyapunov equation (6) represents the steady-state (i.e., long-time average) covariance matrix of the state ψ of the stochastically forced linearized evolution model (3), which can be used to compute the energy spectrum in Eq. (7) and the receptivity coefficient in Eq. (12) in a simulation-free manner. To verify the values of C_R reported in Fig. 3, we conduct stochastic simulations of the forced linearized flow equations at the wave-number pair $(k_x, k_z) = (0.19, 0.005)$, which is marked by the red dot in Fig. 3(a). This wave-number pair allows us to examine the amplification of TS waves identified in Fig. 3(a). Since proper comparison with the result of the Lyapunov equation requires ensemble averaging, rather than comparison at the level of individual stochastic simulations, we have conducted 20 simulations of system (3). The total simulation time was set to 1.6×10^4 dimensionless time units. Figure 4 shows the time evolution of C_R for 20 realizations of white-in-time forcing \mathbf{d} to system (3). The receptivity coefficient averaged over all simulations is marked by the thick black line. The results indicate that the average of the sample sets asymptotically approaches the correct steady-state value of $C_R = 10^{2.85}$ (cf. Fig. 4).

The one-dimensional energy spectrum presented in Fig. 5(a) quantifies the energy amplification E over various spanwise wave numbers when forcing enters at different distances from the wall. This quantity can be computed by integrating the energy spectrum $E(k_x, k_z)$ [cf. Eq. (7)] over streamwise wave numbers. In Fig. 5, the locations at which the energy spectrum peaks correspond

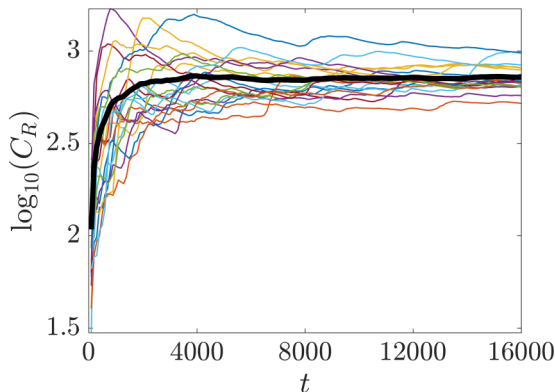


FIG. 4. Time evolution of the receptivity coefficient C_R for 20 realizations of near-wall stochastic forcing to linearized dynamics (3) with $(k_x, k_z) = (0.19, 0.005)$ and $\text{Re}_0 = 232$. The receptivity coefficient averaged over all simulations is marked by the thick black line.

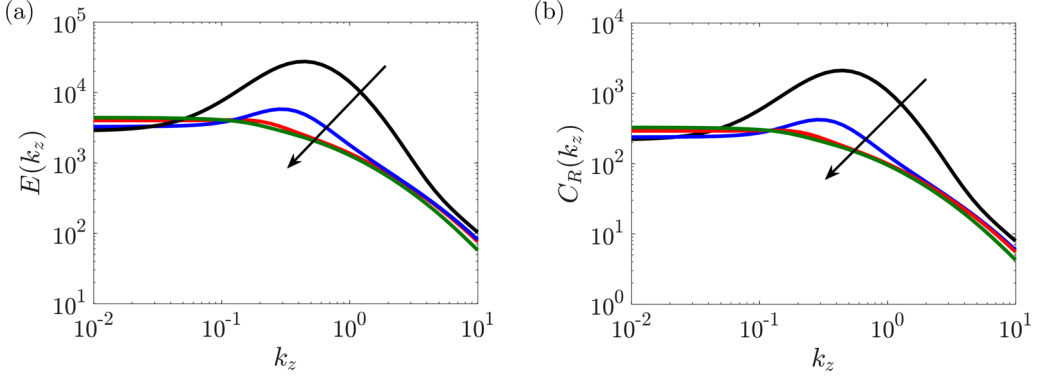


FIG. 5. (a) The one-dimensional energy spectrum, and (b) the receptivity coefficient for the parallel Blasius boundary layer flow with $\text{Re}_0 = 232$ subject to white stochastic excitation entering in the wall-normal regions covered in Table I: case 1, black; case 2, blue; case 3, red; and case 4, green. The forcing region moves away from the wall in the direction of the arrows.

to the spanwise scale associated with streamwise elongated streaks. When the forcing region shifts away from the wall, the energy amplification decreases, indicating that the flow region in the immediate vicinity of the wall is more susceptible to external excitation. As mentioned earlier, we also observe that, when the forcing region shifts upward, the boundary layer streaks become wider in the spanwise direction. Figure 5(b) shows similar trends in the receptivity coefficient as a function of spanwise wave number k_z , which is computed by integrating C_R presented in Fig. 3 over streamwise wave numbers.

The eigenvalue decomposition of the velocity covariance matrix Φ can be used to identify the energetically dominant flow structures resulting from stochastic excitation. In particular, symmetries in the wall-parallel directions can be used to express velocity components as

$$\begin{aligned}
 u_j(x, z, t) &= 4 \cos(k_z z) \Re \{ \tilde{u}_j(k_x, k_z) e^{ik_x x} \}, \\
 v_j(x, z, t) &= 4 \cos(k_z z) \Re \{ \tilde{v}_j(k_x, k_z) e^{ik_x x} \}, \\
 w_j(x, z, t) &= -4 \sin(k_z z) \Im \{ \tilde{w}_j(k_x, k_z) e^{ik_x x} \},
 \end{aligned} \tag{13}$$

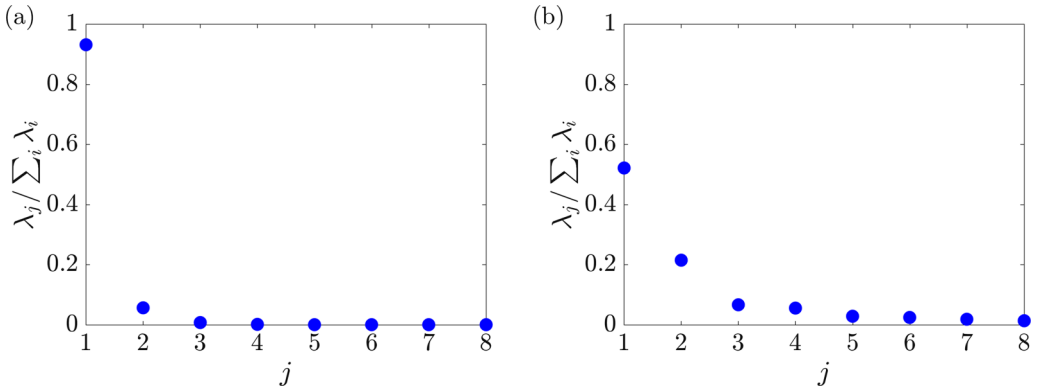


FIG. 6. Contribution of the first eight eigenvalues of the velocity covariance matrix Φ of the Blasius boundary layer flow with $\text{Re}_0 = 232$ subject to (a) near-wall and (b) outer-layer white-in-time stochastic forcing.

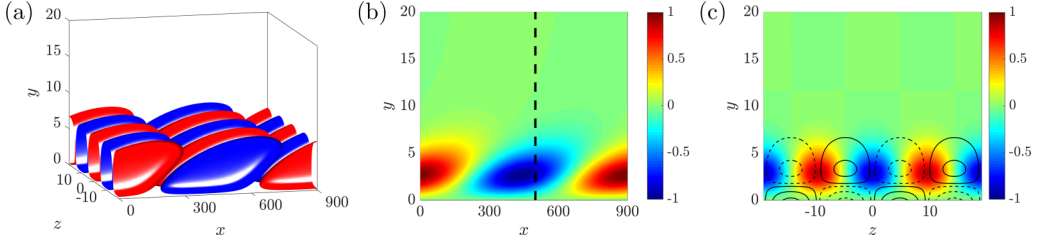


FIG. 7. Principal modes with $(k_x, k_z) = (7 \times 10^{-3}, 0.32)$, resulting from excitation of the boundary layer flow with $\text{Re}_0 = 232$ in the vicinity of the wall. (a) Streamwise velocity component where red and blue colors denote regions of high and low velocity. (b) Streamwise velocity at $z = 0$. (c) y - z slice of streamwise velocity (color plots) and vorticity (contour lines) at $x = 500$, which corresponds to the cross-plane slice indicated by the black dashed lines in panel (b).

Here, \Re and \Im denote real and imaginary parts, and \tilde{u}_j , \tilde{v}_j , and \tilde{w}_j correspond to the streamwise, wall-normal, and spanwise components of the j th eigenvector of the matrix Φ in Eq. (4). While all amplitudes have been normalized, the phases of these components have been modulated to ensure the compactness of $v_j(x, y, z)$ around $z = 0$ [68]; see Ref. [[38], Appendix F] for additional details.

While the sum of all eigenvalues of the matrix Φ determines the overall energy amplification reported in Fig. 5(a), it is also useful to examine the spatial structure of modes with dominant contribution to the energy of the flow. Figure 6 shows the contribution of the first eight eigenvalues of Φ to the energy amplification, $\lambda_j / \sum_i \lambda_i$, when the boundary layer flow is subject to stochastic forcing. For fluctuations with $(k_x, k_z) = (7 \times 10^{-3}, 0.32)$ and near-wall excitation [cross in Fig. 3(a)], the principal mode which corresponds to the largest eigenvalue contains approximately 93% of the total energy. On the other hand, for fluctuations with $(k_x, k_z) = (7 \times 10^{-3}, 0.15)$ and outer-layer excitation [cross in Fig. 3(b)], the principal mode contains approximately 52% of the total energy. Figures 7 and 8 show the flow structures associated with the streamwise component of these most significant modes. From Figs. 7(b) and 8(b), it is evident that the core of streamwise elongated structures moves away from the wall with the shift of the stochastically excited region. These streamwise elongated structures are situated between counter-rotating vortical motions in the cross-stream plane [cf. Figs. 7(c) and 8(c)] and contain alternating regions of fast- and slow-moving fluid, which are slightly inclined (and detached) relative to the wall. Even though these structures do not capture the full complexity of transitional flow, as we show in Sec. IV, they contain information about energetic streamwise elongated flow structures that are amplified by external excitation of the boundary layer flow. In particular, such alignment of counter-rotating vortices and streaks is closely related to the lift-up mechanism and the generation of streamwise elongated streaks [69–71].

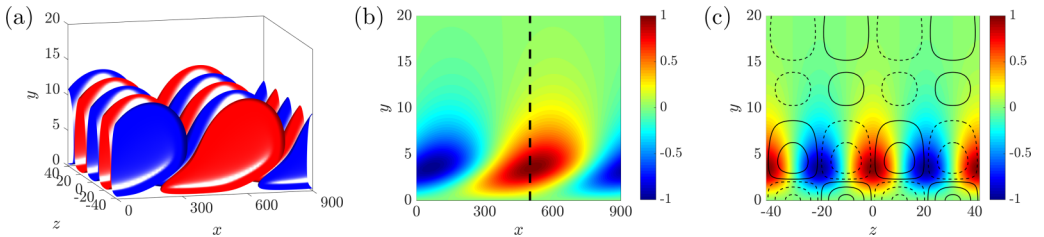


FIG. 8. Principal modes with $(k_x, k_z) = (7 \times 10^{-3}, 0.15)$, resulting from outer-layer excitation of the boundary layer flow with $\text{Re}_0 = 232$. (a) Streamwise velocity component where red and blue colors denote regions of high and low velocity. (b) Streamwise velocity at $z = 0$. (c) y - z slice of streamwise velocity (color plots) and vorticity (contour lines) at $x = 500$, which corresponds to the cross-plane slice indicated by the black dashed lines in panel (b).

IV. GLOBAL ANALYSIS OF STOCHASTICALLY FORCED LINEARIZED NS EQUATIONS

The parallel flow assumption applied in Sec. III allows for the efficient parametrization of the governing equations over all wall-parallel wave numbers k_x and k_z . While this significantly reduces computational complexity, it excludes the effect of the spatially evolving base flow on the dynamics of velocity fluctuations. In global stability analysis, the NS equations are linearized around a spatially evolving Blasius boundary layer profile and the finite-dimensional approximation is obtained by discretizing all inhomogeneous spatial directions. In this section, we employ global receptivity analysis to quantify the influence of stochastic excitation on the velocity fluctuations around the spatially evolving Blasius base flow.

At any spanwise wave number k_z , the state $\psi = [v^T \ \eta^T]^T$ of linearized evolution model (3) is a complex vector with $2 \times N_x \times N_y$ components, where N_x and N_y denote the number of collocation points used to discretize the differential operators in the streamwise and wall-normal directions, respectively. While this choice of state variables is not commonly used in conventional global stability analysis of boundary layer flows, in Appendix C we demonstrate that it yields consistent results with the descriptor form in which the state is determined by all velocity and pressure fluctuations. We consider a Reynolds number $\text{Re}_0 = 232$ and a computational domain with $L_x = 900$ and $L_y = 35$ (boundary layer thickness $\delta_{0.99}$ grows from 5 to 11), where the differential operators are discretized using $N_x = 101$ and $N_y = 50$ Chebyshev collocation points in x and y , respectively. Similar to locally parallel analysis, we verify convergence by doubling the number of grid points.

As in Sec. III, in the wall-normal direction we enforce homogenous Dirichlet boundary conditions on η and homogeneous Dirichlet and Neumann boundary conditions on v . At the inflow, we impose homogeneous Dirichlet boundary conditions on η , i.e., $\eta(0, y) = 0$, and homogeneous Dirichlet and Neumann boundary conditions on v , i.e., $v(0, y) = v_y(0, y) = 0$. At the outflow, we apply linear extrapolation conditions on both state variables (v, η) and the wall-normal derivative of the first component [72],

$$\begin{aligned} v(x(N_x), y) &= \alpha v(x(N_x - 1), y) + \beta v(x(N_x - 2), y), \\ \eta(x(N_x), y) &= \alpha \eta(x(N_x - 1), y) + \beta \eta(x(N_x - 2), y), \\ v_y(x(N_x), y) &= \alpha v_y(x(N_x - 1), y) + \beta v_y(x(N_x - 2), y), \\ \alpha &= \frac{x(N_x) - x(N_x - 2)}{x(N_x - 1) - x(N_x - 2)}, \quad \beta = \frac{x(N_x - 1) - x(N_x)}{x(N_x - 1) - x(N_x - 2)}. \end{aligned}$$

We also introduce sponge layers at the inflow and outflow to mitigate the influence of boundary conditions on the fluctuation dynamics within the computational domain [52,73]; see Ref. [74] for an in-depth study on the effect of sponge layer strength in the global stability analysis of boundary layer flow. The results presented in this section are obtained after adjusting the sponge layer parameters to match the energy amplification obtained via the descriptor form of the linearized dynamics; see Appendix C for details.

For boundary layer flows, the global operator in Eqs. (3) has no exponentially growing eigenmodes [40]; see Remark 1. Thus, the steady-state covariance of the fluctuating velocity field can be obtained from the solution to Lyapunov equation (6) and the energy amplification can be computed using Eq. (7). As in Sec. III, we examine the influence of streamwise-invariant ($h(x) = 1$) white-in-time stochastic forcing with covariance $W = I$ which enters at various wall-normal regions; this is achieved by filtering the forcing using the function $f(y)$ in (11). Figure 9 shows the k_z dependence of energy amplification and receptivity coefficient for stochastic excitation entering at various wall-normal regions. Our computations show that the energy amplification increases as the region of influence for the external forcing approaches the wall, which qualitatively matches the result of the locally parallel analysis in Sec. III. In particular, for $\text{Re}_0 = 232$, the energy amplification reduces from 2.0×10^6 (for stochastic excitation that enters in the vicinity of the wall (case 1 in Table I) with $k_z = 0.32$) to 9.6×10^4 (for stochastic excitation that enters away from

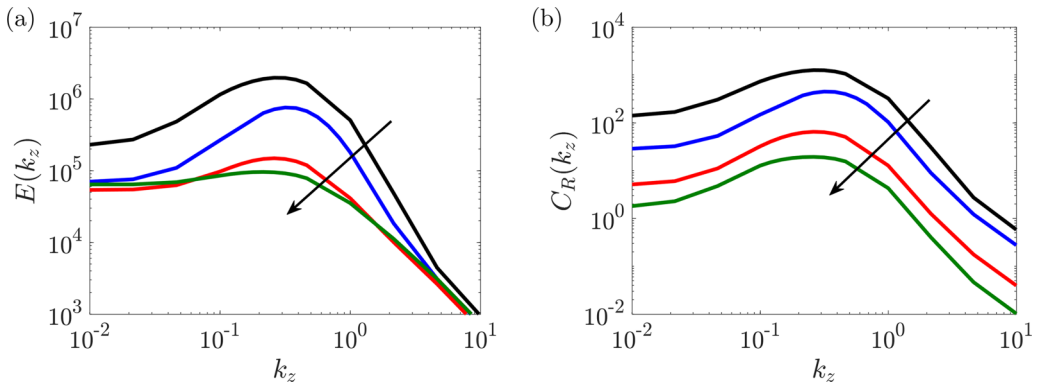


FIG. 9. (a) Energy amplification and (b) receptivity coefficient resulting from stochastic excitation of the linearized NS equations around a spatially varying Blasius profile with $\text{Re}_0 = 232$. Stochastic forcing enters at the wall-normal regions covered in Table I: case 1, black; case 2, blue; case 3, red; and case 4, green. The forcing region moves away from the wall in the direction of the arrows.

the wall (case 4 in Table I) with $k_z = 0.21$). Moreover, the structures that correspond to the largest energy amplification or receptivity coefficient become slightly wider in the spanwise direction, but this shift to smaller values of k_z is not as pronounced as in parallel flows (cf. Fig. 5). The largest energy amplification and receptivity are observed for structures with $k_z \in [0.21, 0.32]$, which is in close agreement with previous experimental [14] and theoretical studies [69,70].

For $k_z = 0.32$, Fig. 10 shows the contribution of the first 50 eigenvalues of the velocity covariance matrix Φ resulting from near-wall and outer-layer stochastic excitation. In contrast to locally parallel analysis (cf. Fig. 6), we observe that other eigenvalues play a more prominent role. The implication is that in global analysis the principal eigenmode of Φ cannot capture the full complexity of the spatially evolving flow. Nevertheless, we examine the shape of such flow structures to gain insight into the effect of stochastic excitation on the eigenmodes of the covariance matrix Φ that comprise the fluctuation field. Figures 11(a) and 12(a) show the spatial structure of the streamwise component of the principal response to white-in-time stochastic forcing that enters in the vicinity of the wall and in the outer layer, respectively. The streamwise growth of the streaks can be observed. Figures 11(b) and 12(b) display the cross section of these streamwise elongated structures at $z = 0$. As the forcing

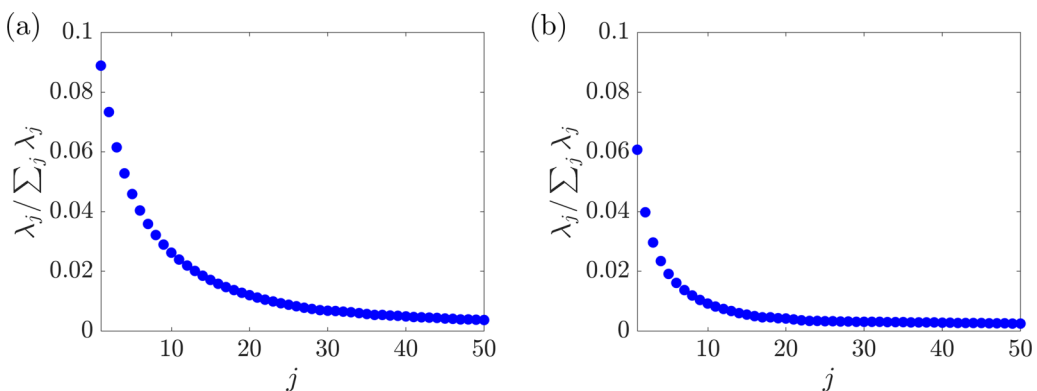


FIG. 10. Contribution of the first 50 eigenvalues of the velocity covariance matrix Φ of the Blasius boundary layer flow with $\text{Re}_0 = 232$ subject to white-in-time stochastic forcing (a) in the vicinity of the wall with spanwise wave number $k_z = 0.32$ and (b) away from the wall with spanwise wave number $k_z = 0.21$.

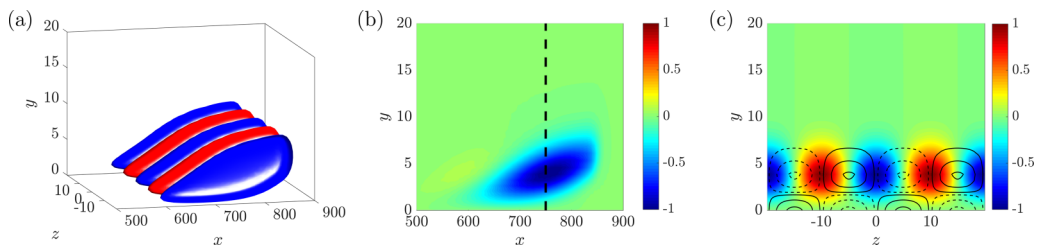


FIG. 11. Principal modes with $k_z = 0.32$, resulting from near-wall excitation of the boundary layer flow (case 1 in Table I) with $Re_0 = 232$. (a) Streamwise velocity component where red and blue colors denote regions of high and low velocity. (b) Streamwise velocity at $z = 0$. (c) y - z slice of streamwise velocity (color plots) and vorticity (contour lines) at $x = 750$, which corresponds to the cross-plane slice indicated by the black dashed lines in panel (b).

region gets detached from the wall, the cores of the streaky structures also move away from it. As shown in Figs. 11(c) and 12(c), these streaky structures are situated between counter-rotating vortical motions in the cross-stream plane and they contain alternating regions of fast- and slow-moving fluid that are slightly inclined to the wall.

We next examine the spatial structure of less energetic eigenmodes of Φ . As illustrated in Fig. 10(a), for near-wall stochastic forcing the first six eigenmodes respectively contribute 8.9%, 7.3%, 6.1%, 5.3%, 4.6%, and 4.0% to the total energy amplification. We again use the streamwise velocity component to study the spatial structure of the corresponding eigenmodes. As shown in Fig. 13(b), while the principal mode consists of a single streamwise-elongated streak, the second mode is composed of two shorter high- and low-speed streaks. Similarly, the third and fourth modes respectively contain three and four streaks. These streaks become shorter in the streamwise direction and their energy content reduces; see Figs. 13(c) and 13(d). As the mode number increases, the streamwise extent of these structures further reduces, they appear at an earlier streamwise location, and their peak value moves closer to the leading edge. This breakup into shorter streaks for higher modes can be related to the dominant modes identified in locally parallel analysis for increasingly larger streamwise wave numbers and at various streamwise locations.

As shown in Fig. 13, spatial visualization of various eigenmodes of Φ resulting from global receptivity analysis uncovers approximately periodic flow structures in the streamwise direction. The fundamental spatial frequency extracted from the streamwise variation of the principal eigenmode of Φ provides information about the streamwise length scales associated with the dominant flow structures. Figure 14(a) shows the dominant TS wave-like spatial structure that results from near-wall stochastic excitation of the boundary layer flow with $Re_0 = 232$ and $k_z = 0.01$. The Fourier

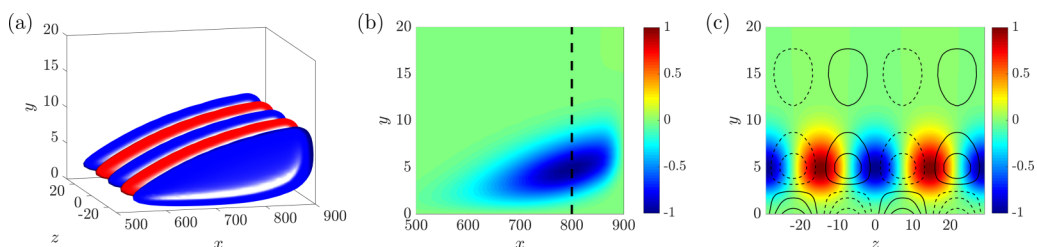


FIG. 12. Principal modes with $k_z = 0.21$, resulting from outer-layer excitation of the boundary layer flow (case 4 in Table I) with $Re_0 = 232$. (a) Streamwise velocity component where red and blue colors denote regions of high and low velocity. (b) Streamwise velocity at $z = 0$. (c) y - z slice of streamwise velocity (color plots) and vorticity (contour lines) at $x = 800$, which corresponds to the cross-plane slice indicated by the black dashed lines in panel (b).

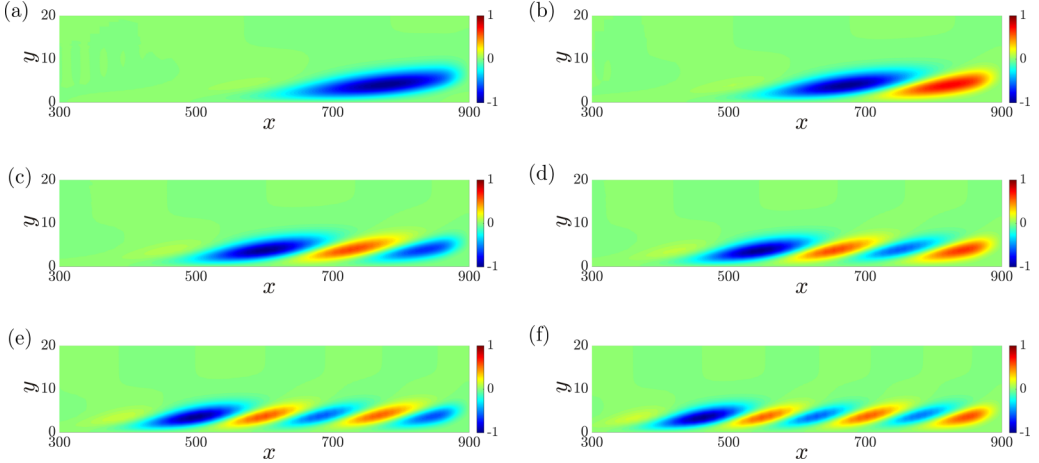


FIG. 13. Streamwise velocity at $z = 0$ corresponding to the first six eigenmodes of the steady-state covariance matrix Φ resulting from near-wall excitation of the boundary layer flow with $\text{Re}_0 = 232$ and at $k_z = 0.32$: (a) $j = 1$, (b) $j = 2$, (c) $j = 3$, (d) $j = 4$, (e) $j = 5$, and (f) $j = 6$, where j corresponds to ordering in Fig. 10(a).

transform in the streamwise direction can be used to extract the fundamental value of k_x associated with this spatial structure. As illustrated in Fig. 14(b), the Fourier coefficient peaks at $k_x \approx 0.1$, which corresponds to the most significant streamwise flow structures [cf. Fig. 14(a)]. The identified fundamental wave number is representative of the streamwise variation of this flow structure and it provides a good approximation of the dominant value of k_x that is excited by the near-wall forcing. For different values of k_z , the filled black dots in Fig. 14(c) denote the streamwise wave numbers extracted from the principal eigenmodes of the covariance matrix Φ , which contribute most to the energy amplification. The circles represent the tail of streamwise wave numbers extracted from other eigenmodes of the matrix Φ . As shown in Fig. 13, for any k_z , less significant eigenmodes are associated with flow structures that are shorter in the streamwise direction. The observed trends are in close agreement with the results obtained from locally parallel analysis [cf. Fig. 3(a)]. In particular, streamwise elongated structures are most amplified for $k_z \approx 0.3$. On

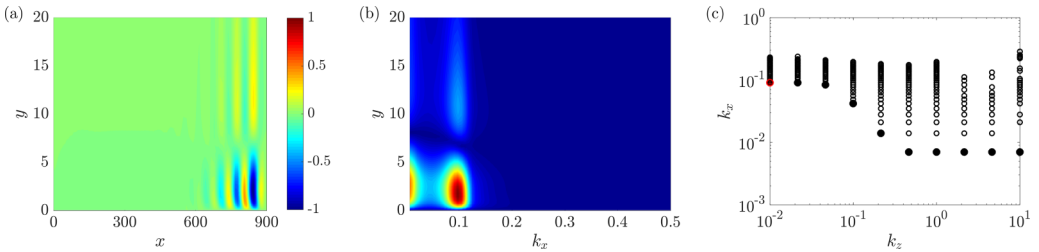


FIG. 14. Blasius boundary layer flow with initial Reynolds number $\text{Re}_0 = 232$ subject to white-in-time stochastic excitation of the near-wall region (case 1 in Table I). (a) The TS wave-like spatial structure of the streamwise velocity component of the principal eigenmode of the matrix Φ at $k_z = 0.01$; (b) Fourier transform in streamwise dimension; and (c) the distribution of streamwise length scales obtained from various eigenmodes of the covariance matrix Φ for various values of the spanwise wave number k_z . Filled dots represent the dominant streamwise wave number associated with the principal eigenmode of Φ , the red dot corresponds to the fundamental wave number extracted from panel (b), and circles are the streamwise wave numbers resulting from less significant eigenmodes.

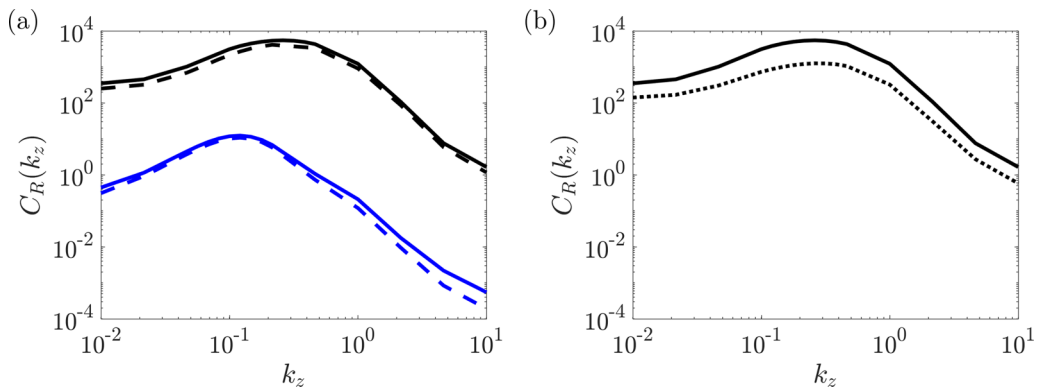


FIG. 15. (a) Receptivity coefficient resulting from HIT-based stochastic excitation of system (3) with $Re_0 = 232$ in the near-wall (black) and outer-layer (blue) regions. The solid lines correspond to streamwise-invariant forcing [$r = 0$ in $h(x)$] and the dashed lines correspond to streamwise decaying forcing with a decay rate of $r = 1.5$ in $h(x)$. (b) Receptivity coefficient corresponding to the streamwise-invariant [$r = 0$ in $h(x)$] HIT-based forcing (solid) and white-in-time forcing with covariance $W = I$ (dotted) entering in the near-wall region.

the other hand, for low spanwise wave numbers, the TS wave-like structures are most amplified for $k_x \gtrsim 0.1$ [cf. $k_x \approx 0.19$ from locally parallel analysis in Fig. 3(a)].

A. Modeling the effect of homogeneous isotropic turbulence

So far, we have studied the energy amplification of the boundary layer flow subject to persistent white-in-time stochastic excitation with a trivial covariance matrix, $W = I$. It is also of interest to model the effect of free-stream turbulence on the boundary layer flow using homogeneous isotropic turbulence (HIT) [18]. The spectrum of HIT has been previously used as an initial condition to study transient growth in boundary layer flows based on the temporal evolution of the solution to the differential Lyapunov equation [75]. Herein, we consider the persistent stochastic forcing \mathbf{d} in system (3) to be of the form defined in Eq. (10). The filter function $h(x) := 10^{-rx/L_x}$ is used to model the streamwise decay of turbulence intensity (cf. Ref. [[18], Fig. 2]) and the spatial covariance matrix W of the forcing term \mathbf{d}_s is selected to match the spectrum of HIT; see Appendix D for additional details. We utilize such forcing model as well as the input matrix B in the infinite-horizon Lyapunov equation (6) to compute the steady-state covariance matrix X and determine the corresponding energy spectrum via Eq. (7).

We first study the receptivity of the linearized NS equations to HIT-based stochastic forcing. The receptivity coefficient as a function of spanwise wave number k_z is shown in Fig. 15(a). As shown in this figure, the streamwise decay of forcing using the filter function $h(x) = 10^{-rx/L_x}$ has a minimal damping effect on the receptivity coefficient. Figure 15(b) illustrates a similar trend in the receptivity coefficient obtained from both types of white-in-time stochastic forcing, which suggests that stochastic forcing with covariance $W = I$ provides a reasonable approximation of the effect of HIT. However, it is clear that the boundary layer flow is more receptive to the scale-dependent distribution of energy (von Kármán spectrum) realized by the HIT-based forcing.

Figure 16 shows the streamwise component of the principal eigenmodes of the velocity covariance matrix Φ resulting from near-wall HIT-based excitation of the boundary layer flow with $k_z = 0.26$. The flow structures closely resemble the streamwise elongated streaks presented in Fig. 11(b). From Fig. 16(b), we conclude that an exponentially decaying excitation further elongates the streaks in the streamwise direction. We note that the amplification of streaks and their prominence in the downstream regions persists, even if the streamwise-decaying forcing completely vanishes towards the end of the domain. Figure 17 shows the dominant flow structure

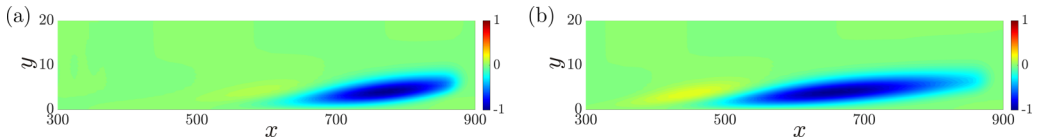


FIG. 16. The x - y slice of the streamwise component of the principal eigenmode from the covariance matrix Φ at $k_z = 0.26$ resulting from near-wall HIT-based excitation of the boundary layer flow with $\text{Re}_0 = 232$. (a) Streamwise-invariant forcing [$r = 0$ in $h(x)$] and (b) streamwise-decaying forcing [$r = 1.5$ in $h(x)$].

that results from near-wall HIT-based forcing of the boundary layer flow with $k_z = 0.01$. This figure demonstrates that our stochastic analysis is able to predict the amplification of TS wave-like structures arising from persistent excitation that matches the spectrum of HIT, which is in agreement with the global stability analysis of Ref. [51]. In contrast, similar stochastic analysis of the parallel flow dynamics fails to capture such structures; see Ref. [76] for the predictions resulting from locally parallel analysis.

Figure 18 illustrates the growth of the root-mean-square (rms) amplitude of the streamwise velocity resulting from HIT-based stochastic forcing with various streamwise decay rates: $r = 0, 0.5, 1, \text{ and } 1.5$. This figure is obtained by integrating the steady-state response over 50 logarithmically spaced spanwise wave numbers with $0.01 < k_z < 10$. When the forcing is not damped ($r = 0$), the growth is linear and proportional to the Reynolds number for $\text{Re} < 400$, which is in agreement with previous studies based on linear stability theory [69,77]. We observe that this linear trend is no longer present for stochastic forcing with large streamwise decay rates r .

V. DISCUSSION

In this section, we provide connections between the spatial flow structures obtained via locally parallel and global analyses and examine frequency responses of the boundary layer flow subject to near-wall stochastic excitation.

A. Relations between locally parallel and global analyses

The eigenmodes resulting from locally parallel and global stability analysis are generally closely related [40,51]. As shown in the previous sections, both locally parallel and global receptivity analyses predict largest amplification of streamwise elongated structures and the appearance of TS waves. However, the size of flow structures and their wall-normal extent can vary with the streamwise location (Reynolds number). For a proper comparison between the streamwise and wall-normal extent of flow structures, herein, we adjust the Reynolds number used in locally parallel analysis to capture the dominant flow structures toward the end of the global streamwise domain. Moreover, a shorter global domain length L_x should be considered to accommodate subcritical Reynolds numbers ($\text{Re} \lesssim 360$) beyond which the local dynamics are unstable. Even though the global dynamics are stable, the discretized representation can have spurious unstable modes that can be avoided by increasing the computational domain. We extend the streamwise domain in the

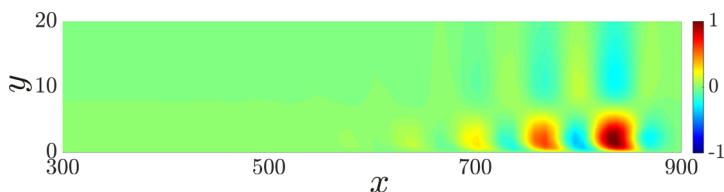


FIG. 17. The TS wave-like spatial structure of the streamwise component of the principal eigenmode of matrix Φ at $k_z = 0.01$ resulting from global analysis of the boundary layer flow subject to near-wall streamwise-invariant [$r = 0$ in $h(x)$] HIT-based stochastic forcing.

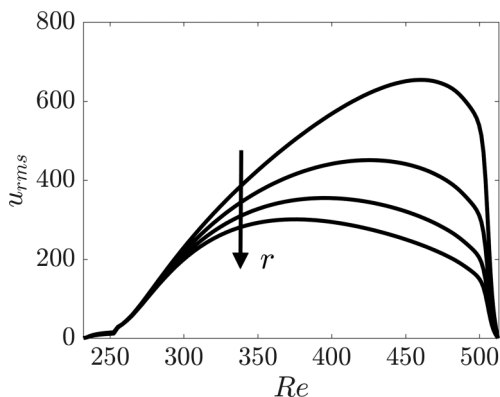


FIG. 18. The rms amplitude of the streamwise velocity resulting from stochastic excitation that corresponds to the spectrum of HIT entering in the near-wall region (case 1 in Table I). The decay rate for the intensity of stochastic forcing, r , increases in the direction of the arrow as $r = 0, 0.5, 1$, and 1.5 .

upstream direction to $Re_0 = 133$, but for consistency, display results for $Re \geq 232$ after appropriate scaling based on the Blasius length scale at $Re = 232$.

For near-wall stochastic excitation (case 1 in Table I), both local and global receptivity analyses predict the dominant amplification of streamwise elongated structures with $k_z \approx 0.3$; see Figs. 5 and 9. For near-wall excitation with $k_z = 0.32$, Fig. 19 demonstrates that locally parallel analysis of the flow with $Re = 300$ yields qualitatively comparable flow structures (with $k_x = 0.11$) to those appearing at $Re \approx 300$ in the sixth eigenmode of the covariance matrix Φ resulting from global analysis. Here, $k_x = 0.11$ is the wave number extracted from spatial Fourier transform of the sixth eigenmode of Φ . Moreover, for long spanwise wavelengths, both models predict the amplification of similar TS wave-like structures in the presence of near-wall excitation (see Fig. 20). These observations can also be explained by evaluating the source terms in the energy balance equation. The intrinsic source terms are dominated by production terms that account for interactions between the fluctuation field and the mean rate of strain, i.e., $\langle u, u\partial_x U \rangle$, $\langle u, v\partial_y U \rangle$, $\langle v, u\partial_x V \rangle$, and $\langle v, v\partial_y V \rangle$; e.g., see Ref. [[58], Sec. 4.2]. In transitional boundary layer flow, since $\partial_x U$, $\partial_y V \sim O(1/Re)$ and $\partial_x V \sim O(1/Re^2)$, energy production is dominated by the term $\langle u, v\partial_y U \rangle$, which is well captured by a locally parallel analysis.

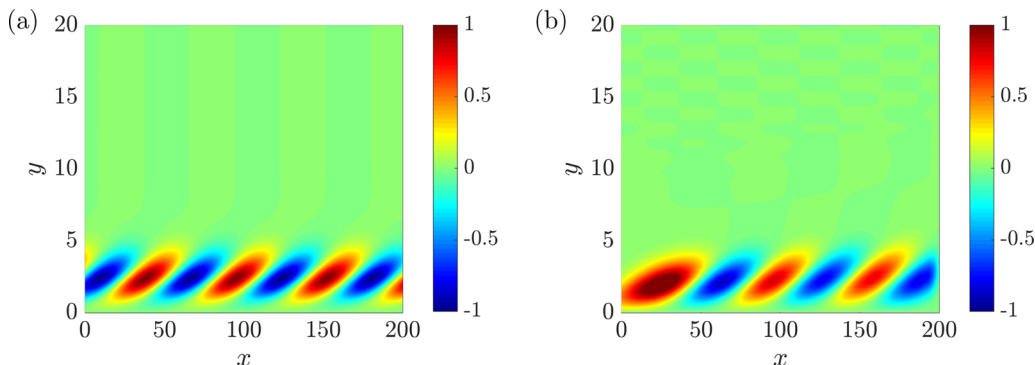


FIG. 19. Streamwise velocity fluctuations resulting from near-wall stochastic excitation of the boundary layer flow. (a) Principal eigenmode of Φ obtained in locally parallel analysis with $Re = 300$ and $(k_x, k_z) = (0.11, 0.32)$ and (b) sixth eigenmode of Φ resulting from global analysis with $k_z = 0.32$. In the global computations, $L_x = 200$ and the dominant flow structures appear at $Re \approx 300$.

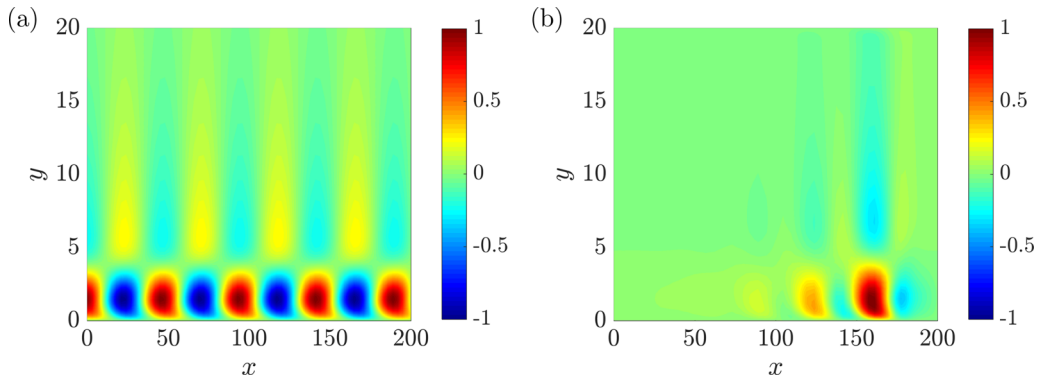


FIG. 20. The TS wave-like spatial structure of the streamwise velocity component of the principal eigenmode of the matrix Φ resulting from near-wall stochastic excitation of the boundary layer flow. (a) Locally parallel analysis with $\text{Re} = 300$ and $(k_x, k_z) = (0.13, 0.01)$; and (b) global flow analysis with $k_z = 0.01$. The wave-number pair for the locally parallel analysis corresponds to the TS wave branch in the energy spectrum of velocity fluctuations. In the global computations, $L_x = 200$ and the dominant flow structures appear at $\text{Re} \approx 300$.

In certain scenarios, locally parallel analysis can extract information about streamwise scales that may be hidden in global analysis. This feature of locally parallel analysis can be attributed to the parametrization of the velocity field over streamwise wave numbers, which enables the separate study of various streamwise length scales. For example, for wave numbers at which the global receptivity analysis of the flow subject to outer-layer excitation is dominated by near-wall streaks, locally parallel analysis can uncover the trace of weakly growing outer-layer oscillations at TS frequencies. This outcome is in agreement with experiments [78] which observe outer-layer oscillations of comparable length to width ($k_x \approx k_z$) that travel at the phase speed of free-stream velocity with similar temporal frequency as TS waves.

To further investigate this observation, we re-examine the flow structures that can be extracted from locally parallel and global flow analyses of the boundary layer flow at $\text{Re} \approx 300$ subject to stochastic excitation covering the entire free stream region. In particular, the parameters in Eq. (11) are set to $y_1 = 7$, $y_2 = 33$, and $a = 10$ for locally parallel analysis, and $y_1 = \delta_{0.99} + 2$, $y_2 = 33$, and $a = 10$ for global flow analysis. Note that $\delta_{0.99}$ in the global analysis is a function of x . By comparing the phase speed of the outer-layer oscillations to that of TS waves ($c \approx 0.4U_\infty$ obtained from local temporal stability analysis with $\text{Re}_0 = 232$ and $k_x \approx 0.19$), we obtain $\omega \approx 0.076$. Finally, Taylor's hypothesis ($c \approx U_\infty$) can be used to obtain $k_x \approx 0.076$ for outer-layer oscillations.

Figures 21(a) and 21(b) show the streamwise component of the steady-state response of the boundary layer flow with $\text{Re} = 300$ and $k_z = 0.076$ resulting from locally parallel and global flow analyses, respectively. As mentioned above, locally parallel analysis considers $k_x = k_z = 0.076$, which is in concert with the experimentally observed outer-layer oscillations. These flow structures represent the aggregate contribution of all eigenmodes of Φ and they have been obtained from $\text{diag}(C_u X C_u^*)$, where C_u is the streamwise component of the output matrix C . Note that the spatial structure shown in Fig. 21(a) is obtained by enforcing streamwise periodicity with $k_x = 0.076$. While locally parallel analysis of the stochastically forced flow predicts the amplification of structures that reside in the outer layer, the response obtained in global analysis is dominated by inner-layer streaks and a weaker amplification of outer-layer fluctuations is observed in the presence of stochastic forcing. As shown in Fig. 21(c), such weak outer-layer oscillations can be observed in the seventh mode of the covariance matrix Φ resulting from global analysis. Figure 21(d) shows the streamwise variation of these flow structures at $y = 20$, which corresponds to the wall-normal location where the largest amplitude occurs. The streamwise wavelength of this signal is approximately the same as the parallel flow estimate ($\lambda_x = 81$ vs $\lambda_x = 82.7$). Such flow structures

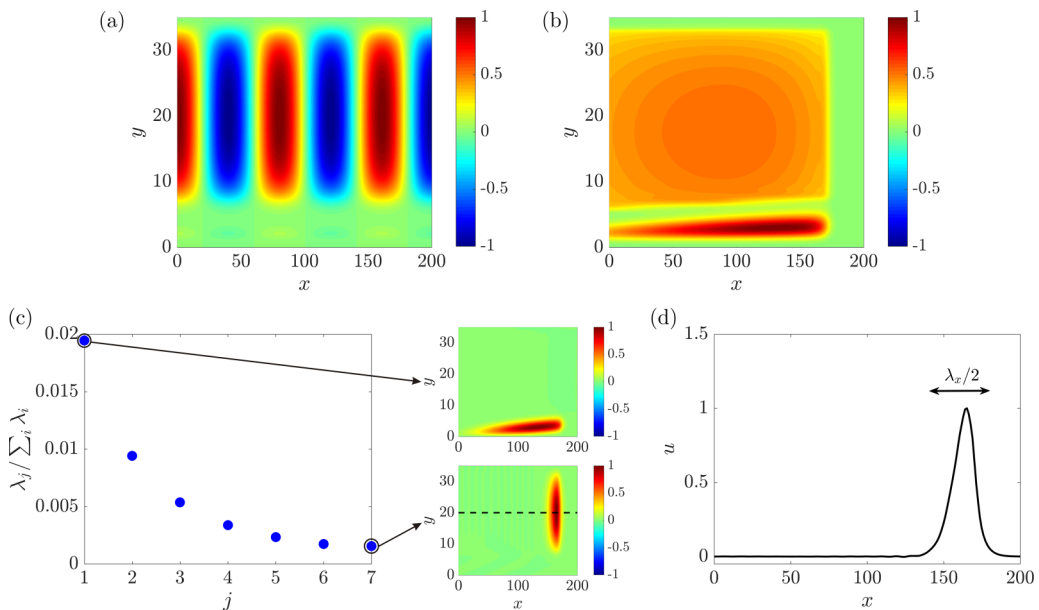


FIG. 21. The rms amplitude of the streamwise velocity component of the response $[\text{diag}(C_u X C_u^*)]$ obtained from receptivity analysis of boundary layer flow with $\text{Re} = 300$ subject to full outer-layer stochastic excitation: (a) locally parallel analysis with $k_x = k_z = 0.076$; (b) global flow analysis with $k_z = 0.076$. (c) Contribution of the first seven eigenvalues of the velocity covariance matrix Φ obtained via global receptivity analysis and the flow structures corresponding to the first and seventh eigenmodes. (d) The streamwise velocity profile at $y = 20$ from the seventh eigenmode of Φ illustrated in panel (c). In the global computations, we set $L_x = 200$ and the outer-layer oscillating structures appear at $\text{Re} \approx 300$.

may be dominated by higher amplitude streaks as their contribution to the total energy amplification is appreciably smaller than the contribution of the principal mode (0.15% vs 1.9%). Nonetheless, similar to the cascade shown in Fig. 13(f), their presence in the eigenmodes of the covariance matrix points to the physical relevance of flow structures that are identified via locally parallel analysis.

B. Frequency response analysis

The receptivity analysis conducted in this paper quantifies the energy amplification of stochastically forced linearized NS equations and identifies the dominant flow structures in statistical steady state. We utilize the solution X to the algebraic Lyapunov equation (6) to avoid the need for performing either costly stochastic simulations or integration over all temporal frequencies. This approach facilitates efficient computations by aggregating the impact of different frequencies on energy amplification. In what follows, we illustrate how additional insight into temporal aspects of the linearized dynamics can be obtained by examining the spectral density associated with velocity fluctuations (8).

Application of the temporal Fourier transform on system (3) in combination with a coordinate transformation

$$\mathbf{d}(t) = W^{1/2} \tilde{\mathbf{d}}(t),$$

where $\mathbf{d}(t)$ and $\tilde{\mathbf{d}}(t)$ are white-in-time forcings with the spatial covariance matrices W and I , respectively, yields

$$\mathbf{v}(\mathbf{k}, \omega) = T_{\mathbf{v}\mathbf{d}}(\mathbf{k}, \omega) \mathbf{d}(\mathbf{k}, \omega) = T_{\mathbf{v}\tilde{\mathbf{d}}}(\mathbf{k}, \omega) \tilde{\mathbf{d}}(\mathbf{k}, \omega). \quad (14)$$

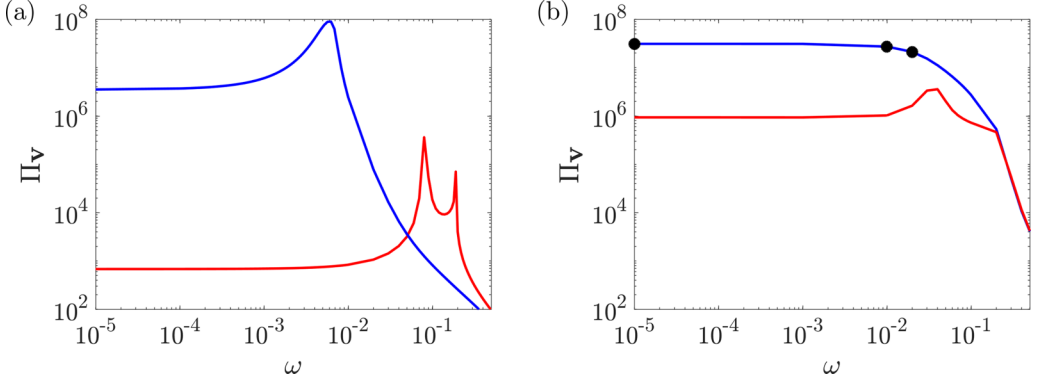


FIG. 22. Power spectral density $\Pi_{\mathbf{v}}(\mathbf{k}, \omega)$ as a function of temporal frequency ω for a boundary layer flow with $\text{Re}_0 = 232$ subject to near-wall white stochastic excitation. (a) Locally parallel analysis with $(k_x, k_z) = (7 \times 10^{-3}, 0.32)$ (blue) and $(k_x, k_z) = (0.19, 0.01)$ (red) corresponding to streaks and TS waves, respectively. (b) Global flow analysis with $k_z = 0.32$ (blue) and $k_z = 0.01$ (red). Black dots correspond to the temporal frequencies of the Fourier modes plotted in Fig. 23.

Here, \mathbf{k} denotes the spatial wave numbers, ω is the temporal frequency, $T_{\mathbf{v}\tilde{\mathbf{d}}}(\mathbf{k}, \omega)$ is the frequency response of system (3) given in Eq. (15), and

$$T_{\mathbf{v}\tilde{\mathbf{d}}}(\mathbf{k}, \omega) := T_{\mathbf{v}\tilde{\mathbf{d}}}(\mathbf{k}, \omega)W^{1/2} = C(i\omega I - A)^{-1}BW^{1/2}. \quad (15)$$

Singular value decomposition of $T_{\mathbf{v}\tilde{\mathbf{d}}}(\mathbf{k}, \omega)$ brings the input-output representation (14) into the following form:

$$\mathbf{v}(\mathbf{k}, \omega) = T_{\mathbf{v}\tilde{\mathbf{d}}}(\mathbf{k}, \omega)\tilde{\mathbf{d}}(\mathbf{k}, \omega) = \sum_i \sigma_i(\mathbf{k}, \omega)\mathbf{u}_i(\mathbf{k}, \omega)(\mathbf{w}_i(\mathbf{k}, \omega), \tilde{\mathbf{d}}(\mathbf{k}, \omega)),$$

where σ_i is the i th singular values of $T_{\mathbf{v}\tilde{\mathbf{d}}}(\mathbf{k}, \omega)$, $\mathbf{u}_i(\mathbf{k}, \omega)$ is the associated left singular vector, and $\mathbf{w}_i(\mathbf{k}, \omega)$ is the corresponding right singular vector. The power spectral density (PSD) quantifies the energy of velocity fluctuations $\mathbf{v}(\mathbf{k}, \omega)$ across temporal frequencies ω and spatial wave numbers \mathbf{k} ,

$$\Pi_{\mathbf{v}}(\mathbf{k}, \omega) = \text{trace}[T_{\mathbf{v}\tilde{\mathbf{d}}}(\mathbf{k}, \omega)T_{\mathbf{v}\tilde{\mathbf{d}}}^*(\mathbf{k}, \omega)] = \text{trace}[T_{\mathbf{v}\tilde{\mathbf{d}}}(\mathbf{k}, \omega)WT_{\mathbf{v}\tilde{\mathbf{d}}}^*(\mathbf{k}, \omega)] = \text{trace}[S_{\mathbf{v}}(\mathbf{k}, \omega)],$$

and is determined by the sum of squares of the singular values of the frequency response $T_{\mathbf{v}\tilde{\mathbf{d}}}(\mathbf{k}, \omega)$,

$$\Pi_{\mathbf{v}}(\mathbf{k}, \omega) = \sum_i \sigma_i^2(\mathbf{k}, \omega).$$

As described in Sec. II B, the energy spectrum $E(\mathbf{k})$ in Eq. (7) can be obtained by the integration of $\Pi_{\mathbf{v}}(\mathbf{k}, \omega)$ over temporal frequency [35],

$$E(\mathbf{k}) = \frac{1}{2\pi} \int_{-\infty}^{\infty} \Pi_{\mathbf{v}}(\mathbf{k}, \omega)d\omega = \frac{1}{2\pi} \int_{-\infty}^{\infty} \sum_i \sigma_i^2(\mathbf{k}, \omega)d\omega.$$

This approach extends standard resolvent analysis [62–64] to stochastically forced flows and it allows the spatial covariance matrix W of the white-in-time stochastic forcing $\tilde{\mathbf{d}}$ to be embedded into the analysis. A recent reference [79] also establishes a relation between spectral decomposition of $S_{\mathbf{v}}(\mathbf{k}, \omega)$ and dynamic mode decomposition [80].

The PSD of the boundary layer flow with $\text{Re}_0 = 232$ subject to near-wall stochastic excitation is shown in Fig. 22. While locally parallel analysis reveals isolated frequencies at which the PSD peaks, considerably broader frequency range is important in global analysis. In particular, locally parallel analysis for a flow with (i) $(k_x, k_z) = (7 \times 10^{-3}, 0.32)$ identifies nearly steady streaks as dominant flow structures (the PSD peaks at $\omega = 0.0063$); and (ii) $(k_x, k_z) = (0.19, 0.01)$ identifies

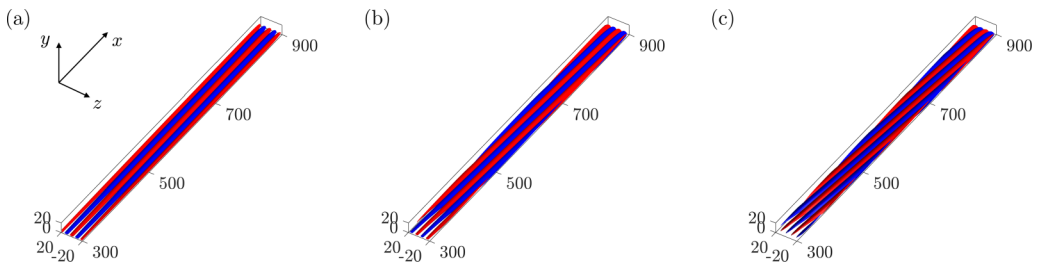


FIG. 23. Fourier modes corresponding to the principal response directions of $T_{\mathbf{v}\mathbf{d}}(\mathbf{k}, \omega)$ for a spatially evolving Blasius boundary layer flow with $\text{Re}_0 = 232$ and $k_z = 0.32$ subject to near-wall stochastic excitation. (a) $\omega = 10^{-5}$, (b) $\omega = 0.01$, and (c) $\omega = 0.02$.

two peaks at $\omega = 0.08$ and $\omega = 0.19$ which correspond to the TS waves and flow structures in the outer layer, respectively. On the other hand, the peaks are noticeably less pronounced in the analysis of the spatially evolving base flow. This suggests that the focus on isolated frequencies in global analysis may not capture the full complexity of the underlying flow structures. In fact, the shapes of spatial profiles associated with principal singular vectors of the frequency response $T_{\mathbf{v}\mathbf{d}}(\mathbf{k}, \omega)$ change for different values of ω . As shown in Fig. 23, even though the principal singular values of $T_{\mathbf{v}\mathbf{d}}(\mathbf{k}, \omega)$ for $\omega = 10^{-5}$, 0.01, and 0.02 are comparable (5464, 4732, and 3565, respectively), the corresponding response directions change from streamwise elongated modes (for steady perturbations) to oblique modes (at larger frequencies). The outcome is shorter streaks in the streamwise dimension at higher temporal frequencies and is reminiscent of the various flow structures resulting from the eigenvalue decomposition of the steady-state covariance matrix (cf. Sec. IV and Fig. 13). Similar trends are also observed in the spatiotemporal analysis of hypersonic boundary layers [61].

VI. CONCLUDING REMARKS

In the present study, we have utilized the linearized NS equations to study energy amplification in the Blasius boundary layer flow subject to white-in-time stochastic forcing entering at various wall-normal locations. The evolution of flow fluctuations is captured by two models that arise from locally parallel and global perspectives, and the amplification of persistent stochastic disturbances is studied using the algebraic Lyapunov equation. Both parallel and global flow analyses predict largest amplification of streamwise elongated streaks with similar spanwise wavelength. Moreover, TS wave-like flow structures arise from persistent near-wall stochastic excitation at long spanwise wavelengths. We have shown that as the region of excitation moves away from the wall, energy amplification reduces, which suggests that the near-wall region is more sensitive to external disturbances. We have also examined the spatial structure of characteristic eddies that result from stochastic excitation of the boundary layer flow. Our computational experiments demonstrate good agreement between the results obtained from parallel and global flow models and identify the importance of suboptimal flow structures in global analysis. This agreement highlights the efficacy of using parallel flow assumptions in the receptivity analysis of boundary layer flows, especially when it is desired to evaluate the energetic contribution of individual streamwise scales.

In contrast to resolvent-mode analysis, which quantifies the energy amplification from monochromatic forcing, our stochastic approach incorporates a broad-band forcing model with known spatial correlations that captures the aggregate effect of all time scales. Our Lyapunov-based framework generalizes the concept of receptivity to the amplification of velocity fluctuations from any external source of persistent excitation with known statistical properties. We note that the ability of the method to capture relevant flow physics relies on the spectral properties of the

stochastic forcing that can be used to model the effect of, e.g., free-stream turbulence. In addition to white-in-time stochastic forcing with trivial (identity) spatial covariance operator, we have also investigated energy amplification arising from the streamwise-decaying forcing that corresponds to the spectrum of HIT. Our computations demonstrate close correspondence between these two case studies. The spatiotemporal spectrum of stochastic excitation sources can be further determined in order to provide statistical consistency with the results of numerical simulations or experimental measurements of the boundary layer flow [39,81]. Implementation of such ideas to leverage statistical data and improve physics-based analysis is a topic for future research.

ACKNOWLEDGMENTS

Part of this work was conducted during the 2016 CTR Summer Program with financial support from Stanford University and NASA Ames Research Center. We thank Prof. P. Moin for providing us with the opportunity to participate in the CTR Summer Program and Prof. J. W. Nichols for insightful discussions. Financial support from the National Science Foundation under Award No. CMMI 1739243 and the Air Force Office of Scientific Research under Awards No. FA9550-16-1-0009 and No. FA9550-18-1-0422 is gratefully acknowledged.

APPENDIX A: OPERATOR-VALUED MATRICES IN EQS. (2)

Equation (2) is of the following form:

$$\begin{bmatrix} v_t \\ \eta_t \end{bmatrix} = \underbrace{\begin{bmatrix} \mathbf{A}_{11} & \mathbf{A}_{12} \\ \mathbf{A}_{21} & \mathbf{A}_{22} \end{bmatrix}}_{\mathbf{A}} \begin{bmatrix} v \\ \eta \end{bmatrix} + \underbrace{\begin{bmatrix} \mathbf{B}_{11} & \mathbf{B}_{12} & \mathbf{B}_{13} \\ \mathbf{B}_{21} & 0 & \mathbf{B}_{23} \end{bmatrix}}_{\mathbf{B}} \begin{bmatrix} d_u \\ d_v \\ d_w \end{bmatrix}, \quad \begin{bmatrix} u \\ v \\ w \end{bmatrix} = \underbrace{\begin{bmatrix} \mathbf{C}_{11} & \mathbf{C}_{12} \\ \mathbf{I} & 0 \\ \mathbf{C}_{31} & \mathbf{C}_{32} \end{bmatrix}}_{\mathbf{C}} \begin{bmatrix} v \\ \eta \end{bmatrix},$$

with operators defined as

$$\begin{aligned} \mathbf{A}_{11} &= \Delta^{-1} \left[\frac{1}{\text{Re}} \Delta^2 - U \Delta \partial_x - V \Delta \partial_y - \partial_y V \Delta - 2 \partial_x U \partial_{xx} - \partial_{yy} V \partial_y + \partial_{yy} U \partial_x \right. \\ &\quad \left. - \partial_{yyy} V - 2(\partial_{xy} U \partial_x + \partial_x U \partial_{xy})(\partial_{xx} - k_z^2)^{-1} \partial_{xy} \right] - \sigma(x), \\ \mathbf{A}_{12} &= 2ik_z \Delta^{-1} [(\partial_{xy} U \partial_x + \partial_x U \partial_{xy})(\partial_{xx} - k_z^2)^{-1}], \\ \mathbf{A}_{21} &= -ik_z \partial_y U, & \mathbf{A}_{22} &= \frac{1}{\text{Re}} \Delta - U \partial_x - V \partial_y - \partial_x U - \sigma(x), \\ \mathbf{B}_{11} &= -\Delta^{-1} (f \partial_{xy} + \partial_y f \partial_x), & \mathbf{B}_{12} &= \Delta^{-1} (f \partial_{xx} - k_z^2 f), & \Delta &= \partial_{xx} + \partial_{yy} - k_z^2, \\ \mathbf{B}_{13} &= -ik_z \Delta^{-1} (\partial_y f + f \partial_y), & \mathbf{B}_{21} &= -ik_z f, & \mathbf{B}_{23} &= -f \partial_x, \\ \mathbf{C}_{11} &= -(\partial_{xx} - k_z^2)^{-1} \partial_{xy}, & \mathbf{C}_{12} &= ik_z (\partial_{xx} - k_z^2)^{-1}, \\ \mathbf{C}_{31} &= -ik_z (\partial_{xx} - k_z^2)^{-1} \partial_y, & \mathbf{C}_{32} &= -(\partial_{xx} - k_z^2)^{-1} \partial_x. \end{aligned}$$

Here, $\sigma(x)$ determines the strength of sponge layers as a function of x ; see Ref. [74] for additional details. For parallel flows, Fourier transform in x can be used to further parametrize the operators over streamwise wave numbers; see Ref. [35] for the expressions of \mathbf{A} , \mathbf{B} , and \mathbf{C} in such instances.

APPENDIX B: CHANGE OF VARIABLES

The kinetic energy of velocity fluctuations in the linearized NS equations (2) is defined using the energy norm

$$E = \langle \boldsymbol{\varphi}, \boldsymbol{\varphi} \rangle_e = \frac{1}{2} \int_{\Omega} \boldsymbol{\varphi}^* \mathbf{Q} \boldsymbol{\varphi} dy =: \langle \boldsymbol{\varphi}, \mathbf{Q} \boldsymbol{\varphi} \rangle,$$

where Ω is the computational domain, $\langle \cdot, \cdot \rangle$ is the L_2 inner product, and \mathbf{Q} is the operator which determines kinetic energy of the state $\boldsymbol{\varphi} = [v\eta]^T$ on the appropriate state-space [35,82]. With proper discretization of the inhomogeneous directions, the kinetic energy is given by $E = \boldsymbol{\varphi}^* \mathbf{Q} \boldsymbol{\varphi}$. Here, Q is the discrete representation of operator \mathbf{Q} and is a positive definite matrix. The coordinate transformation $\boldsymbol{\psi} = Q^{1/2} \boldsymbol{\varphi}$ can thus be employed to obtain the kinetic energy via the standard Euclidean norm: $E = \boldsymbol{\psi}^* \boldsymbol{\psi}$ in the new coordinate space. Equation (3) results from the application of this change of variables on the discretized state-space matrices \bar{A} , \bar{B} , and \bar{C}

$$A = Q^{1/2} \bar{A} Q^{-1/2}, \quad B = Q^{1/2} \bar{B} I_W^{-1/2}, \quad C = I_W^{1/2} \bar{C} Q^{-1/2},$$

and the discretized input $\bar{\mathbf{d}}$ and velocity $\bar{\mathbf{v}}$ vectors

$$\mathbf{d} = I_W^{1/2} \bar{\mathbf{d}}, \quad \mathbf{v} = I_W^{1/2} \bar{\mathbf{v}}.$$

Here, I_W is a diagonal matrix of integration weights on the set of Chebyshev collocation points.

The operator \mathbf{Q} in the global model is of the form

$$\mathbf{Q} = \begin{bmatrix} \partial_{xy}^\dagger \Theta^\dagger \Theta \partial_{xy} + \mathbf{I} + k_z^2 \partial_y^\dagger \Theta^\dagger \Theta \partial_y & 0 \\ 0 & k_z^2 \Theta^\dagger \Theta + \partial_x^\dagger \Theta^\dagger \Theta \partial_x \end{bmatrix},$$

where $\Theta = (\partial_x^2 - k_z^2)^{-1}$, \mathbf{I} is the identity operator, and \dagger represents the adjoint of an operator. The representation of \mathbf{Q} for parallel flows can be found in Ref. [[35], Appendix A].

APPENDIX C: GLOBAL ANALYSIS USING THE DESCRIPTOR FORM

The descriptor form of the linearized NS equations around the Blasius boundary layer profile is given by

$$\mathbf{F} \dot{\boldsymbol{\psi}}(t) = \mathbf{A} \boldsymbol{\psi}(t) + \mathbf{B} \mathbf{d}(t), \quad \mathbf{v}(t) = \mathbf{C} \boldsymbol{\psi}(t), \quad (\text{C1})$$

where $\boldsymbol{\psi} = [u \ v \ w \ p]^T$ and

$$\mathbf{F} = \begin{bmatrix} \mathbf{I} & 0 & 0 & 0 \\ 0 & \mathbf{I} & 0 & 0 \\ 0 & 0 & \mathbf{I} & 0 \\ 0 & 0 & 0 & 0 \end{bmatrix}, \quad \mathbf{A} = \begin{bmatrix} \mathbf{K} + \partial_y V & -\partial_y U & 0 & -\partial_x \\ 0 & \mathbf{K} - \partial_y V & 0 & -\partial_y \\ 0 & 0 & \mathbf{K} & -ik_z \\ \partial_x & \partial_y & ik_z & 0 \end{bmatrix},$$

$$\mathbf{B} = \begin{bmatrix} \mathbf{I} & 0 & 0 \\ 0 & \mathbf{I} & 0 \\ 0 & 0 & \mathbf{I} \\ 0 & 0 & 0 \end{bmatrix}, \quad \mathbf{C} = \mathbf{B}^T,$$

where \mathbf{I} is the identity operator and

$$\mathbf{K} = \frac{1}{\text{Re}} (\partial_x^2 + \partial_y^2 - k_z^2) - U \partial_x - V \partial_y - \sigma(x).$$

Here, $\sigma(x)$ determines the strength of sponge layers as a function of x . The width and strength of the sponge layers are selected to guarantee the stability of the generalized dynamics (C1) in their discretized form, while having minimal influence on velocity fluctuation field. The energy of

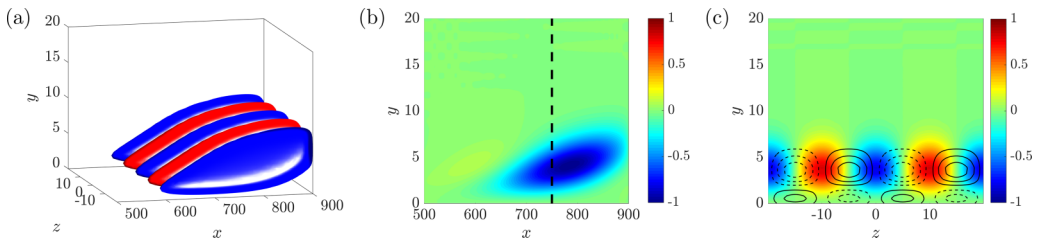


FIG. 24. (a) The streamwise component of the principle eigenmode of output covariance matrix Φ resulting from near-wall stochastic excitation (case 1 in Table I) of the linearized model (C1) with $k_z = 0.32$ and $\text{Re}_0 = 232$. (b) Streamwise velocity at $z = 0$. (c) $y - z$ slice of streamwise velocity (color plots) and vorticity (contour lines) at $x = 750$, which corresponds to the cross-plane slice indicated by the black dashed lines in panel (b).

velocity fluctuations in Eqs. (C1) can be determined by

$$E = \text{trace}[\mathbf{C}(\mathbf{G}_c + \mathbf{G}_{nc})\mathbf{C}^\dagger],$$

which is analogous to expression (7) for the evolution model with $\boldsymbol{\psi} = [v \ \eta]^T$. Here, \dagger represents the adjoint of an operator and \mathbf{G}_c and \mathbf{G}_{nc} are the causal and non-causal reachability Gramians that satisfy the following generalized Lyapunov equations:

$$\mathbf{F}\mathbf{G}_c\mathbf{A}^\dagger + \mathbf{A}\mathbf{G}_c\mathbf{F}^\dagger = -\mathbf{P}_l\mathbf{B}\mathbf{B}^\dagger\mathbf{P}_l^\dagger, \quad \mathbf{F}\mathbf{G}_{nc}\mathbf{A}^\dagger - \mathbf{A}\mathbf{G}_{nc}\mathbf{F}^\dagger = \mathbf{Q}_l\mathbf{B}\mathbf{B}^\dagger\mathbf{Q}_l^\dagger, \quad (\text{C2})$$

where \mathbf{P}_l and \mathbf{Q}_l are the projection operators that project the state space into causal and non-causal subspaces; see Ref. [[83], Appendix E] for additional details.

After proper spatial discretization of the state space, the procedure for solving the generalized Lyapunov equations (C2) consists of the following steps: (i) compute the generalized Schur form of the discretized pair (A, F) , (ii) compute the solution to a system of generalized Sylvester equations, and (iii) solve the generalized Lyapunov equations (C2) for Gramian matrices G_c and G_{nc} . The Schur decomposition and the solution to the Sylvester equations are required to split the state into slow (causal) and fast (non-causal) parts and to form projection matrices P_l and Q_l . For a spatial discretization that involves $n = 4 \times N_x \times N_y$ states, the overall computational complexity of this procedure is $O(n^3)$, which is significantly higher than the computational complexity of solving the Lyapunov equation (6) with $n = 2 \times N_x \times N_y$. Moreover, since the state space of the descriptor form has twice the number of states as the evolution model (3), computations based on this representation require more memory. We refer the interested reader to Ref. [[83], Appendix E] for additional details on computing energy amplification using the descriptor form.

To demonstrate the close agreement between the outcome of receptivity analysis based on the evolution model of Sec. II and the descriptor form (C1), we focus on the energy amplification of flow structures with $k_z = 0.32$. Similar to Sec. II, we discretize system (C1) by applying Fourier transform in z and using a Chebyshev collocation scheme in the wall-normal and streamwise directions. In the wall-normal direction, we enforce homogenous Dirichlet boundary conditions on all velocity components. In the streamwise direction, we use homogeneous Dirichlet boundary conditions at the inflow and spatial extrapolation at the outflow for all velocity components. Moreover, sponge layers are applied at the inflow and outflow to mitigate the influence of boundary conditions on the fluctuation dynamics. As shown in Fig. 24, the dominant flow structures that result from near-wall excitation closely resemble the results presented in Fig. 11.

APPENDIX D: MATCHING THE HIT SPECTRUM WITH STOCHASTICALLY FORCED LINEARIZED NS EQUATIONS

We briefly describe how the spectrum of HIT can be matched using stochastically forced linearized NS equations; see Ref. [[83], Appendix C] for additional details. The dynamics of

velocity fluctuations \mathbf{v} around a uniform base flow $\bar{\mathbf{u}} = [1 \ 0 \ 0]^T$ subject to the solenoidal forcing $\mathbf{d}_s = [d_u \ d_v \ d_w]$ ($\nabla \cdot \mathbf{d}_s = 0$) are governed by the linearized NS equations

$$\mathbf{v}_t(\mathbf{k}, t) = \mathbf{A}(\mathbf{k})\mathbf{v}(\mathbf{k}, t) + \mathbf{d}_s(\mathbf{k}, t),$$

where $\mathbf{k} = [k_x \ k_y \ k_z]^T$ is the spatial wave-number vector and

$$\mathbf{A}(\mathbf{k}) = -\left(ik_x + \frac{k^2}{\text{Re}}\right)\mathbf{I}_{3 \times 3}$$

is the linearized operator. Here, $k^2 = k_x^2 + k_y^2 + k_z^2$ and $\mathbf{I}_{3 \times 3}$ is the identity operator. The steady-state covariance of velocity fluctuations $\Phi(\mathbf{k}) = \lim_{t \rightarrow \infty} \langle \mathbf{v}(\mathbf{k}, t) \mathbf{v}^*(\mathbf{k}, t) \rangle$ satisfies the following Lyapunov equation,

$$\mathbf{A}(\mathbf{k})\Phi(\mathbf{k}) + \Phi(\mathbf{k})\mathbf{A}^*(\mathbf{k}) = -\mathbf{M}(\mathbf{k}), \quad (\text{D1})$$

where $\mathbf{M}(\mathbf{k})$ denotes the covariance of white-in-time stochastic forcing. The steady-state covariance matrix Φ corresponding to HIT is given by [84]

$$\Phi(\mathbf{k}) = \frac{E(k)}{4\pi k^2} \left(\mathbf{I}_{3 \times 3} + \frac{\mathbf{k}\mathbf{k}^T}{k^2} \right),$$

where $E(k)$ is the energy spectrum of the HIT based on the von Kármán spectrum [26],

$$E(k) = LC_{vk} \frac{(kL)^4}{(1 + k^2L^2)^{17/6}}.$$

Here, $C_{vk} = \frac{\Gamma(17/6)}{\Gamma(5/2)\Gamma(1/3)} = 0.48$ is a normalization constant in which $\Gamma(\cdot)$ is the Γ function and the integral length scale $L = 1.5$ corresponds to numerical simulations of HIT [85]. The input forcing covariance can be derived by substituting $\Phi(\mathbf{k})$ into Eq. (D1), which yields

$$\mathbf{M}(\mathbf{k}) = \frac{E(k)}{2\pi \text{Re}} \left(\mathbf{I}_{3 \times 3} + \frac{\mathbf{k}\mathbf{k}^T}{k^2} \right).$$

After finite-dimensional approximation of all operators, the covariance of forcing \mathbf{d}_s , parametrized by k_z , is obtained via inverse Fourier transform in x and y . The resulting covariance matrix $\mathbf{M}(k_z)$ includes two-point correlations of the white stochastic forcing in the streamwise and wall-normal directions and it replaces W in Eq. (6).

-
- [1] M. V. Morkovin, E. Reshotko, and T. Herbert, Transition in open flow systems: A reassessment, *Bull. Am. Phys. Soc.* **39**, 1882 (1994).
 - [2] W. S. Saric, H. L. Reed, and E. J. Kerschen, Boundary-layer receptivity to freestream disturbances, *Annu. Rev. Fluid Mech.* **34**, 291 (2002).
 - [3] J. Kim and T. R. Bewley, A linear systems approach to flow control, *Annu. Rev. Fluid Mech.* **39**, 383 (2007).
 - [4] M. T. Landahl, Wave breakdown and turbulence, *SIAM J. Appl. Math.* **28**, 735 (1975).
 - [5] M. T. Landahl, A note on an algebraic instability of inviscid parallel shear flows, *J. Fluid Mech.* **98**, 243 (1980).
 - [6] W. M. F. Orr, The stability or instability of the steady motions of a perfect liquid and of a viscous liquid. Part II: A viscous liquid, *Proc. R. Irish Acad. Sect. A: Math. Phys. Sci.* **27**, 69 (1907).
 - [7] K. M. Butler and B. F. Farrell, Three-dimensional optimal perturbations in viscous shear flow, *Phys. Fluids A* **4**, 1637 (1992).

- [8] M. J. P. Hack and P. Moin, Algebraic disturbance growth by interaction of Orr and lift-up mechanisms, *J. Fluid Mech.* **829**, 112 (2017).
- [9] P. S. Klebanoff, K. D. Tidstrom, and L. M. Sargent, The three-dimensional nature of boundary-layer instability, *J. Fluid Mech.* **12**, 1 (1962).
- [10] Y. S. Kachanov and V. Y. Levchenko, The resonant interaction of disturbances at laminar-turbulent transition in a boundary layer, *J. Fluid Mech.* **138**, 209 (1984).
- [11] L. M. Mack, Boundary-layer linear stability theory, in *Special Course on Stability and Transition of Laminar Flow* (AGARD Rep. Neuilly sur Seine, France, 1984), pp. 1–81, No. 709.
- [12] T. Herbert, Secondary instability of boundary layers, *Ann. Rev. Fluid Mech.* **20**, 487 (1988).
- [13] T. Sayadi, C. W. Hamman, and P. Moin, Direct numerical simulation of complete H-type and K-type transitions with implications for the dynamics of turbulent boundary layers, *J. Fluid Mech.* **724**, 480 (2013).
- [14] M. Matsubara and P. H. Alfredsson, Disturbance growth in boundary layers subjected to free-stream turbulence, *J. Fluid Mech.* **430**, 149 (2001).
- [15] J. H. M. Fransson, M. Matsubara, and P. H. Alfredsson, Transition induced by free-stream turbulence, *J. Fluid Mech.* **527**, 1 (2005).
- [16] P. Ricco, E. J. Walsh, F. Brighenti, and D. M. McEligot, Growth of boundary-layer streaks due to free-stream turbulence, *Int. J. Heat and Fluid Flow* **61**, 272 (2016).
- [17] R. Jacobs and P. Durbin, Simulations of bypass transition, *J. Fluid Mech.* **428**, 185 (2001).
- [18] L. Brandt, P. Schlatter, and D. S. Henningson, Transition in boundary layers subject to free-stream turbulence, *J. Fluid Mech.* **517**, 167 (2004).
- [19] M. E. Goldstein, Effect of free-stream turbulence on boundary layer transition, *Phil. Trans. R. Soc. A* **372**, 20130354 (2014).
- [20] M. J. P. Hack and T. A. Zaki, Streak instabilities in boundary layers beneath free-stream turbulence, *J. Fluid Mech.* **741**, 280 (2014).
- [21] R. G. Jacobs and P. A. Durbin, Shear sheltering and the continuous spectrum of the Orr-Sommerfeld equation, *Phys. Fluids* **10**, 2006 (1998).
- [22] A. J. Smits, B. J. McKeon, and I. Marusic, High-Reynolds number wall turbulence, *Ann. Rev. Fluid Mech.* **43**, 353 (2011).
- [23] M. J. P. Hack and P. Moin, Coherent instability in wall-bounded shear, *J. Fluid Mech.* **844**, 917 (2018).
- [24] B. R. Noack, M. Morzyński, and G. Tadmor, *Reduced-Order Modelling for Flow Control*, CISM Courses and Lectures, Vol. 528 (Springer, Berlin, 2011).
- [25] W. D. McComb, *The Physics of Fluid Turbulence* (Oxford University Press, Oxford, UK, 1991).
- [26] P. A. Durbin and B. A. P. Reif, *Statistical Theory and Modeling for Turbulent Flows* (Wiley, New York, 2011).
- [27] S. A. Orszag, Analytical theories of turbulence, *J. Fluid Mech.* **41**, 363 (1970).
- [28] R. H. Kraichnan, An almost-Markovian Galilean-invariant turbulence model, *J. Fluid Mech.* **47**, 513 (1971).
- [29] A. S. Monin and A. M. Yaglom, *Statistical Fluid Mechanics* (MIT Press, Cambridge, MA, 1975), Vol. 2.
- [30] B. F. Farrell and P. J. Ioannou, Stochastic dynamics of baroclinic waves, *J. Atmos. Sci.* **50**, 4044 (1993).
- [31] B. F. Farrell and P. J. Ioannou, A theory for the statistical equilibrium energy spectrum and heat flux produced by transient baroclinic waves, *J. Atmos. Sci.* **51**, 2685 (1994).
- [32] T. DelSole and B. F. Farrell, A stochastically excited linear system as a model for quasigeostrophic turbulence: Analytic results for one-and two-layer fluids, *J. Atmos. Sci.* **52**, 2531 (1995).
- [33] B. F. Farrell and P. J. Ioannou, Stochastic forcing of the linearized Navier-Stokes equations, *Phys. Fluids A* **5**, 2600 (1993).
- [34] B. Bamieh and M. Dahleh, Energy amplification in channel flows with stochastic excitation, *Phys. Fluids* **13**, 3258 (2001).
- [35] M. R. Jovanović and B. Bamieh, Componentwise energy amplification in channel flows, *J. Fluid Mech.* **534**, 145 (2005).

- [36] Y. Hwang and C. Cossu, Amplification of coherent streaks in the turbulent Couette flow: An input-output analysis at low Reynolds number, *J. Fluid Mech.* **643**, 333 (2010).
- [37] Y. Hwang and C. Cossu, Linear non-normal energy amplification of harmonic and stochastic forcing in the turbulent channel flow, *J. Fluid Mech.* **664**, 51 (2010).
- [38] R. Moarref and M. R. Jovanović, Model-based design of transverse wall oscillations for turbulent drag reduction, *J. Fluid Mech.* **707**, 205 (2012).
- [39] A. Zare, M. R. Jovanović, and T. T. Georgiou, Colour of turbulence, *J. Fluid Mech.* **812**, 636 (2017).
- [40] P. Huerre and P. A. Monkewitz, Local and global instabilities in spatially developing flows, *Annu. Rev. Fluid Mech.* **22**, 473 (1990).
- [41] P. J. Schmid and D. S. Henningson, *Stability and Transition in Shear Flows* (Springer-Verlag, New York, 2001).
- [42] P. J. Schmid, Nonmodal stability theory, *Annu. Rev. Fluid Mech.* **39**, 129 (2007).
- [43] T. Herbert, Analysis of the subharmonic route to transition in boundary layers, in *Proceedings of the 22nd Aerospace Sciences Meeting* (AIAA, Reston, 1984), pp. 84–0009.
- [44] S. J. Leib, D. W. Wundrow, and M. E. Goldstein, Effect of free-stream turbulence and other vortical disturbances on a laminar boundary layer, *J. Fluid Mech.* **380**, 169 (1999).
- [45] P. Ricco, J. Luo, and X. Wu, Evolution and instability of unsteady nonlinear streaks generated by free-stream vortical disturbances, *J. Fluid Mech.* **677**, 1 (2011).
- [46] T. Herbert, Parabolized stability equations, *Annu. Rev. Fluid Mech.* **29**, 245 (1997).
- [47] A. Lozano-Durán, M. J. P. Hack, and P. Moin, Modeling boundary-layer transition in direct and large-eddy simulations using parabolized stability equations, *Phys. Rev. Fluids* **3**, 023901 (2018).
- [48] A. Towne and T. Colonius, One-way spatial integration of hyperbolic equations, *J. Comp. Phys.* **300**, 844 (2015).
- [49] W. Ran, A. Zare, M. J. Philipp Hack, and M. R. Jovanović, Modeling mode interactions in boundary layer flows via parabolized Floquet equations, *Phys. Rev. Fluids* **4**, 023901 (2019).
- [50] U. Ehrenstein and F. Gallaire, On two-dimensional temporal modes in spatially evolving open flows: The flat-plate boundary layer, *J. Fluid Mech.* **536**, 209 (2005).
- [51] F. Alizard and J. Robinet, Spatially convective global modes in a boundary layer, *Phys. Fluids* **19**, 114105 (2007).
- [52] J. W. Nichols and S. K. Lele, Global modes and transient response of a cold supersonic jet, *J. Fluid Mech.* **669**, 225 (2011).
- [53] P. Paredes, R. Gosse, V. Theofilis, and R. Kimmel, Linear modal instabilities of hypersonic flow over an elliptic cone, *J. Fluid Mech.* **804**, 442 (2016).
- [54] O. T. Schmidt, A. Towne, T. Colonius, A. V. Cavalieri, P. Jordan, and G. A. Brès, Wave packets and trapped acoustic modes in a turbulent jet: Coherent structure eduction and global stability, *J. Fluid Mech.* **825**, 1153 (2017).
- [55] D. Barkley, H. M. Blackburn, and S. J. Sherwin, Direct optimal growth analysis for timesteppers, *Int. J. Numer. Methods Fluids* **57**, 1435 (2008).
- [56] A. Monokrousos, E. Åkervik, L. Brandt, and D. S. Henningson, Global three-dimensional optimal disturbances in the Blasius boundary-layer flow using time-steppers, *J. Fluid Mech.* **650**, 181 (2010).
- [57] L. Brandt, D. Sipp, J. O. Pralits, and O. Marquet, Effect of base-flow variation in noise amplifiers: The flat-plate boundary layer, *J. Fluid Mech.* **687**, 503 (2011).
- [58] D. Sipp and O. Marquet, Characterization of noise amplifiers with global singular modes: The case of the leading-edge flat-plate boundary layer, *Theor. Comp. Fluid Dyn.* **27**, 617 (2013).
- [59] J. Jeun, J. W. Nichols, and M. R. Jovanović, Input-output analysis of high-speed axisymmetric isothermal jet noise, *Phys. Fluids* **28**, 047101 (2016).
- [60] O. T. Schmidt, A. Towne, G. Rigas, T. Colonius, and G. A. Brès, Spectral analysis of jet turbulence, *J. Fluid Mech.* **855**, 953 (2018).
- [61] A. Dwivedi, G. S. Sidharth, J. W. Nichols, G. V. Candler, and M. R. Jovanović, Reattachment streaks in hypersonic compression ramp flow: An input-output analysis, *J. Fluid Mech.* (2019), doi:[10.1017/jfm.2019.702](https://doi.org/10.1017/jfm.2019.702).

- [62] L. N. Trefethen, A. E. Trefethen, S. C. Reddy, and T. A. Driscoll, Hydrodynamic stability without eigenvalues, *Science* **261**, 578 (1993).
- [63] M. R. Jovanović, Modeling, analysis, and control of spatially distributed systems, Ph.D. thesis, University of California, Santa Barbara, 2004.
- [64] B. J. McKeon and A. S. Sharma, A critical-layer framework for turbulent pipe flow, *J. Fluid Mech.* **658**, 336 (2010).
- [65] J. A. Weideman and S. C. Reddy, A MATLAB differentiation matrix suite, *ACM Trans. Math. Software* **26**, 465 (2000).
- [66] H. Kwakernaak and R. Sivan, *Linear Optimal Control Systems* (Wiley-Interscience, New York, 1972).
- [67] H. P. Bakewell and J. L. Lumley, Viscous sublayer and adjacent wall region in turbulent pipe flow, *Phys. Fluids* **10**, 1880 (1967).
- [68] P. Moin and R. Moser, Characteristic-eddy decomposition of turbulence in a channel, *J. Fluid Mech.* **200**, 471 (1989).
- [69] P. Andersson, M. Berggren, and D. Henningson, Optimal disturbances and bypass transition in boundary layers, *Phys. Fluids* **11**, 134 (1999).
- [70] P. Luchini, Reynolds-number-independent instability of the boundary layer over a flat surface: Optimal perturbations, *J. Fluid Mech.* **404**, 289 (2000).
- [71] M. J. P. Hack and T. A. Zaki, Modal and non-modal stability of boundary layers forced by spanwise wall oscillations, *J. Fluids Mech.* **778**, 389 (2015).
- [72] V. Theofilis, Advances in global linear instability analysis of nonparallel and three-dimensional flows, *Prog. Aerosp. Sci.* **39**, 249 (2003).
- [73] A. Mani, Analysis and optimization of numerical sponge layers as a nonreflective boundary treatment, *J. Comput. Phys.* **231**, 704 (2012).
- [74] W. Ran, A. Zare, J. W. Nichols, and M. R. Jovanović, The effect of sponge layers on global stability analysis of Blasius boundary layer flow, in *Proceedings of the 47th AIAA Fluid Dynamics Conference* (AIAA, Reston, 2017), pp. 3456–3467.
- [75] J. Høpfner and L. Brandt, Stochastic approach to the receptivity problem applied to bypass transition in boundary layers, *Phys. Fluids* **20**, 024108 (2008).
- [76] F. Lin and M. R. Jovanović, Energy amplification in a parallel Blasius boundary layer flow subject to free-stream turbulence, in *Proceedings of the 2008 American Control Conference* (IEEE, Piscataway, 2008), pp. 3070–3075.
- [77] D. W. Wundrow and M. E. Goldstein, Effect on a laminar boundary layer of small-amplitude streamwise vorticity in the upstream flow, *J. Fluid Mech.* **426**, 229 (2001).
- [78] J. Kendall, Experiments on boundary-layer receptivity to freestream turbulence, in *Proceedings of the 36th AIAA Aerospace Sciences Meeting and Exhibit* (AIAA, Reston, 1998), pp. 98–0530.
- [79] A. Towne, O. T. Schmidt, and T. Colonius, Spectral proper orthogonal decomposition and its relationship to dynamic mode decomposition and resolvent analysis, *J. Fluid Mech.* **847**, 821 (2018).
- [80] P. J. Schmid, Dynamic mode decomposition of numerical and experimental data, *J. Fluid Mech.* **656**, 5 (2010).
- [81] A. Zare, Y. Chen, M. R. Jovanović, and T. T. Georgiou, Low-complexity modeling of partially available second-order statistics: Theory and an efficient matrix completion algorithm, *IEEE Trans. Automat. Control* **62**, 1368 (2017).
- [82] S. C. Reddy and D. S. Henningson, Energy growth in viscous channel flows, *J. Fluid Mech.* **252**, 209 (1993).
- [83] R. Moarref, Model-based control of transitional and turbulent wall-bounded shear flows, Ph.D. thesis, University of Minnesota, 2012.
- [84] G. K. Batchelor, *The Theory of Homogeneous Turbulence* (Athenaeum Press, Cambridge, MA, 1953).
- [85] L. Wang, S. Chen, J. G. Brasseur, and J. C. Wyngaard, Examination of hypotheses in the Kolmogorov refined turbulence theory through high-resolution simulations. Part 1. Velocity field, *J. Fluid Mech* **309**, 113 (1996).