

A Round Robin Algorithm for an Embedded Electronic Battery Equalizer

A. Hande

Member, IEEE

*Electrical Engineering Department
Lake Superior State University, MI 49783
Phone: (906) 635-2598, Fax: (906) 635-6663
Email: ahande@lssu.edu*

T.A. Stuart

Senior Member, IEEE

*Electrical Engineering Department
The University of Toledo, Toledo, OH 43606
Phone: (419) 530-8289, Fax: (419) 530-8146
Email: tstuart@uoft02.utoledo.edu*

Abstract

A special round robin (RR) algorithm has been developed to equalize nickel metal hydride (NiMH) battery packs using a new selective equalizer. This algorithm detects batteries either at a very low state of charge (SOC) or at an extremely high SOC. In this system, a set of electromechanical relays are connected in a matrix to route boost current to the weaker batteries. The relay switching is controlled by a 32-bit microcontroller, and the boost current is supplied by a boost charger. Once the RR algorithm detects a weak battery, it schedules the detected battery for a specific boost time. Test results show that the equalizer was able to re-balance an artificially unbalanced pack, and the capacity was increased by 27 % within six charge-discharge cycles. The number of cycles required to re-balance the pack was significantly reduced by using the RR algorithm.

1. Introduction

Electric and hybrid electric vehicles (EVs and HEVs) use electrochemical secondary batteries which are connected in series packs to store energy for propulsion. The cell design, ambient temperature, and length of usage/storage are a few factors that affect the life or charge retention of these batteries [1]. This means that if there are certain subtle differences between the individual batteries, the batteries will not charge/discharge in a uniform manner. The result is that some units will be overcharged, some excessively discharged, and poor performance will result.

All batteries obviously must remain within a high and low voltage operating range to prevent damage. During the discharge cycle, batteries which are less

efficient tend to go out of voltage balance before the rest, resulting in an overall limiting of the total battery capacity. Similarly, during the charge cycle, batteries which are more efficient tend to get charged a little higher than the rest, resulting in an overcharge. Batteries that are overcharged are subject to an oxygen recombination cycle at their negative electrodes, and this causes their cycle life to be significantly reduced over a period of time [1]. Since the entire battery pack is exposed to a number of charge and discharge cycles, the after effect of these differences results in faster aging of the batteries due to overcharge and undercharge.

These charging and discharging imbalances pose an enormous problem for HEVs. Trickle charging is probably the most common method used to correct these imbalances. The battery pack is first given a bulk charge at a high current and then a trickle charge at a low current [2] of 1 or 2 Amps. However, this is time consuming since the duration of the trickle charge is usually a few hours. Another scheme is to implement a battery management system (BMS) which monitors certain parameters, such as the voltages and temperatures of individual batteries, and then takes corrective action whenever an imbalance arises. For many types of batteries, the BMS uses a simple algorithm that monitors the voltage of each battery in the pack, and selects the lowest voltage battery for equalization. Several equalization methods described in [3-10] use this technique which is sometimes called selective equalization, and they work very well for batteries such as lead acid and lithium-ion where there is a linear relationship between voltage and state of charge (SOC).

However, one of the more popular batteries used in today's HEVs is the nickel metal hydride (NiMH),

and these batteries do not have a linear voltage-SOC relationship. In fact, their voltage is almost constant over most of their SOC range during both charge and discharge cycles [11,12]. Because of this relatively flat voltage-SOC profile, in practice it is impractical to detect a weak battery on the basis of its voltage except at very low or high SOC values. In a large series connected battery pack there actually could be several batteries with slightly lower voltages but higher SOC values than others with slightly higher voltages. This effect is aggravated by the fact that batteries with a slightly higher impedance show a higher voltage during charging, and a lower voltage during discharging. Therefore, it is very difficult to identify weaker batteries using the conventional selective equalization technique.

2. The Selective Boost Equalizer

The limitations of previous equalizers indicate that a new type of equalizer is required for NiMH batteries. As noted earlier, this new equalizer detects weak batteries either at very low or extremely high SOC values and schedules them for a boost. Weak NiMH batteries can easily be detected at these SOC values because they tend to go out of voltage balance with respect to the other modules in the pack. This new equalizer uses a special algorithm that routes boost

current to the weaker batteries in a round robin fashion rather than giving each battery a complete boost. Thus, every weak battery gets some boost without excessive delays. The equalizer uses electromechanical relays and a separate boost charger to route the boost current to the weak batteries. A 32-bit Motorola M68376 microcontroller was used to implement the above tasks although a small 8-bit micro probably would have been adequate. The microcontroller controls relay switching in addition to performing various other functions, such as sensing the voltages and temperature of each battery, transmitting data to a personal computer for display, and controlling the charging and discharging process based on the manufacturer's specifications.

The block diagram of the selective boost equalizer is shown in Figure 1. The equalizer was tested on twelve series connected 12V Saft NiMH batteries (B_1 - B_{12}) rated at 93 ampere hours (Ah). The 32-bit microcontroller first detected the weak batteries, i.e., batteries that bring the discharge cycles to a premature end. When a weak battery was detected, a digital signal was sent from the microcontroller I/O port to a control logic interface circuit. This signal represents a number that indicates the battery selected to receive the next boost. The control logic interface circuit decodes the signal and turns on the required relays in a

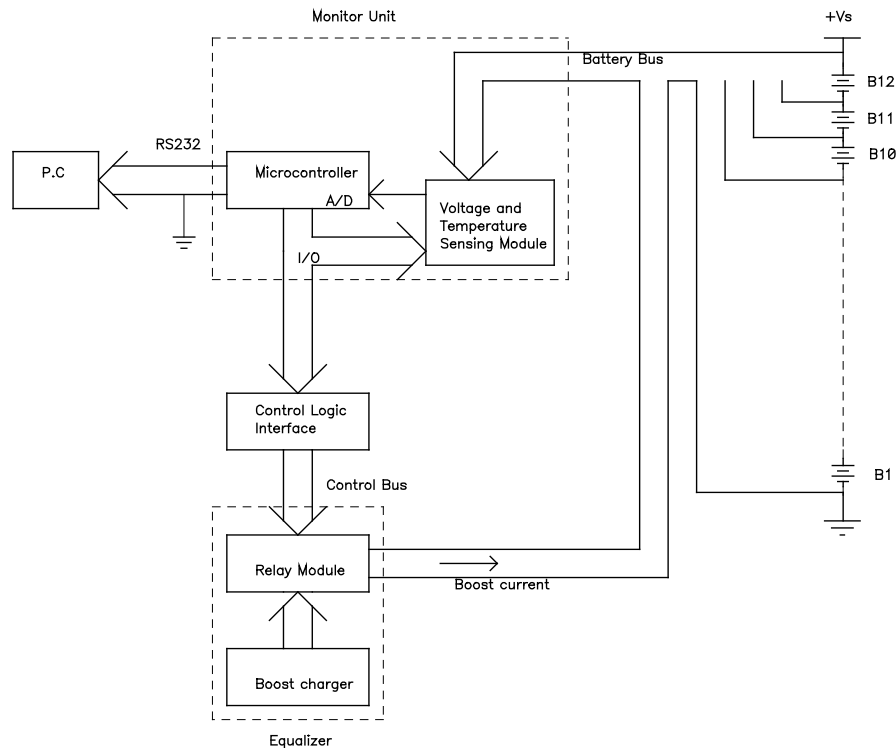


Figure 1. Selective boost equalizer system

relay matrix module to route the boost current from a charger to the selected battery. A personal computer was used to display and store relevant data such as the voltage and temperature of each battery module, charge/discharge current, pack SOC, and so on. Small sealed telecommunication relays were used to achieve high reliability and low cost.

Figure 2 shows the relay matrix module that comprised of seven relays, and Figure 3 shows the

control logic interface module consisting of a set of FETs ($Q_1 - Q_7$), two latches and eight NAND gates. The relays in the relay matrix module are shown in the OFF (Normally Closed) position. PQA0-PQA5 (Port A of microcontroller) were used to output a 6-bit binary number that represents the weak battery that needs a boost. Table 1 shows the binary numbers for each of the twelve batteries. This number indicates the relays to be turned ON in order to route the boost current to the selected weak battery. The 6-bit binary

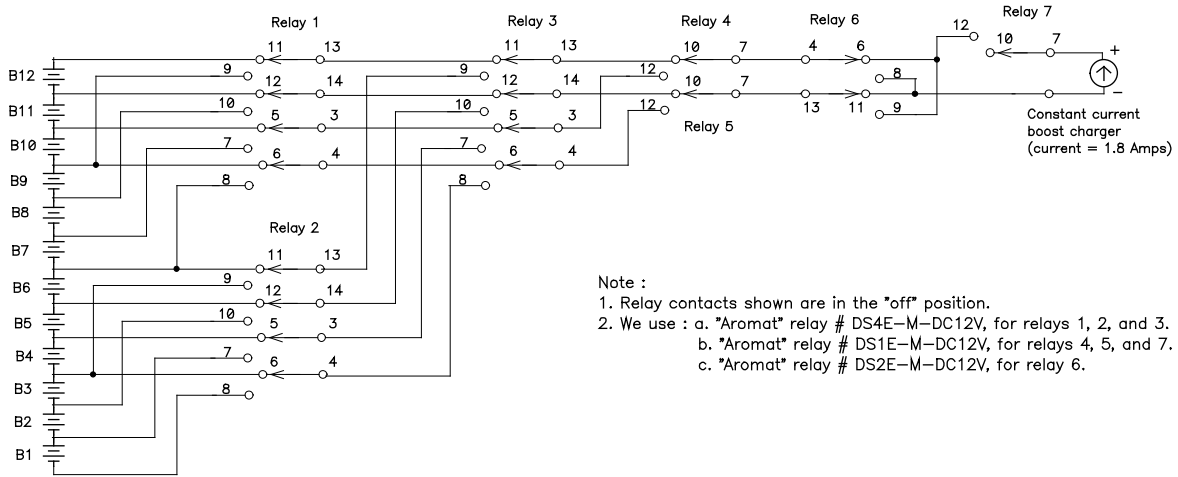


Figure 2. Relay matrix module

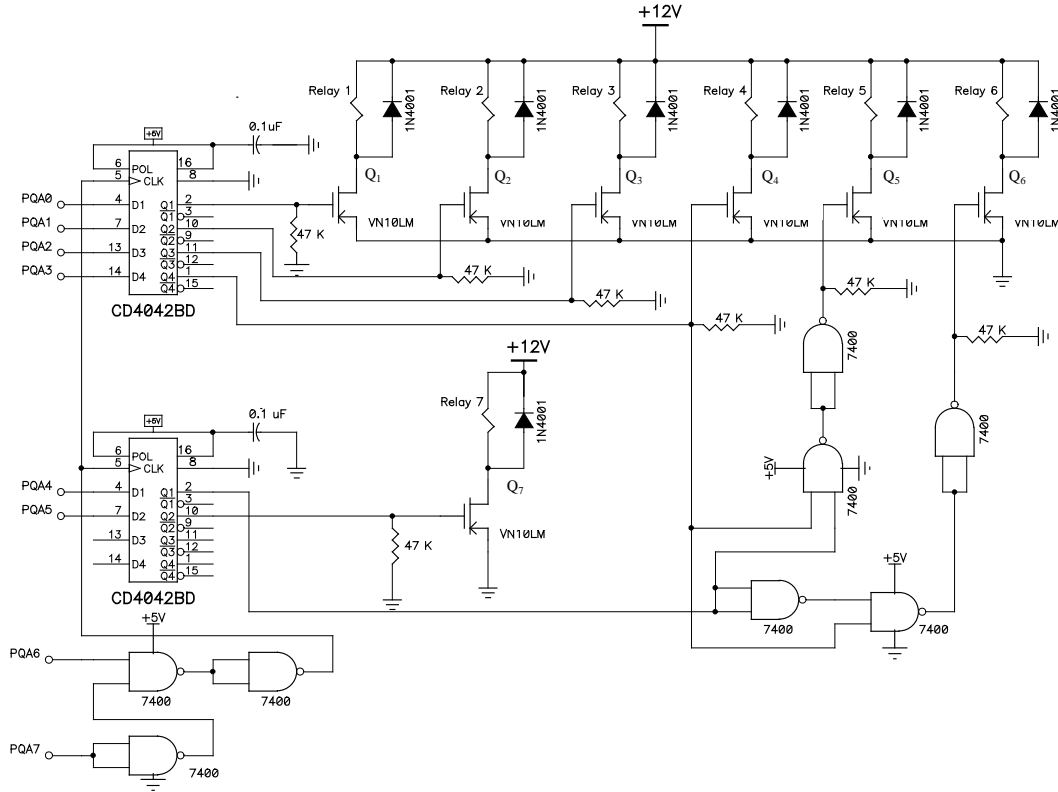


Figure 3. Control logic interface module

Table 1. Logic table for battery selection

| Battery | PQA0 | PQA1 | PQA2 | PQA3 | PQA4 | PQA5 |
|-----------------|------|------|------|------|------|------|
| B ₁₂ | 0 | 0 | 0 | 0 | 0 | 1 |
| B ₁₁ | 0 | 0 | 0 | 1 | 0 | 1 |
| B ₁₀ | 0 | 0 | 0 | 1 | 1 | 1 |
| B ₉ | 1 | 0 | 0 | 0 | 0 | 1 |
| B ₈ | 1 | 0 | 0 | 1 | 0 | 1 |
| B ₇ | 1 | 0 | 0 | 1 | 1 | 1 |
| B ₆ | 0 | 0 | 1 | 0 | 0 | 1 |
| B ₅ | 0 | 0 | 1 | 1 | 0 | 1 |
| B ₄ | 0 | 0 | 1 | 1 | 1 | 1 |
| B ₃ | 0 | 1 | 1 | 0 | 0 | 1 |
| B ₂ | 0 | 1 | 1 | 1 | 0 | 1 |
| B ₁ | 0 | 1 | 1 | 1 | 1 | 1 |

number is latched at the outputs of the two CD4042 latches during a negative clock transition at their CLK inputs. PQA7 and PQA6 (Port A of microcontroller) are used for the data latching operation. This latching operation causes the corresponding FETs in the control logic interface module to turn ON at the same time, thus energizing their corresponding relay coils. For example, if battery B₅ is detected as the weak battery, the 6-bit data output from PQA0-PQA5 of the microcontroller corresponds to 001101₂ (in binary). This data is then latched onto the outputs of the two CD4042 latches causing FETs Q₃, Q₄, Q₆, and Q₇ to turn ON. Therefore, relays 3, 4, 6 and 7 turn ON, and boost current is routed to B₅. Relays 1, 2, 3, 4, and 7 were driven by signals directly from PQA0, PQA1, PQA2, PQA3, and PQA5 respectively. However, relays 5 and 6 were controlled by a set of NAND gates in conjunction with microcontroller signals PQA3 and PQA4. This was done in order to perform the function of reversing the polarity for batteries B₂, B₅, B₈, and B₁₁, so that the positive terminals of these batteries are connected to the positive terminal of the boost charger whenever any one of these is selected for a boost.

3. The Round Robin Algorithm

A special round robin (RR) algorithm was used to control the relays for routing the boost current from the charger to the weak batteries. The program flowchart is shown in Figure 4. Several key parameters of the equalizer are initialized to appropriate values before commencing the equalization process. The equalizer is initially turned OFF, and the boost time for all batteries is set to zero. After initializing the equalizer parameters, the algorithm sits in an infinite loop and looks for the weakest battery in the pack. Weak NiMH batteries can be identified only at the end of their charge and discharge cycles. This is because over most of the SOC range the voltages of all battery

modules are fairly constant. Towards the end of charge and discharge cycles, the weaker batteries tend to start falling out of voltage balance with respect to the other modules in the pack. During the subsequent cycling tests it was observed that the accelerated increase in the voltages of efficient batteries during the end of the charge cycles did not limit the capacity of the pack. It was the rapid voltage drop of weaker batteries during the end of the discharge cycles that limited the capacity. Tests also showed that the threshold value for detecting these weaker batteries during the

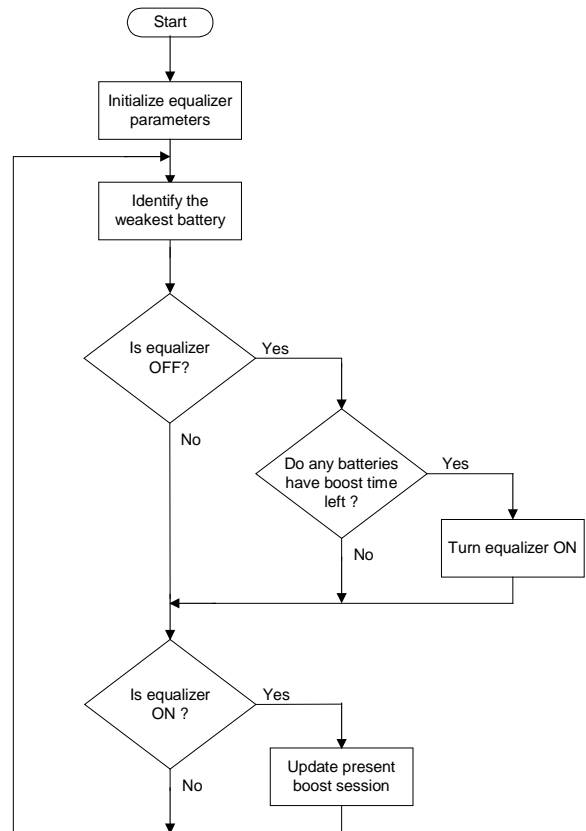


Figure 4. RR algorithm flowchart

discharge cycles was about 0.4V, i.e, the weaker batteries could be identified when their voltages fell 0.4V below the average pack voltage. Therefore, the RR algorithm detects a weak battery when:

$$(V_{avg} - V_{min}) > 0.4V \quad (1),$$

where: V_{avg} = average voltage of batteries, and
 V_{min} = voltage of weakest battery.

After detecting the weak battery, it is scheduled for a boost of 'x' Amps for a total boost time of 'y' minutes. The algorithm then switches the corresponding relays in the relay matrix to route boost current to the detected weak battery, and starts a new boost session. While the weak battery is being boosted, the equalizer continues to search for other weak batteries. If other such batteries are detected during this time, their boost times are also set for 'y' minutes. However, they must wait for the current boost session to end before they receive any boost current.

While current is being supplied to the battery currently under boost, the present boost session is updated. Figure 5 shows the flowchart depicting all the processes that get updated during a boost session. The boost time for the battery currently under boost is decremented, and the time elapsed for the present boost session (on time) is incremented. After 'z' minutes ($z < y$), the algorithm turns the equalizer OFF by turning all the relays in the relay matrix to their OFF positions. It then increments the battery number and checks whether the next battery has any boost time left. For example if battery B_1 was being boosted for 'z' minutes, the algorithm stops boosting B_1 and checks whether B_2 has any boost time left. It keeps incrementing the battery number until it finds a battery with some boost time remaining. If a new weak battery is found, the algorithm turns ON the required relays in the relay matrix and starts boosting this new weak battery. If multiple weak batteries are detected, each battery is boosted only for 'z' minutes instead of its complete quota of 'y' minutes. Therefore, each weak battery does not have to wait too long for its turn for a boost, and the pack is balanced in a more efficient manner. This process continues until each weak battery has no boost time remaining, i.e., each weak battery has received a complete boost = xy Ah.

The RR algorithm, therefore, sits in an infinite loop boosting the detected weak batteries until the boost times for all the batteries are zero. This algorithm also can be used to boost any type of battery by varying the values for boost time, on time, and

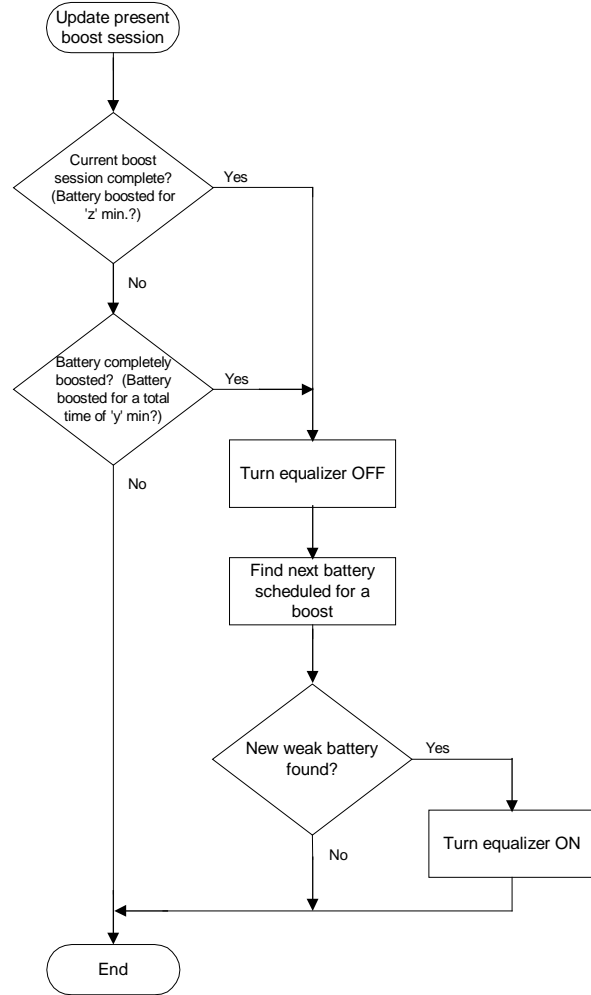


Figure 5. Update present boost session flowchart

boost current. Since the boost current is routed through the relays, its value is limited by their maximum current carrying capability. These experiments used 12V 1.8 Amp telecom type Aromat relays in the relay matrix. Therefore, the boost current was limited to 1.8 Amps, but other relays would allow higher current ratings. The values for boost time and on time should not be too long or the newly detected weak batteries may have to wait for an excessive amount of time before receiving a boost. If the boost is too short it may lead to excessive relay switching, which may decrease the lifetime of the relays.

4. Experimental Results

The technique of boosting the weak batteries individually for a specified period during charging and discharging was first tested using a relatively simple method. During these initial tests, if more than one

weak battery was detected, the first battery was given a complete boost before attending to any of the others.

The 12V NiMH batteries used in these tests had a capacity rating of 93 Ah. About 10 % of the rated Ah, i.e., approximately 9 Ah was removed from one of the batteries (B₇) after the pack had been fully charged. This was done to create an artificial unbalance in the pack so that the equalizing process could be effectively tested. The pack was then cycled, and as expected, at the end of discharge cycle #1, B₇ was observed to be the first to show an abrupt voltage drop. A boost current of 1.8 Amps was then applied to B₇ for about 5 hours to insure that the total Ah added to the weak battery was about 9 Ah. Actually, in practice the proper Ah of boost would be very difficult to determine for this simple algorithm. This is because the optimum Ah boost should be only slightly greater than the Ah of the unbalance which, of course, is unknown. If the boost is much greater than the unbalance, significant energy loss will occur due to overcharging, and if it is too small, balance will not be achieved. The previously described RR algorithm reduces this problem because the boost is applied in several smaller "doses". Overcharging would thus be reduced if the doses were discontinued once the battery was no longer detected as a weak unit.

The discharge Ah of the pack was then recorded at the end of each cycle. During cycle #2, battery B₇ received a complete boost, and therefore it was not detected as the weakest battery. In fact B₈ was detected and scheduled for a boost. The discharge Ah improved to 86.4. During the subsequent discharge cycle, i.e., #3, the Ah improved to 88.31, but B₇ was detected again. In fact, it was observed that as the SOC of the pack approached close to 100 %, either B₇ or B₈ was detected as the weak battery. This may have occurred because B₇ and B₈ had a slightly higher impedance than the other batteries, causing their voltages to be slightly lower during the discharge cycles. The discharge Ah of the pack increased from 81 to 92.81 (SOC \cong 100 %) after six charge and discharge cycles as shown in Figure 6.

Obviously, several different techniques can be used for boosting the batteries. During the above tests using the first equalization method, a complete boost of 9 Ah was given to battery "x" before proceeding to battery "y". This worked fairly well when only one or two batteries were scheduled for a boost (Figure 6), but further tests revealed that if three or more batteries are scheduled, the procedure is less effective. This is because the boost is not uniformly distributed among

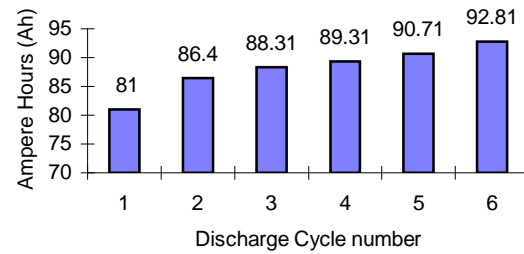


Figure 6. Equalization results without RR algorithm

the defective batteries. This results in some of the batteries getting a complete boost before the commencement of the next discharge cycle, while the rest might not yet receive any boost. This was observed during the tests that used the first equalization method where only one battery was purposely unbalanced. This unbalanced battery, as expected, was detected at the end of discharge cycle #1 and received a complete boost during the subsequent discharge cycle. Although the pack capacity improved, other batteries (especially those with slightly higher impedances) were detected and scheduled for a boost. When one or two such batteries were scheduled for a boost, the discharge capacity of the pack increased gradually until it equaled about 93 Ah (Figure 6). As mentioned before, in most of the tests either B₇ or B₈ were found to be the weak batteries as the SOC approached 100 %. The Ah obtained during the subsequent discharge cycles remained close to 93 Ah. However, in one test where B₃ was purposely unbalanced, slightly different results were obtained. In this test, three weak batteries were detected when the SOC equaled 100 %. This caused the Ah in the following discharge cycle to be much lower.

Figure 7 shows the results obtained where 9 Ah was purposely taken out from one battery (B₃) to create an artificial unbalance in the pack. As expected, battery B₃ was detected for a boost at the end of discharge cycle #1. During cycle #2, battery B₃ got a complete boost. Therefore, at the end of discharge cycle #2, B₃ was not detected to be the weakest battery. In fact two other batteries, B₇ and B₈, were detected and were scheduled for a boost, and the Ah recorded at the end of discharge cycle #2 improved to 86.6. During the subsequent discharge cycle, i.e. #3, the Ah improved to 93.11 (SOC \cong 100 %), but the microcontroller detected three weak batteries viz. B₇, B₉, and B₁₀. Battery B₇ was scheduled for a boost again because it did not receive a sufficient amount of boost during the previous cycle (discharge cycle #3).

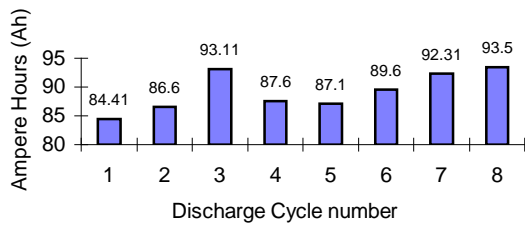


Figure 7. Equalization results without RR algorithm

Although the pack SOC was approximately equal to 100 %, it was decided to observe the effect of these three weak batteries on the discharge Ah by continuing the pack cycling. The algorithm first started boosting B₇ during cycle #4. However, it failed to completely boost battery B₉ and B₁₀ before the commencement of cycle #5. As a result, battery B₉ was detected for a boost again at the end of discharge cycle #4, and the capacity of the pack decreased to 87.6 ampere hour. With further cycling the capacity improved gradually from 87.6 Ah to 93.5 Ah (SOC \cong 100 %) because in each of the subsequent cycles viz. #5, #6, #7, and #8, either battery B₇ or B₈ was detected for a boost, and it was boosted completely before the start of the following cycle.

To counter the above problem, it was decided to boost the defective batteries using the RR algorithm. Three batteries (B₅, B₉ and B₁₀) were purposely unbalanced (9 Ah was taken from each of them) in order to test the algorithm. During discharge cycle #1, the algorithm detected the above three batteries and scheduled them for a boost. The boost current was then routed through the relays in accordance with the RR algorithm guidelines described earlier. The boost current was set to 1.8 Amps and the boost time for each detected battery was set to 5 hours so that the total Ah added to each battery equaled 9 Ah. The RR algorithm boosted the detected batteries in small "doses" of 54 minutes each, until the boost times for all batteries equaled zero. The period of each dose was selected to be 54 minutes so that about 1.6 Ah (18 % of the total 9 Ah unbalance) was added during every dose. The capacity increased from 74.8 Ah to 94.6 Ah (slightly above the 100 % SOC rating) after six charge and discharge cycles [12] as shown in Figure 8.

The total number of cycles required for the artificially unbalanced pack to be re-balanced were thus significantly reduced using the RR algorithm. This occurred even though the RR algorithm test had three purposely unbalanced batteries, whereas the previous test only had one. Additional testing might

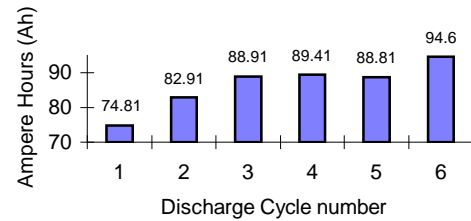


Figure 8. Equalization results with RR algorithm

indicate better values for the RR algorithm's boost time, "dose" time, and current, and this remains a topic for further study.

5. Conclusions

The new RR algorithm proved to be very effective for equalizing the twelve series connected NiMH batteries. The technique used for equalization is a universal one and is not restricted to one particular type of battery. This is because the equalization principle does not follow the traditional method of picking the cell with lowest voltage for equalization, but instead looks for batteries that initiate the end of the charge and discharge cycles. The time required to equalize the pack was reduced considerably by using the RR algorithm. The optimum amount of boost current and time will differ from battery to battery, and this depends on a variety of factors such as the individual battery characteristics and SOC ratings.

The equalizer is compact and makes use of inexpensive components. The lifetime of relays used was rated at a minimum of 5×10^5 switching operations at a current of 2 Amp DC [13]. Based on the much lower number of expected switching operations, this indicates the equalizer should easily outlast the life of an HEV.

6. Acknowledgment

This research was supported jointly by grants from the US Department of Energy National Renewable Energy Laboratory (grant no. ACI-9-29118-01) and DaimlerChrysler, AG. The authors also would like to acknowledge the advice and assistance provided by Dr. Cyrus Ashtiani and Mr. Giovanni Bolgiani from DaimlerChrysler.

7. References

- [1] D.Linden, "Handbook of Batteries and Fuel Cells", McGraw-Hill, 1995.

- [2] M.Fukino, N.Irie, and H.Ito, "Development of an Electric Concept Vehicle with a Super Quick Charging System", SAE Paper No. 920442, 1992.
- [3] M.H.Moody, "A High Reliability Battery Management System", J.Power Sources, Vol.18, pp.223-231, 1986.
- [4] S.T.Hung, D.C.Hopkins and C.R.Mosling, "Extension of Battery Life via Charge Equalization Control", IEEE Transactions on Industrial Electronics, Vol.40, No.1, pp.96-104, February 1993.
- [5] R.Park, "Method of Equalizing the Voltages of Individual Cells of Storage Batteries", U.S.Patent 4331991, May 25, 1982.
- [6] N.H.Kutkut, D.M.Diwan, and D.W.Novotny, "Charge Equalization for Series Connected Battery Strings", IEEE Transactions, Vol.31, No.3, pp.562-568, May/June 1995.
- [7] N.H.Kutkut, D.M.Diwan, H.Wiegman, and D.W.Novotny, "Design Considerations for Charge Equalization of an Electric Vehicle Battery System", IEEE 1995 APEC Proceedings, pp.96-103, March 1995.
- [8] Z.Ye, "An Electronic Equalizer for Series Connected Batteries", Ph.D Dissertation, The University of Toledo, December 1995.
- [9] T.Gottwald, Z.Ye, and T.Stuart, "An High Frequency Electronic Equalizer for EV and HEV Batteries", Future Transportation Technology Conference (paper number 972636), San Diego, CA, August 1997.
- [10] M.Tang and T.Stuart, "Selective Buck-Boost Equalizer for Series Battery Packs", IEEE Transactions on Aerospace and Electronic Systems, Vol.36, No.1, pp. 201-211, January 2000.
- [11] "Nickel-Metal Hydride Modules for Electric Vehicles", Saft Inc., 2004, http://www.saftbatteries.com/130-Catalogue/PDF/HE_NIMH.pdf.
- [12] A.Hande, "A Selective Boost Equalizer for NiMH Batteries", M.S. Thesis, The University of Toledo, May 2000.
- [13] "Highly Sensitive 1500V FCC Surge Withstanding Miniature Relays", Aromat Corporation, 2000, <http://www.aromat.com/pcsd/ds.pdf>.